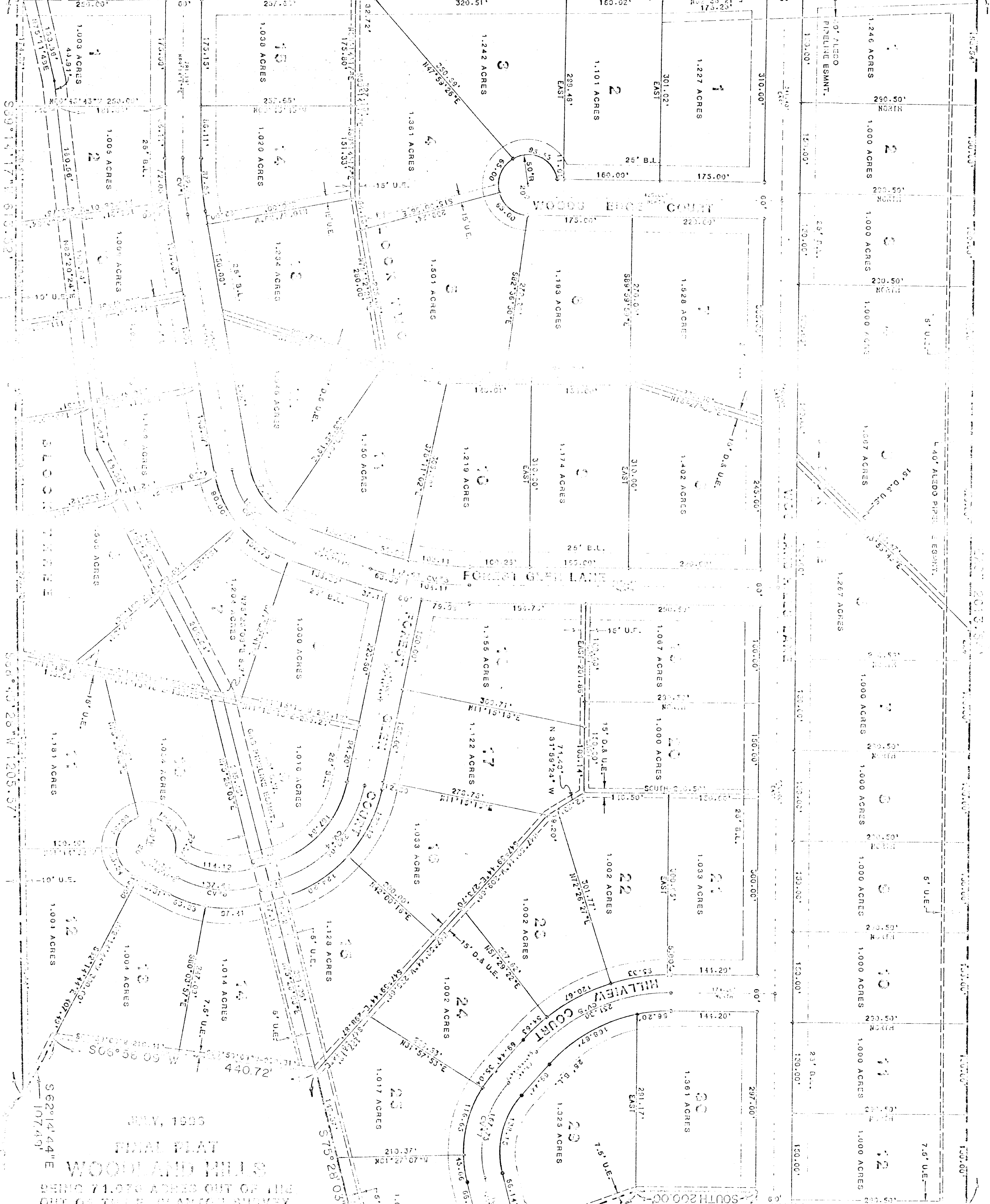


COUNTY ROAD #4016

N00°54'22"W 309.18' N00°15'45"E 304.96' N05°54'43"E 276.13' N02°40'04"W 547.45'

N.O.W. FOR DEDICATION



JULY, 1988

FINAL PLAT

WOODLAND HILLS

BEING 71.078 ACRES OUT OF THE
OUT OF THE B. PLANTER SURVEY,
ABSTRACT #37 PARKER COUNTY, TEXAS

OWNER:

WOODLAND HILLS DEVELOPMENT CO.

ENGINEER:

VESTKA ENGINEERING CONSULTANTS, INC.
202 East Border, Suite 300
Arlington, Texas 76010

Phone (817) 469-1071



County Clerk, Parker County, Texas

SEP 09 1988

Scale: 1" = 100'

3712 OF 1988 COUNTY CLERK
I hereby certify that this instrument was filed
in the file and first stamped herein by me and
is a true and correct copy of the original as the
same appears in the county and state records.
Recorded in the County Clerk's Office as shown here
on by me.