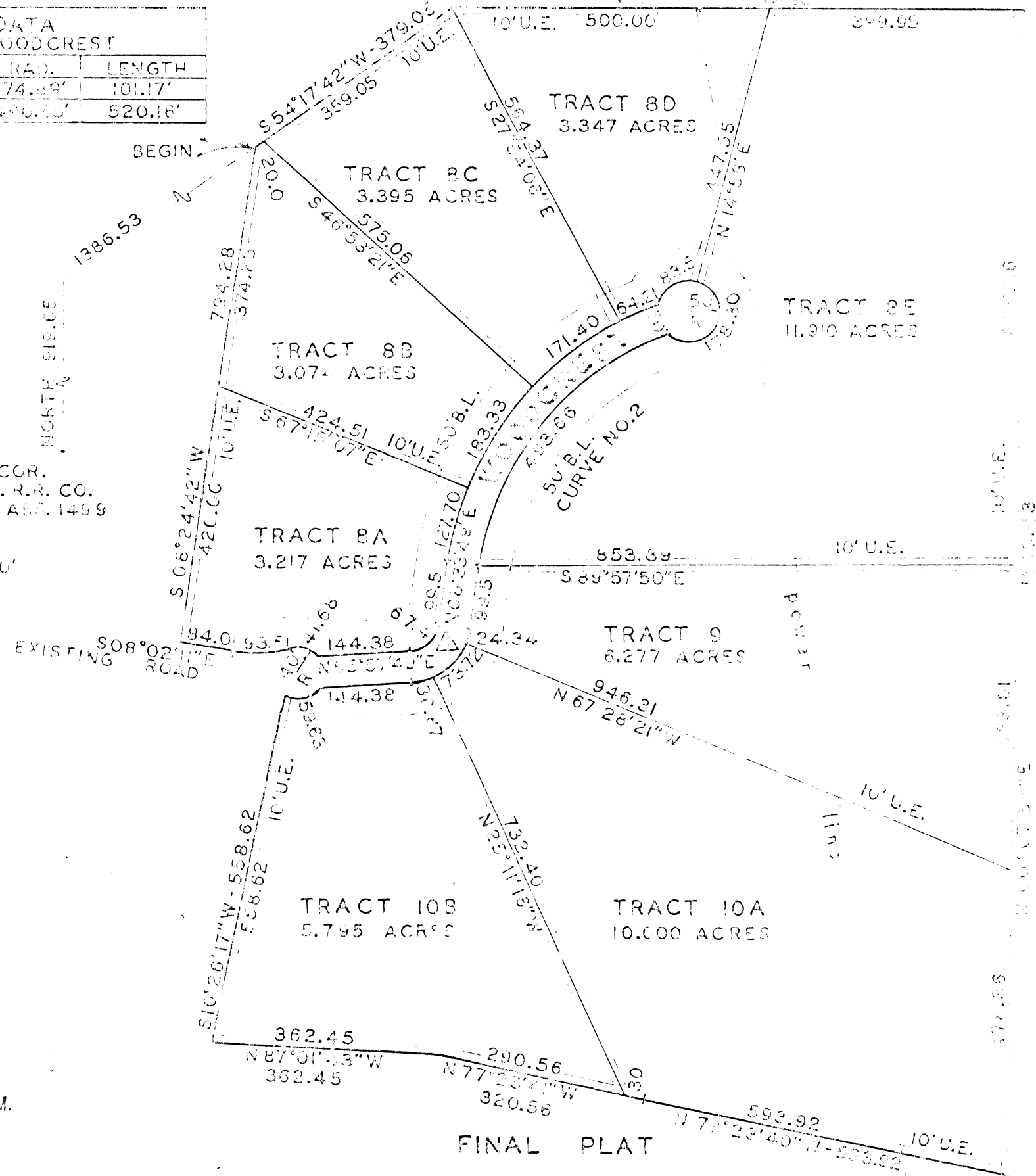


CURVE DATA CENTER LINE OF WOODCREST				
NUMBER	Δ	TAN. BEG.	BEG. LEN.	LENGTH
1	77°24'	60.00'	74.89'	101.17'
2	60°55'	387.50'	486.45'	520.16'

SCALE 1" = 200'

S.W. COR.
T. & P. R.R. CO.
SUN. ABS. 1499



70086

RECEIVED AND FILED
FOR RECORD
At 11:15 O'Clock A.M.
MAR 13 1978

CARRIE REED, Co. Clerk
PARKER COUNTY, TEXAS
By *J. M. Smith* Deputy
510.00PD

FINAL PLAT
WOODCREST SUBDIVISION

48.010 ACRES IN THE T. & P. R.R.
COMPANY SURVEY 1, BLOCK 2, ABS. 1499,
PARKER COUNTY, TEXAS
MARCH 1978

OWNER-DEVELOPER — R.L. BARDEE, TRUSTEE

VESELKA ENGINEERING
CONSULTANTS

ARLINGTON
H.J. VESELKA, P.E.
478-2670

WEATHERFORD
A.W. VESELKA, P.E.
594-1925

STATE OF TEXAS
COUNTY OF PARKER
I hereby certify that this instrument was
filed on the date and time stamped here-
on by me and was duly recorded on the
13 day of MARCH, A.D. 1978, in
Vol. 366A page 22, of the PLAT
records of Parker County, Texas.

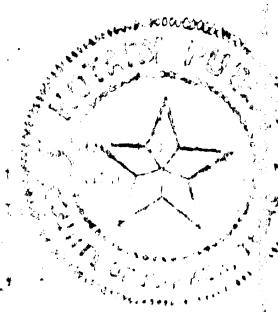


Carrie Reed

County Clerk, Parker
County, Texas

Deputy Clerk
W. J. Veselka
W. J. Veselka

13th March
R.L. Bardee, Trustee



13th March
Carrie Reed

Carrie Reed
Carrie Reed