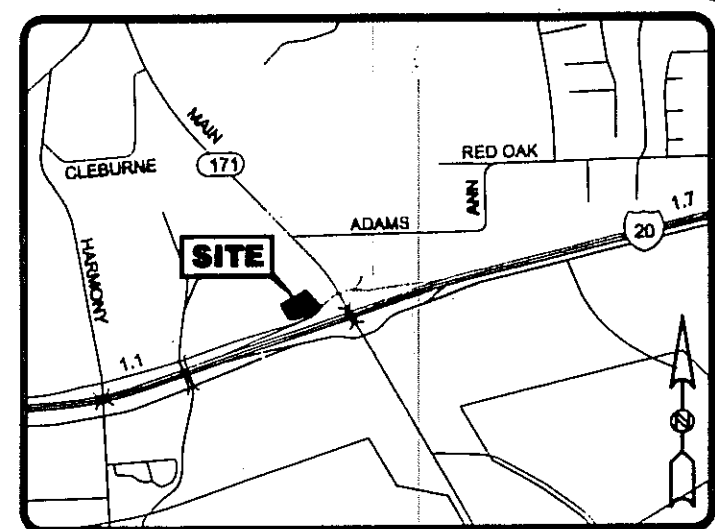


LEGEND

- 5/8" I.R.F.C. 5/8" IRON ROD FOUND WITH PLASTIC CAP STAMPED "DUNAWAY & ASSOC."
- 5/8" I.R.S. 5/8" IRON ROD SET WITH PLASTIC CAP STAMPED "R.P.L.S. 5199"
- D.R.P.C.T. DEED RECORDS, PARKER COUNTY, TEXAS
- I.R.F. IRON ROD FOUND
- T.C.M.F. TxDOT CONCRETE MONUMENT FOUND
- M.R.P.C.T. MAP RECORDS, PARKER COUNTY, TEXAS
- P.O.B. POINT OF BEGINNING
- R.O.W. RIGHT-OF-WAY



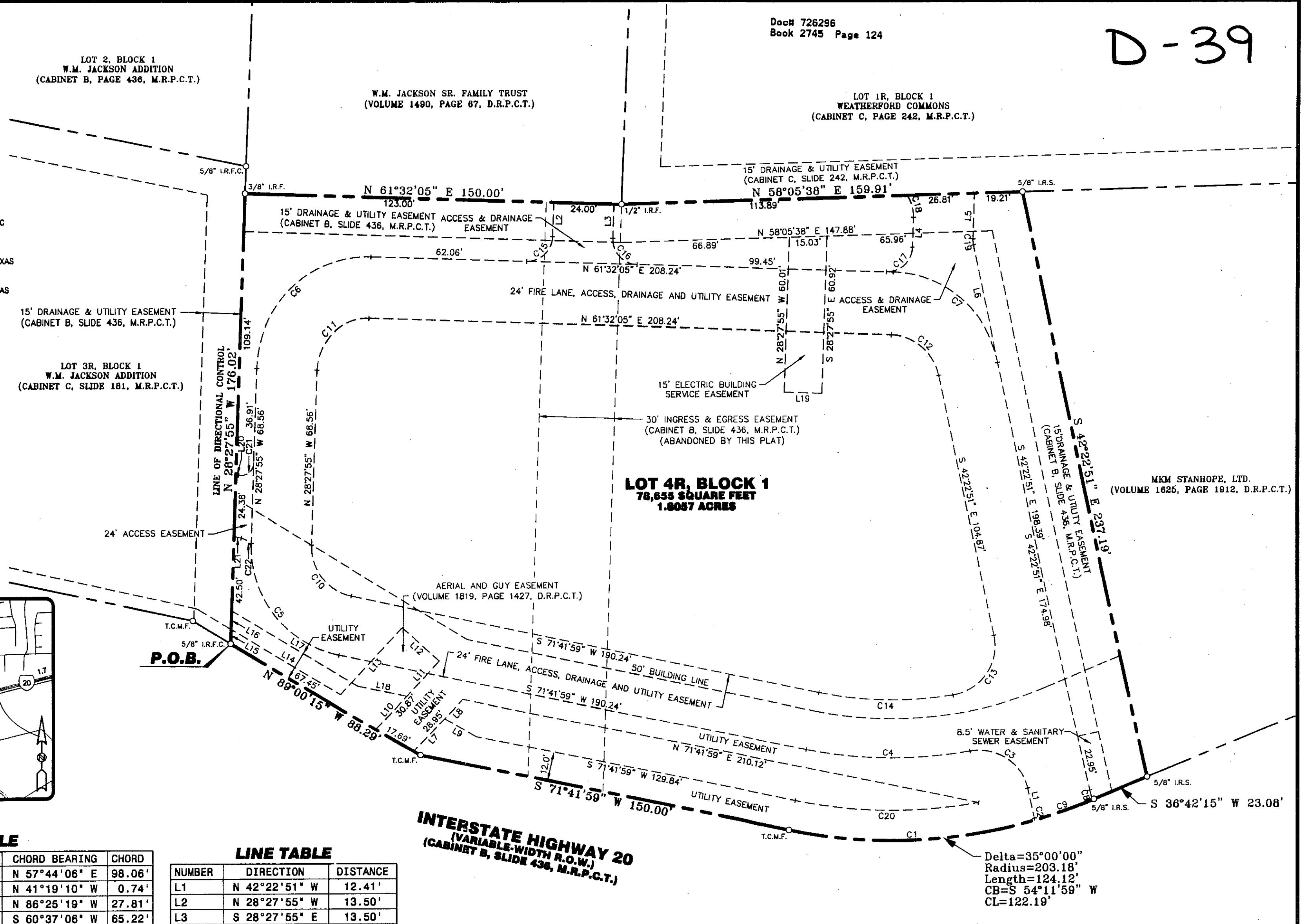
LOCATION MAP
SCALE: 1"=2000'

CURVE TABLE

NUMBER	DELTA	RADIUS	LENGTH	CHORD BEARING	CHORD
C1	27°55'44"	203.18'	99.04'	N 57°44'06" E	98.06'
C2	02°07'23"	20.00'	0.74'	N 41°19'10" W	0.74'
C3	88°04'54"	20.00'	30.75'	N 86°25'19" W	27.81'
C4	22°09'44"	169.68'	65.63'	S 60°37'06" W	65.22'
C5	79°50'06"	44.00'	61.31'	N 68°22'58" W	56.47'
C6	90°00'00"	44.00'	69.12'	N 16°32'05" E	62.23'
C7	76°05'04"	44.00'	58.43'	S 80°25'23" E	54.23'
C8	11°24'54"	20.00'	3.98'	S 48°05'19" E	3.98'
C9	06°56'39"	203.18'	24.63'	S 40°17'55" W	24.61'
C10	79°50'06"	20.00'	27.87'	N 68°22'58" W	25.67'
C11	90°00'00"	20.00'	31.42'	N 16°32'05" E	28.28'
C12	76°05'04"	20.00'	26.56'	S 80°25'23" E	24.65'
C13	92°53'45"	20.00'	32.43'	S 04°04'01" W	28.99'
C14	21°11'05"	145.68'	53.86'	S 61°06'26" W	53.56'
C15	90°00'00"	10.00'	15.71'	N 16°32'05" E	14.14'
C16	90°00'00"	10.00'	15.71'	S 73°27'55" E	14.14'
C17	90°00'00"	10.00'	15.71'	N 16°32'05" E	14.14'
C18	35°19'56"	15.00'	9.25'	N 46°07'53" W	9.10'
C19	13°54'56"	10.00'	2.43'	S 35°25'23" E	2.42'
C20	22°03'47"	191.18'	73.62'	S 60°40'05" W	73.16'
C21	100°09'50"	5.00'	8.74'	N 21°37'00" E	7.67'
C22	76°26'29"	5.00'	6.67'	N 70°04'51" W	6.19'

LINE TABLE

NUMBER	DIRECTION	DISTANCE
L1	N 42°22'51" W	12.41'
L2	N 28°27'55" W	13.50'
L3	S 28°27'55" E	13.50'
L4	N 28°27'55" W	11.66'
L5	S 28°27'55" E	17.96'
L6	S 42°22'51" E	46.36'
L7	N 12°07'49" E	18.33'
L8	N 12°07'49" E	10.62'
L9	N 89°00'15" W	14.67'
L10	N 12°07'49" E	18.39'
L11	N 12°07'49" E	19.19'
L12	N 77°52'11" W	20.00'
L13	S 12°07'49" W	36.42'
L14	S 89°00'15" E	50.88'
L15	S 28°27'55" E	5.74'
L16	N 28°27'55" W	7.46'
L17	S 89°00'16" E	58.79'
L18	N 71°41'59" E	19.83'
L19	S 61°32'05" W	15.00'
L20	N 71°41'55" E	1.08'
L21	S 71°41'55" W	2.96'



INTERSTATE HIGHWAY 20
(VARIABLE-WIDTH R.O.W.)
(CABINET B, SLIDE 436, M.R.P.C.T.)

Delta=35°00'00"
Radius=203.18'
Length=124.12'
CB=S 54°11'59" W
CL=122.19'

THE PURPOSE OF THIS AMENDING PLAT IS TO ABANDON AN EXISTING INGRESS & EGRESS EASEMENT AND PROVIDE NEW EASEMENTS NECESSARY FOR DEVELOPMENT OF THE LOT.

AMENDING PLAT
W.M. JACKSON ADDITION, BLOCK 1, LOT 4R
BEING A REPLAT OF LOT 4, BLOCK 1, W.M. JACKSON ADDITION
(CABINET B, SLIDE 436, M.R.P.C.T.)

ACCT. NO.: 13965
SCH. DIST.: WE
CITY: WE
MAP NO.: H-16

out of
A.M. KROUSE SURVEY, ABSTRACT No. 785
CITY OF WEATHERFORD, PARKER COUNTY, TEXAS

OWNER:
WEST WEATHERFORD, LTD.
2630 West Freeway
Suite 220
Fort Worth, Texas 76102
(817) 335-3223

PROJECT INFORMATION
Date of Survey: 04/12/2004
Date of Drawing: 09/17/2009
Job Number: 04101113
Drawn By: M.M.D.
File: Replat.Dwg
SHEET 1 OF 2



811 E. Plano Parkway
Suite 117
Plano, Texas 75074
(972) 424-7002 Voice
(972) 633-1702 Fax
WWW.SurveyConsultantsInc.Com