

STATE OF TEXAS  
 COUNTY OF PARKER  
 I hereby certify that this instrument was  
 filed on the date and time stamped here-  
 on by me and was duly recorded on the  
 31 day of Oct A.D. 1978, in  
 Vol. 261, Page 32, of the Plat  
 records of Parker County, Texas.

83482  
 RECEIVED AND FILED  
 FOR RECORD  
 At 3:15 O'Clock P.M.  
 OCT 31 1978  
 CARRIE REED, Co. Clerk  
 PARKER COUNTY, TEXAS  
 By [Signature] Deputy

SCALE: 1" = 200'

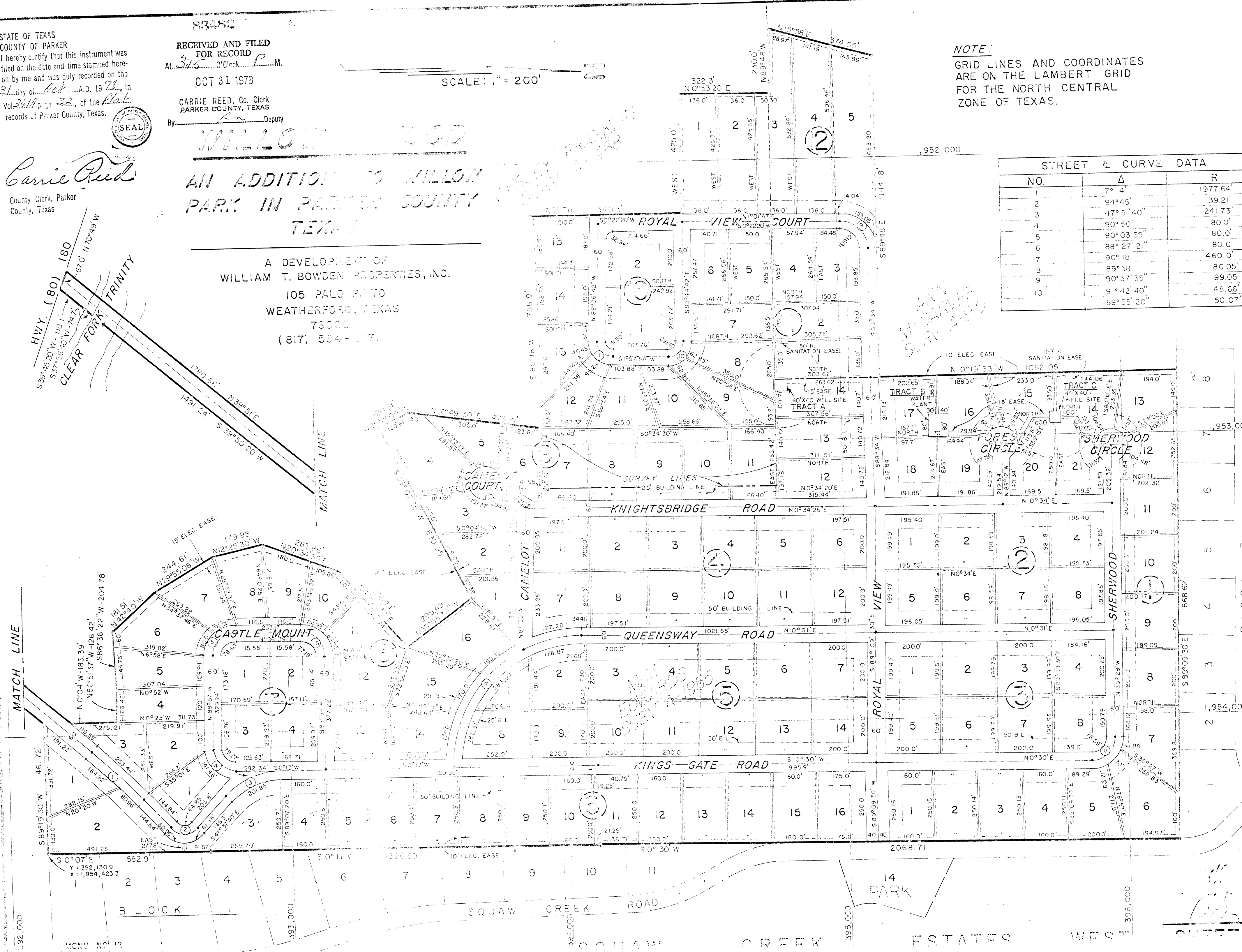
NOTE:  
 GRID LINES AND COORDINATES  
 ARE ON THE LAMBERT GRID  
 FOR THE NORTH CENTRAL  
 ZONE OF TEXAS.

Carrie Reed  
 County Clerk, Parker  
 County, Texas

**WILLOW WOOD**  
 AN ADDITION TO WILLOW  
 PARK IN PARKER COUNTY  
 TEXAS

A DEVELOPMENT OF  
 WILLIAM T. BOWDEN PROPERTIES, INC.  
 105 PALO ALTO  
 WEATHERFORD, TEXAS  
 76088  
 (817) 594-1277

STREET & CURVE DATA		
NO.	Δ	R
1	7° 14'	1977.64
2	94° 45'	39.21
3	47° 51' 40"	241.73'
4	90° 50'	80.0'
5	90° 03' 39"	80.0'
6	88° 27' 21"	80.0'
7	90° 18'	460.0'
8	89° 58'	80.05'
9	90° 37' 35"	99.05'
10	91° 42' 40"	48.66'
11	89° 55' 20"	50.07'



ANN  
 WILLIAMS  
 SURVEY

Handwritten initials and notes at the bottom right corner of the page.