

B-788

LOT	SQUARE FOOTAGE	ACRES
BLOCK F		
8	15503	0.356
9	17441	0.400
10	19336	0.444
11	10491	0.241
12	9819	0.225
BLOCK G		
7	18004	0.413
8	8717	0.200
9	8990	0.207
10	8400	0.193
11	15907	0.365
12	24218	0.556
BLOCK H		
7	16977	0.390
8	14228	0.327
9	17053	0.254
10	10282	0.236
11	10509	0.241
12	10500	0.241
13	10500	0.241
14	10500	0.241
15	12679	0.291
16	15073	0.346
17	8400	0.193
18	9600	0.220
19	10435	0.240
20	13659	0.314
21	10008	0.230
22	8576	0.197
23	16144	0.371
24	13977	0.321
25	8610	0.198
26	10465	0.240
27	12774	0.293
28	12683	0.291
29	9451	0.217
30	8738	0.201
31	8538	0.196
32	10684	0.245
33	9296	0.213
34	8770	0.201
35	12041	0.276
BLOCK I		
1	10574	0.243
2	9045	0.208
3	9600	0.220
4	9000	0.207
5	9360	0.215
6	8400	0.193
7	12205	0.280
8	11127	0.255
9	9530	0.219
10	8400	0.193
11	8400	0.193
12	16784	0.385

Doc 00476373 Bk 2095 Vol 1918 Pg

FILED AND RECORDED OFFICIAL PUBLIC RECORDS On Apr 09, 2003 at 02:10P

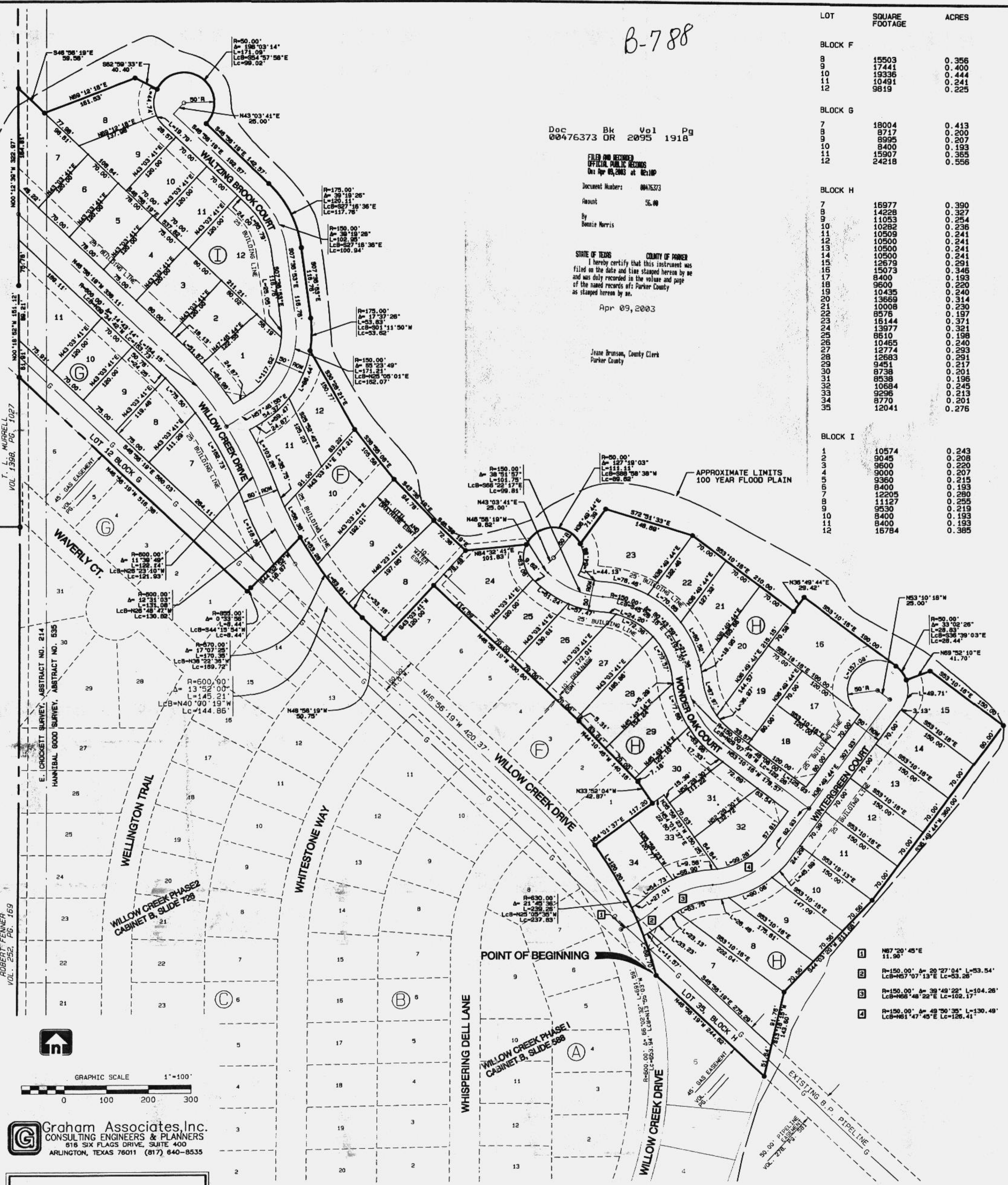
Document Number: 00476373 Amount: \$6.00

By Bonnie Morris

STATE OF TEXAS COUNTY OF PARKER I hereby certify that this instrument was filed on the date and time stamped herein by me and was duly recorded in the volume and page of the named records of Parker County as stamped herein by me.

Apr 09, 2003

Jeanne Brunson, County Clerk Parker County



- 1 N67°20'45"E 11.96'
- 2 R=150.00' Δ=20°27'04" L=53.54' LCB=N57°07'13"E Lc=53.28'
- 3 R=150.00' Δ=38°48'22" L=104.26' LCB=N56°48'22"E Lc=102.17'
- 4 R=150.00' Δ=49°50'35" L=130.49' LCB=N61°47'45"E Lc=126.41'

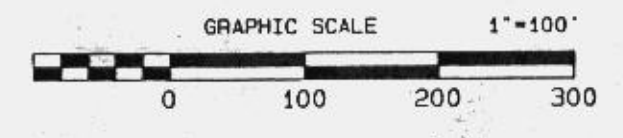
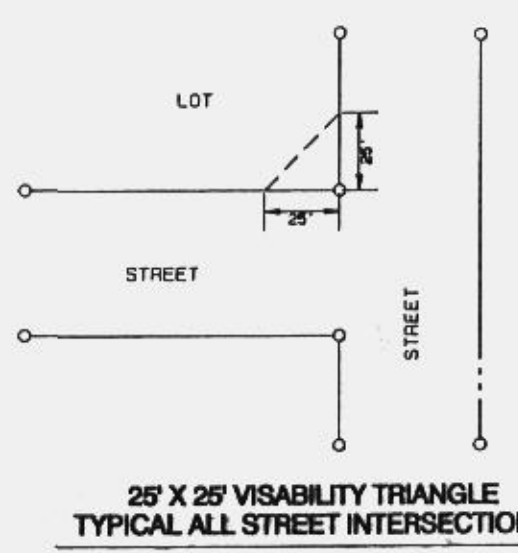
ACCT. NO: 19506
 SCH. DIST: WE
 CITY: WE
 MAP NO.: I-15

FINAL PLAT
WILLOW CREEK PHASE 4

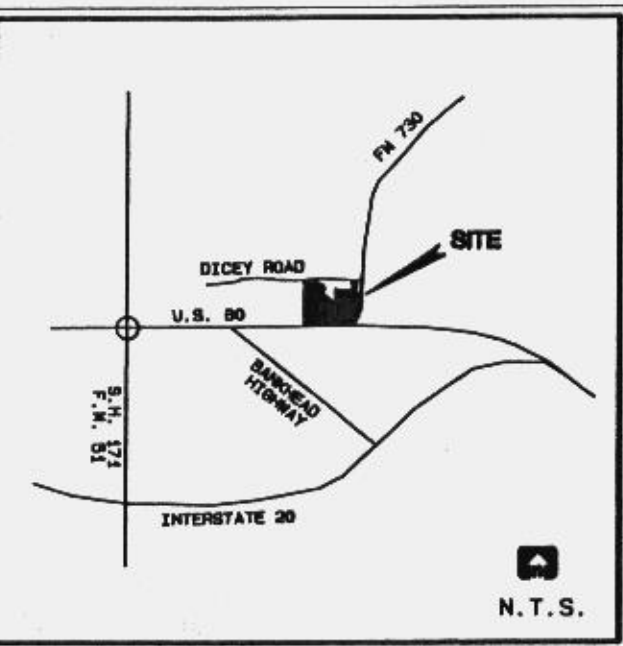
Hannibal Good Survey, Abstract No.535
 E. Crockett Survey, Abstract No. 214
 City of Weatherford
 Parker County, Texas



NOTE: BASIS OF BEARING FOR THIS PLAT IS THE CITY OF WEATHERFORD GIS COORDINATE SYSTEM



Graham Associates, Inc.
 CONSULTING ENGINEERS & PLANNERS
 816 SIX FLAGS DRIVE, SUITE 400
 ARLINGTON, TEXAS 76011 (817) 640-8535



N. T. S.