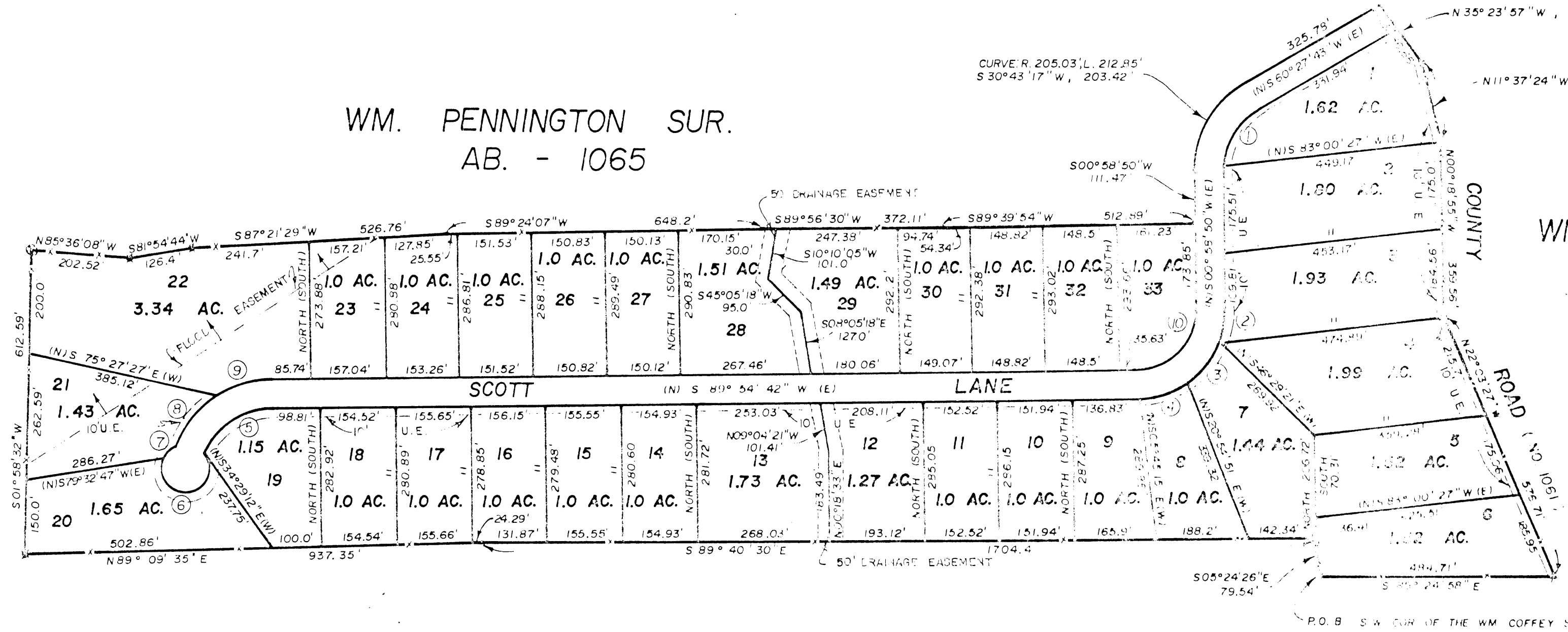


CURVE DATA				
Nº	Radius	Length	Chord Bearing	Length
1	145.03'	150.56'	S30°43'17"W	143.89'
2	182.83'	80.27'	S13°33'32"W	79.63'
3	182.83'	102.21'	S42°09'09"W	100.88'
4	182.83'	101.29'	S74°02'23"W	100.0'
5	171.23'	148.95'	S56°58'38"W	161.96'
6	50.0'	218.86'	S88°57'08"W	81.51'
7	50.0'	30.47'	N51°48'32"E	30.0'
8	208.95'	124.12'	N38°51'40"E	122.31'
9	208.95'	124.11'	N72°53'43"E	122.29'
10	122.83'	190.64'	N45°26'46"E	172.07'

WM. PENNINGTON SUR.  
AB. - 1065

WM. COFFEY SUR.  
AB. - 265



T. & P. R.R. CO. SUR. SEC. - 27  
AB. - 1423

WHISPERING OAKS  
BEING A PART OF THE WM. PENNINGTON SUR. AB. - 1065 AND THE WM. COFFEY SUR. AB. - 265.  
PARKER COUNTY, TEXAS

RECEIVED AND FILED FOR RECORD  
At 3:36 P.M. Clock  
OCT 08 1984  
CARRIE REED, Co. Clerk  
PARKER COUNTY, TEXAS  
By \_\_\_\_\_ Deputy

STATE OF TEXAS COUNTY OF PARKER  
I hereby certify that this instrument was filed on the date and time stamped hereon by me and was duly recorded in the volume and page of the Public Records of Parker County as stamped hereon by me.  
RECORDED OCT 08 1984  
Carrie Reed  
County Clerk, Parker County, Tex.

SCALE 1" = 200'  
LEGEND  
O IRON PIPE  
● STEEL ROD  
⊠ FENCE CORNER  
\* FENCE

HUGHES AND ASSOCIATES  
LAND SURVEYING  
CIVIL ENGINEERING  
LAND PLANNING  
1111 E. COLUMBIA, SUITE E WEATHERFORD, TEXAS  
OFFICE 594-9374 OR 441-7519 HOME 594-2158

I certify that this map was prepared from field notes of an actual survey made by me or under my supervision and to the best of my knowledge and belief represents said survey.  
Date 8/84 No. 11,923-A

All record page