

Whereas, JIMMY LYNN and MILTON DIMOCK, the sole owners of a tract of land situated in the John McLerran Survey, Abstract No. 912, Parker County, Texas, according to the deed recorded in vol. 1100, pg. 904, Deed Records, Parker County, Texas and more particularly described as follows:

Being a tract of land out of the John McLerran Survey, Abstract No. 912, Parker County, Texas, and being more fully described by notes and bounds as follows:

Beginning at an iron pipe in the south boundary line of F.M. Hwy. 2257, said point being 1475.08 feet south of the north east corner of the John McLerran Survey;

- Thence S.00°11'08"E., 476.23 feet to a point for a corner;
- Thence S.01°4'09"W., 657.23 feet to a point for a corner;
- Thence N.89°11'35"W., 415.0 feet to a point for a corner;
- Thence S.12°54'W., 76.34 feet to a point for a corner;
- Thence S.89°41'05"W., 1062.94 feet to a point for a corner;
- Thence N.08°45'E., 833.73 feet to a point for a corner;
- Thence S.80°30'11"W., 35.08 feet to a point for a corner;
- Thence S.82°33'W., 513.53 feet to a point for a corner;
- Thence N.00°43'07"W., 407.03 feet to a point in the south line of F.M. Hwy. 2257 to a point for a corner;
- Thence S.82°30'E., 702.03 feet along the south line of F.M. Hwy. 2257 to a point for a corner;
- Thence East, 1004.25 feet along the south line of F.M. Hwy. 2257 to a point for a corner;
- Thence N.88°34'E., 225.46 feet to the point of beginning.

NOW, THEREFORE, KNOW ALL MEN BY THESE PRESENTS:

That, JIMMY LYNN and MILTON DIMOCK, do hereby adopt this plat designating the hereinabove described real property as WESTWOOD, an addition to Parker County, Texas, and they do hereby dedicate to the public use forever the streets and/or easements shown thereon.

WITNESS MY HAND AT Parker County, Texas this the 9 day of Dec 1901

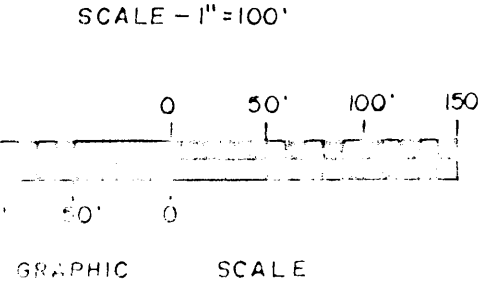
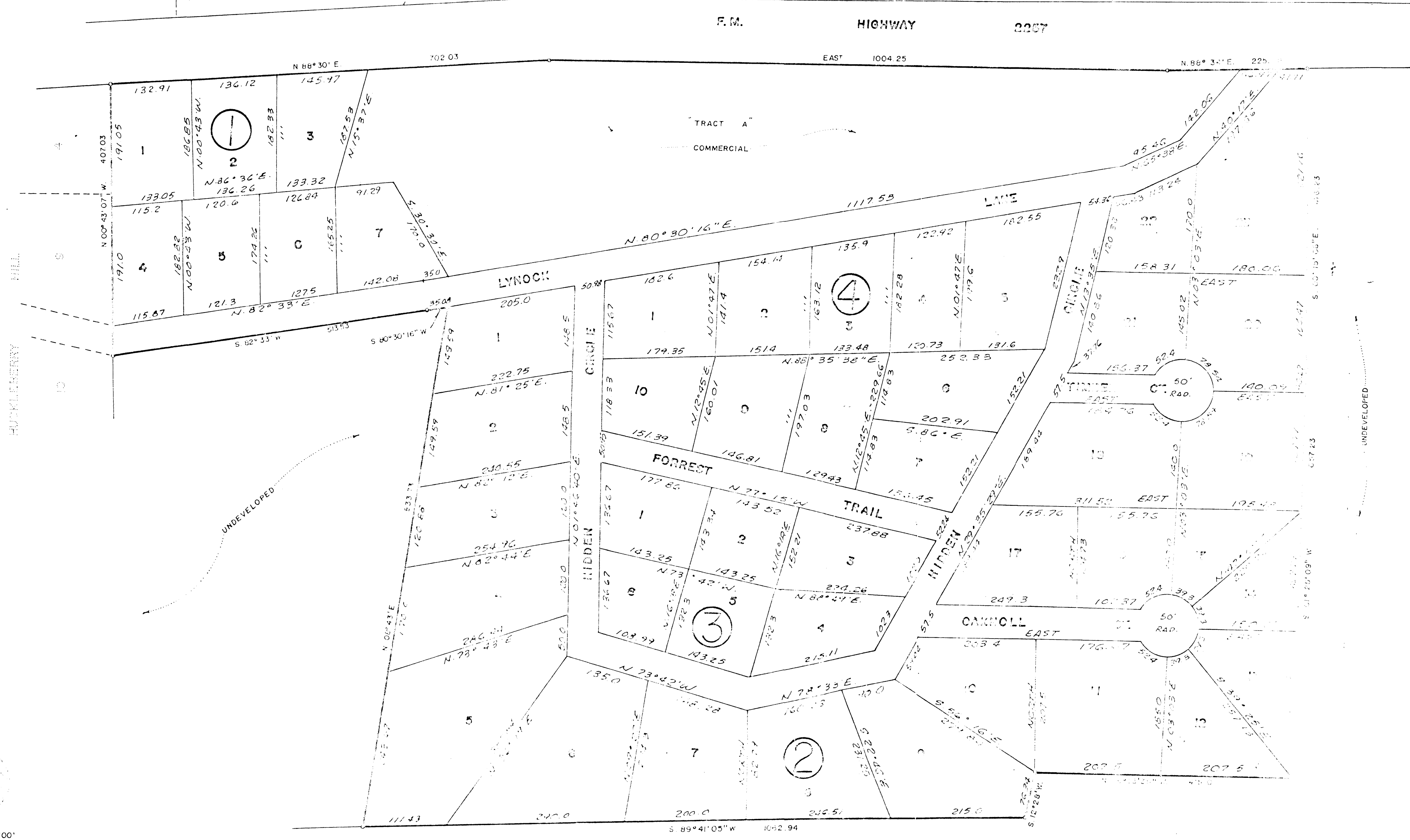
Jimmy Lynn
JIMMY LYNN
Milton Dimock
MILTON DIMOCK

STATE OF TEXAS
COUNTY OF PARKER

BEFORE ME, the undersigned authority on this day personally appeared JIMMY LYNN and MILTON DIMOCK, known to me to be the parties whose names are subscribed to the foregoing instrument and acknowledged to me that they executed the same for the purposes and consideration therein expressed, in the capacity therein and as the act and deed of said JIMMY LYNN and MILTON DIMOCK.

GIVEN UNDER MY HAND AND SEAL OF OFFICE on this the 9 day of Dec 1901

Robert Lee Jones
NOTARY PUBLIC



NOTE: 1/2" IRON PINS WILL BE SET AT ALL LOT CORNERS AT THE DEVELOPERS REQUEST, AFTER CONSTRUCTION OF ROADS AND UTILITIES.

MEYERING CO.

APPROVED BY PARKER COUNTY

Charles R. Reed
W. W. ...
...

Approved by the Clerk of Court

Robert Lee Jones
Notary Public

STATE OF TEXAS COUNTY OF PARKER

I hereby certify that this instrument was filed on this date, in the public records of the County of Parker County, Texas, and was duly recorded in the volume and page of the public records of Parker County as indicated hereon by me.

RECORDED DEC 21 1901

SEAL *Charles R. Reed*
County Clerk, Parker County, Tex.

WESTWOOD

AN ADDITION TO

PARKER COUNTY, TEXAS

BEING A PORTION OF THE JOHN MCLERRAN SURVEY, ABSTRACT NO. 912, PARKER COUNTY, TEXAS.

RECEIVED AND FILED FOR RECORD

DEC 21 1901

CARRIE REED, Co. Clerk
PARKER COUNTY, TEXAS

By *...* Deputy



Connel Stevens

I certify that this is a true and accurate representation of this survey as made on the ground.

Vol 361 page 79.

Vol. 361 page 79