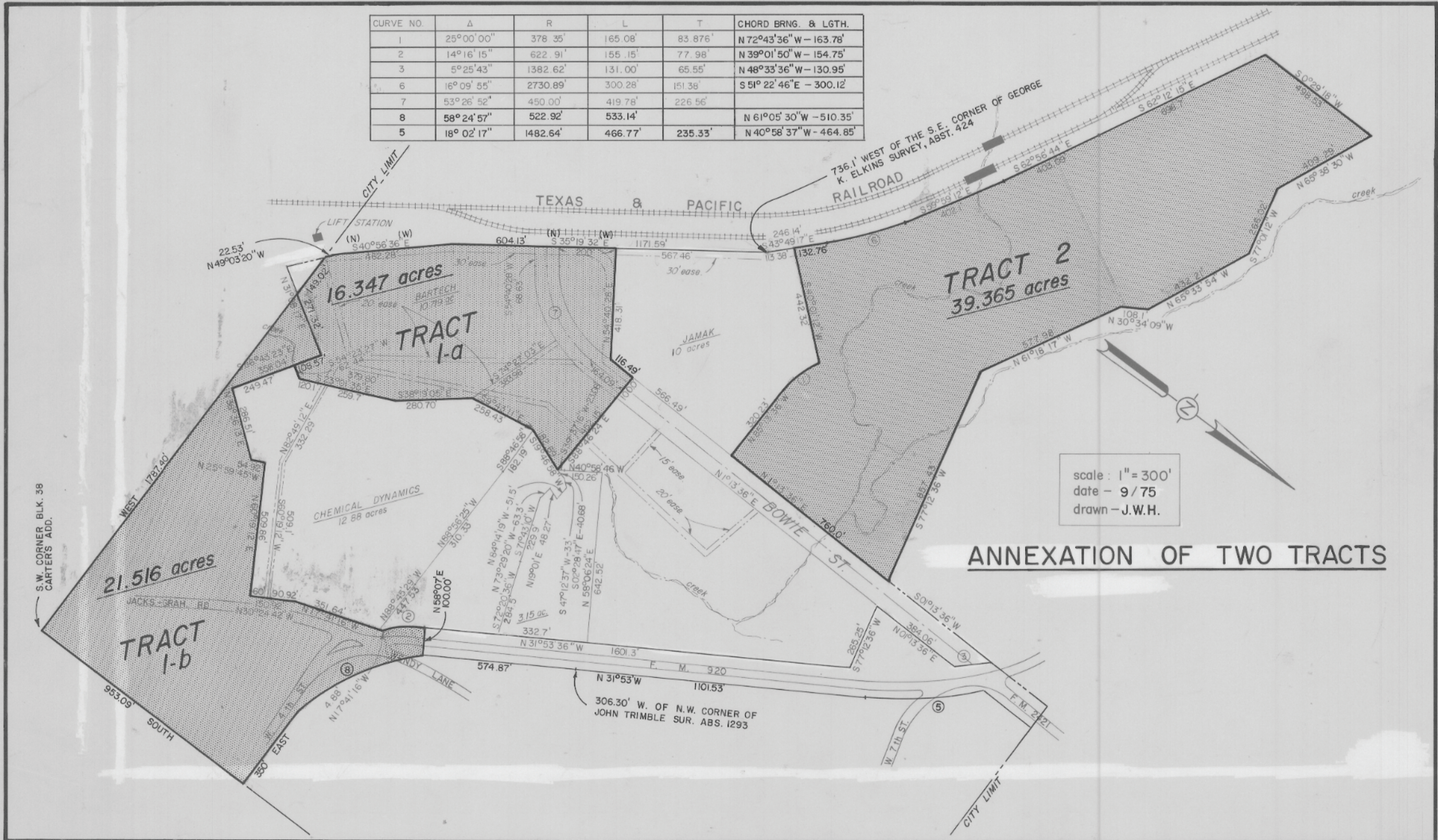


CURVE NO.	Δ	R	L	T	CHORD BRNG. & LGTH.
1	25°00'00"	378.35'	165.08'	83.876'	N 72°43'36" W - 163.78'
2	14°16'15"	622.91'	155.15'	77.98'	N 39°01'50" W - 154.75'
3	5°25'43"	1382.62'	131.00'	65.55'	N 48°33'36" W - 130.95'
6	16°09'55"	2730.89'	300.28'	151.38'	S 51°22'46" E - 300.12'
7	53°26'52"	450.00'	419.78'	226.56'	
8	58°24'57"	522.92'	533.14'		N 61°05'30" W - 510.35'
5	18°02'17"	1482.64'	466.77'	235.33'	N 40°58'37" W - 464.85'



ANNEXATION OF TWO TRACTS