

B 574

FILED AND RECORDED
OFFICIAL PUBLIC RECORDS
On: Feb 28, 2001 at 03:23P
Document Number: 00409809
Amount: .00
By: Patricia Nelson

STATE OF TEXAS COUNTY OF PARKER
I hereby certify that this instrument was
filed on the date and time stamped herein by me
and was duly recorded in the volume and page
of the named records of Parker County
as stamped herein by me.
Feb 28, 2001

Jeanne Brunson, County Clerk
Parker County

LINE CHART

Line	Bearing	Distance
1	N 4°42'00"W	6.55'
19	S 13°21'22"E	34.33'
24	N 13°21'15"W	32.54'
31	S 27°40'58"E	50.00'
32	S 62°19'00"W	83.35'
33	N 62°18'52"E	1.96'

Note: 3/8" steel pins are marked at all corners
unless otherwise noted on plat.

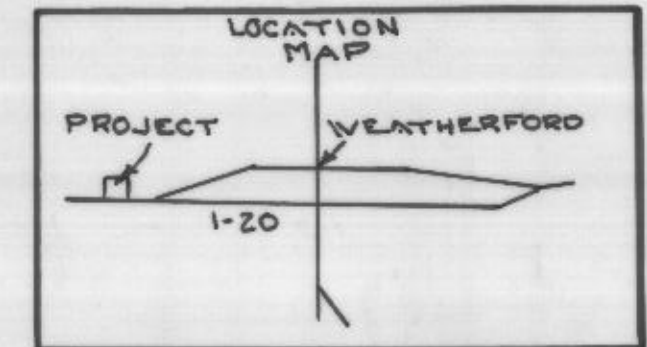
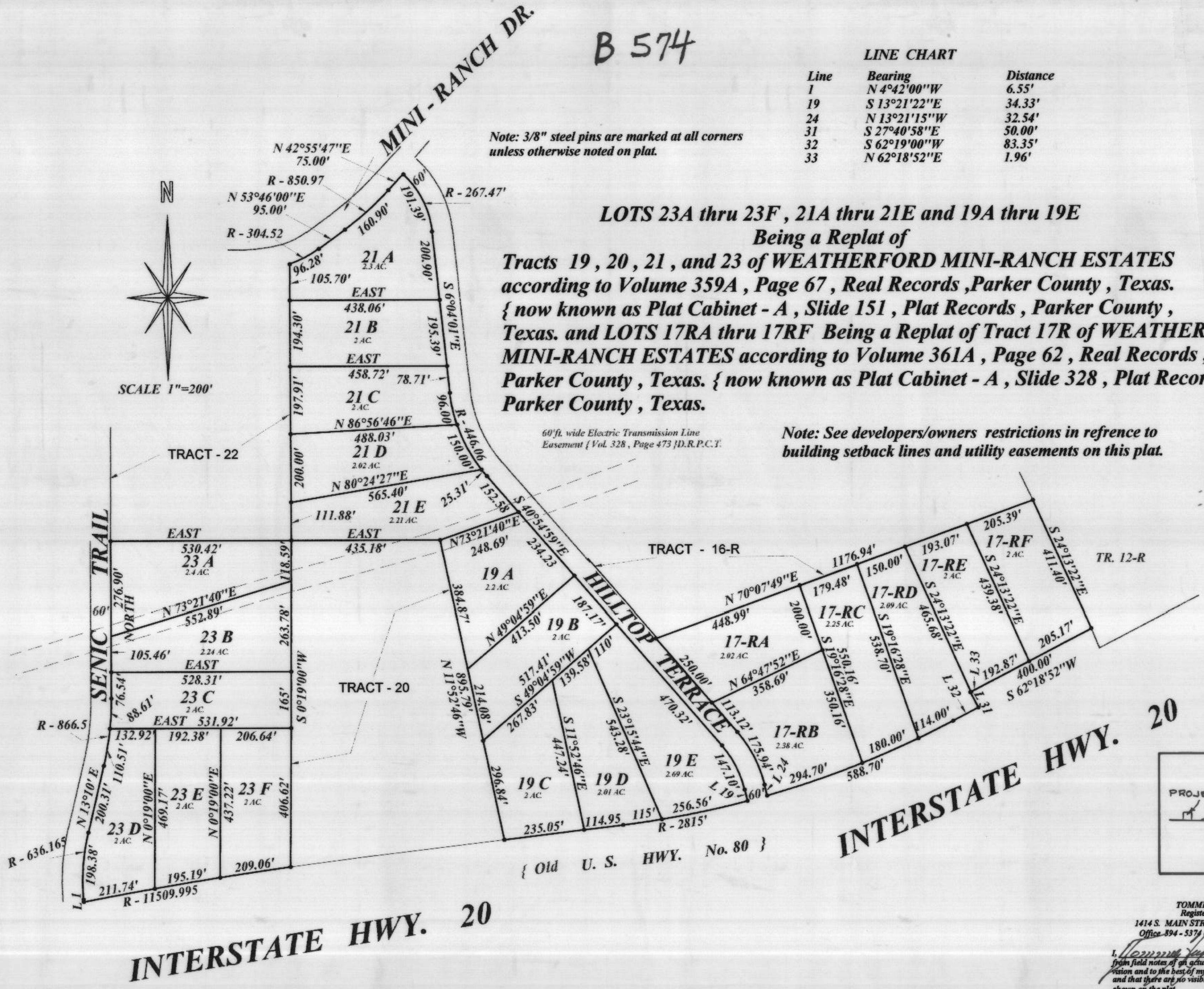
LOTS 23A thru 23F, 21A thru 21E and 19A thru 19E

Being a Replat of

Tracts 19, 20, 21, and 23 of WEATHERFORD MINI-RANCH ESTATES
according to Volume 359A, Page 67, Real Records, Parker County, Texas.
{ now known as Plat Cabinet - A, Slide 151, Plat Records, Parker County,
Texas. and LOTS 17RA thru 17RF Being a Replat of Tract 17R of WEATHERFORD
MINI-RANCH ESTATES according to Volume 361A, Page 62, Real Records,
Parker County, Texas. { now known as Plat Cabinet - A, Slide 328, Plat Records,
Parker County, Texas.

Note: See developers/owners restrictions in reference to
building setback lines and utility easements on this plat.

60'ft. wide Electric Transmission Line
Easement { Vol. 328, Page 473 J.D.R.P.C.T.



TOMMIE HUGHES AND ASSOCIATES
Registered Professional Land Surveyor
1414 S. MAIN STREET WEATHERFORD, TEXAS
Office 894-5374 or 590-0212 Home 613-1164

I, Tommie Hughes certify that this map was prepared
from field notes of an actual ground survey made by me or under my super-
vision and to the best of my knowledge and belief represents said survey,
and that there are no visible encroachments or protrusions other than those
shown on the plat.

Date 3-5-98 No. 17,444