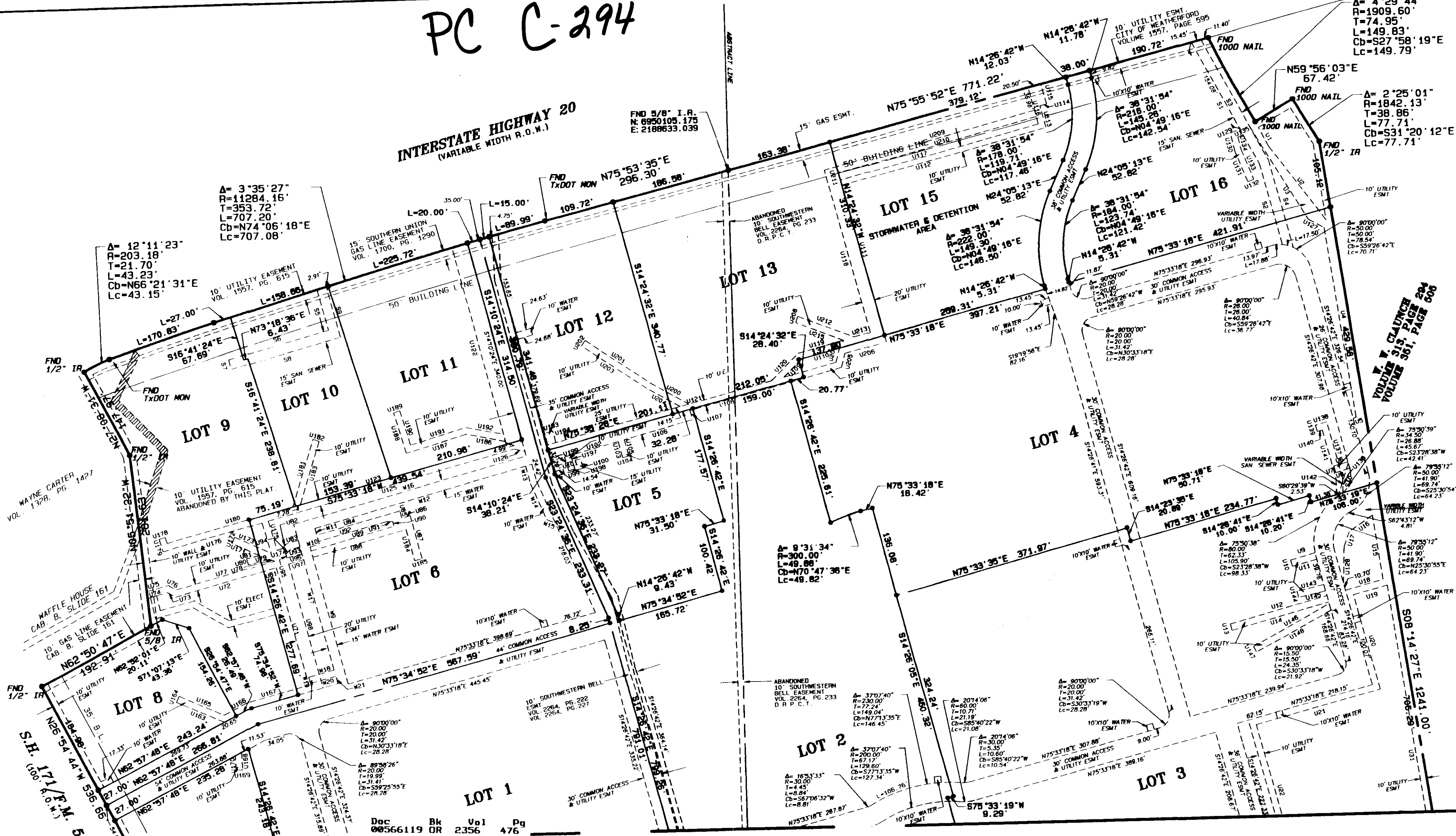


PC C-294

INTERSTATE HIGHWAY 20
(VARIABLE WIDTH R.O.W.)



WAYNE CARTER
VOL. 1328, PG. 1427

A= 4°29'44"
R=1909.60'
T=74.95'
L=149.83'
Cb=S27°58'19"E
Lc=149.79'

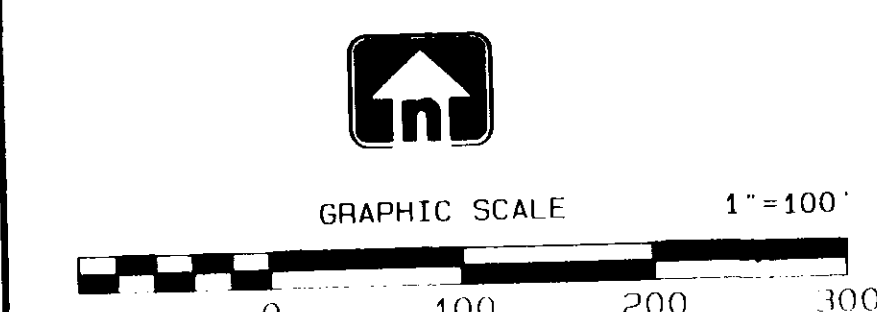
A= 2°25'01"
R=1842.13'
T=38.86'
L=77.71'
Cb=S31°20'12"E
Lc=77.71'

V. W. CLAUWER
VOLUME 315, PAGE 294
VOLUME 361, PAGE 506

A= 75°30'39"
R=34.50'
T=28.88'
L=45.61'
Cb=S23°28'38"W
Lc=42.41'

A= 79°55'12"
R=50.00'
T=41.90'
L=69.74'
Cb=N25°30'55"E
Lc=64.23'

MATCHLINE SHEET 2



Graham Associates, Inc.
CONSULTING ENGINEERS & PLANNERS
600 SIX FLAGS DRIVE, SUITE 500
ARLINGTON, TEXAS 76011 (817) 640-8535

Doc 00566119 Bk OR Vol 2356 Pg 476

FILED AND RECORDED
OFFICIAL PUBLIC RECORDS
On Aug 11, 2005 at 12:39P
Instrument Number: 00566119
Amount: \$1.00
By: Indira Nelson

STATE OF TEXAS COUNTY OF PARKER
I hereby certify that this instrument was
filed on the date and time stamped hereon by me
and has duly recorded in the volume and page
of the named records of Parker County
as stated herein by me.

Aug 11, 2005

JENNIE MORGAN, COUNTY CLERK
PARKER COUNTY

FINAL PLAT
Approved by the City of Weatherford for filing at the office
of the County Clerk of Parker County, Texas.

RECOMMENDED BY:
Miris Saunders
Signature of Chairperson

Planning and Zoning Commission
City of Weatherford, Texas
8-10-05
Date of Recommendation

APPROVED BY:
J. M. [Signature]
Signature of Mayor

City Council
City of Weatherford, Texas
8-11-05
Date of Approval

ATTEST:
[Signature]
City Secretary

8-11-05
Date

ACCT. NO.: 13043
SCH. DIST.: [Blank]
CITY: [Blank]
MAP NO.: [Blank]

FINAL PLAT
LOTS 1-17
WEATHERFORD MARKETPLACE ADDITION

A 65.24 ACRE TRACT OF LAND SITUATED IN THE
A.M. KROUSE SURVEY ABSTRACT NO. 785
RUFUS INMAN SURVEY ABSTRACT NO. 726
V. HOLMES SURVEY ABSTRACT NO. 658
CITY OF WEATHERFORD
PARKER, COUNTY TEXAS