

VICINITY MAP NOT TO SCALE



SCALE 1" = 30'
0' 30' 60'

- Legend
- MONUMENT FOUND
 - ⊙ MONUMENT SET
 - XF "X" CUT FOUND
 - FIR FOUND IRON ROD
 - CIRF CAPPED IRON ROD FOUND
 - CIRS CAPPED IRON ROD SET "WESTWOOD PS"
 - OHE OVERHEAD ELECTRIC
 - AC. ACRES
 - SQ. FT. SQUARE FEET
 - P.R.P.C.T. PLAT RECORDS, PARKER COUNTY, TEXAS
 - D.R.P.C.T. DEED RECORDS, PARKER COUNTY, TEXAS
 - O.P.R.P.C.T. OFFICIAL PUBLIC RECORDS, PARKER COUNTY, TEXAS

Line #	Length	Direction
L1	10.01	S88°53'53"W
L2	9.21	N89°39'10"W
L3	38.84	N00°20'19"E
L4	34.75	S33°33'22"E
L5	134.36	S01°17'57"W

City of Weatherford
Inst. No. 201614351, D.R.P.C.T.
LOT 1, BLOCK A
Cleburne
Avenue Addition
Cab. C, Slide 701
P.R.P.C.T.
"ZONED C1"

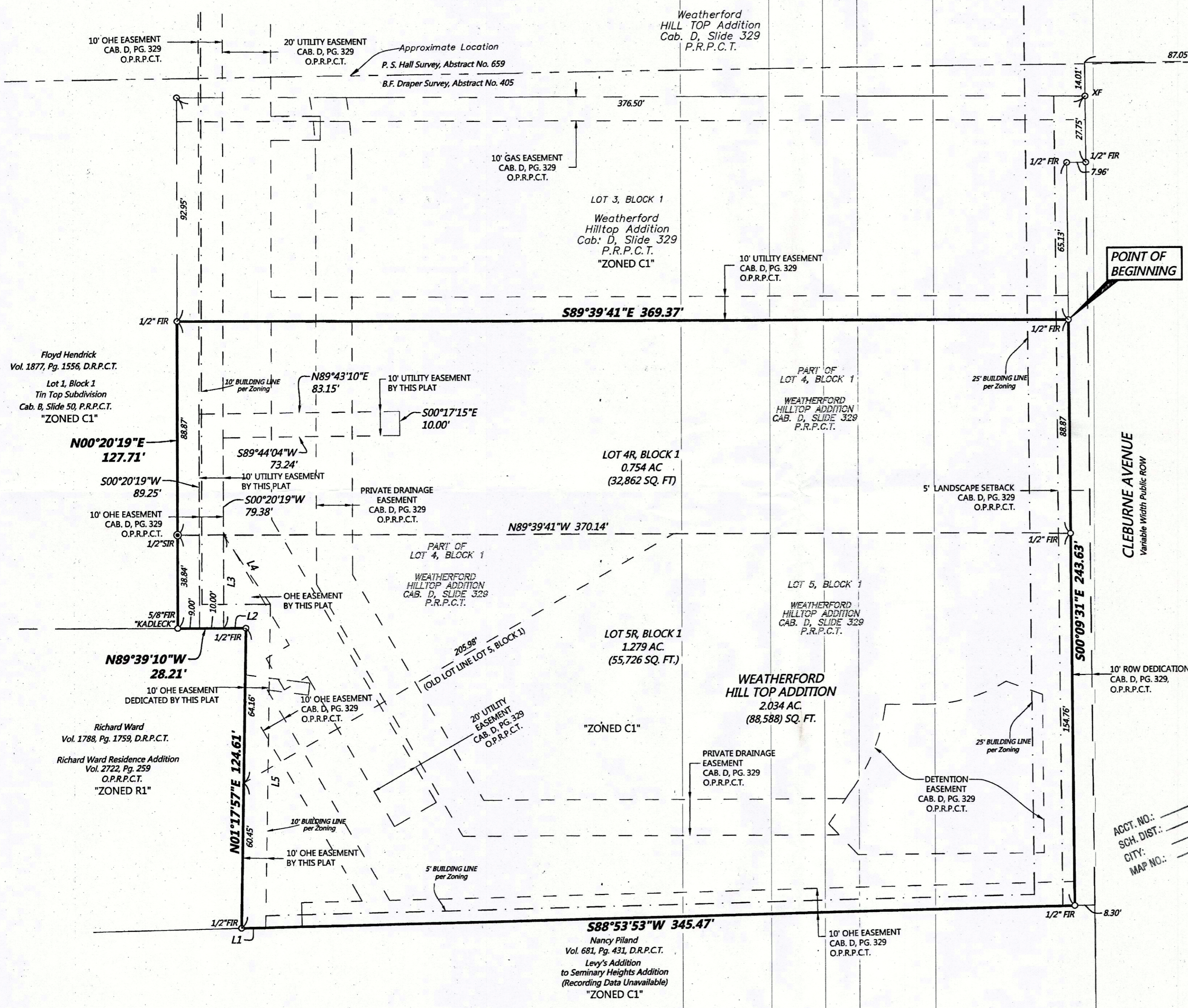
Volume or Cabinet **E** Page or Slide **199**

Purpose of this Amending Plat is to Revise the Lot line between Lots 4 and 5, this consist of removing the break in the line and straightening it out.

**AMENDED PLAT
WEATHERFORD HILL TOP ADDITION
LOTS 4R, AND 5R, OF BLOCK 1
2.034 ACRE TRACT
BEING REPLAT OF LOTS 4, AND 5, BLOCK 1
WEATHERFORD HILLTOP ADDITION
CABINET D, SLIDE 329
B.F. DRAPER SURVEY, ABSTRACT NO. 405
CITY OF WEATHERFORD, PARKER COUNTY, TEXAS**

Westwood

Westwood Professional Services, Inc. westwoodps.com
2740 North Dallas Pkwy., Ste. 280 Plano, TX 75093
Phone (214) 473-4840 Toll Free (888) 937-5150
TBPE Firm Reg. No. 11756 TBPLS Firm Reg. No. 10074301



FLOOD NOTE

The property described hereon lies in Zone X (areas determined to be outside the 500 year flood plain) according to the FEMA Flood Insurance Rate Map Panel 48367C0385E dated September 26, 2008.

19041.001.004.00
19041.001.005.00