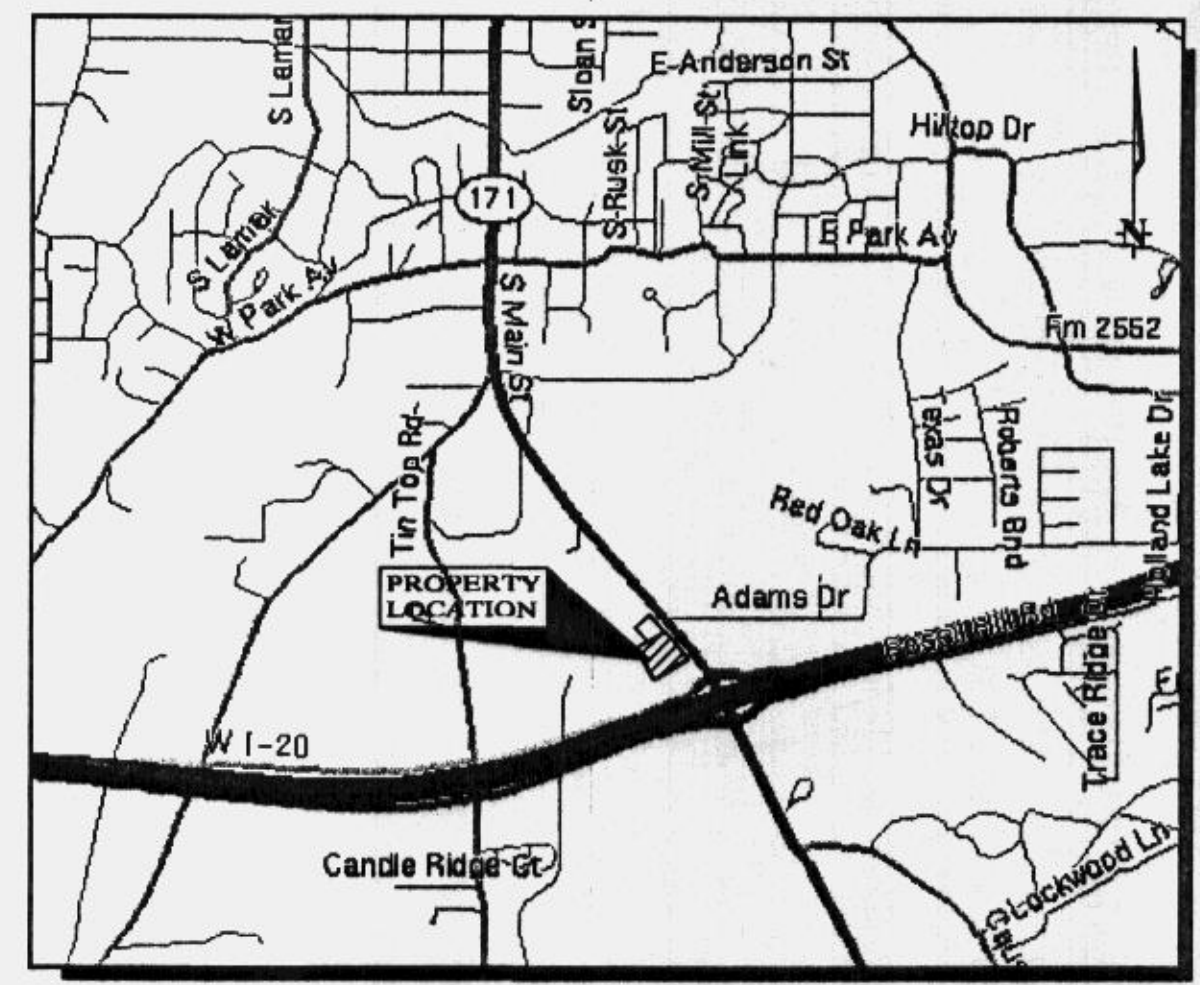
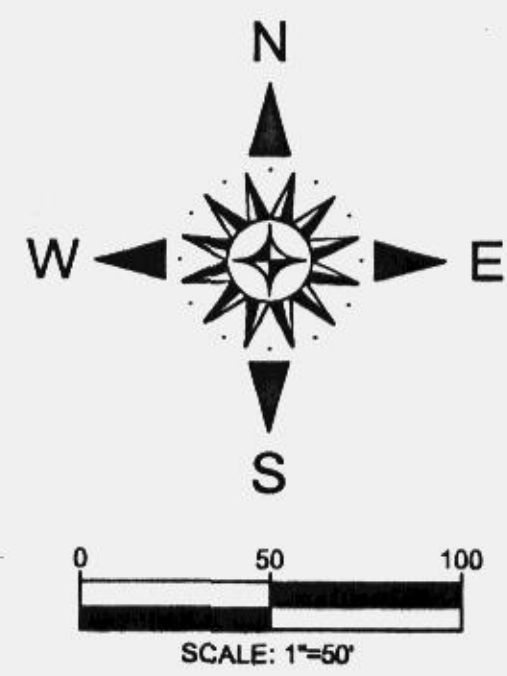
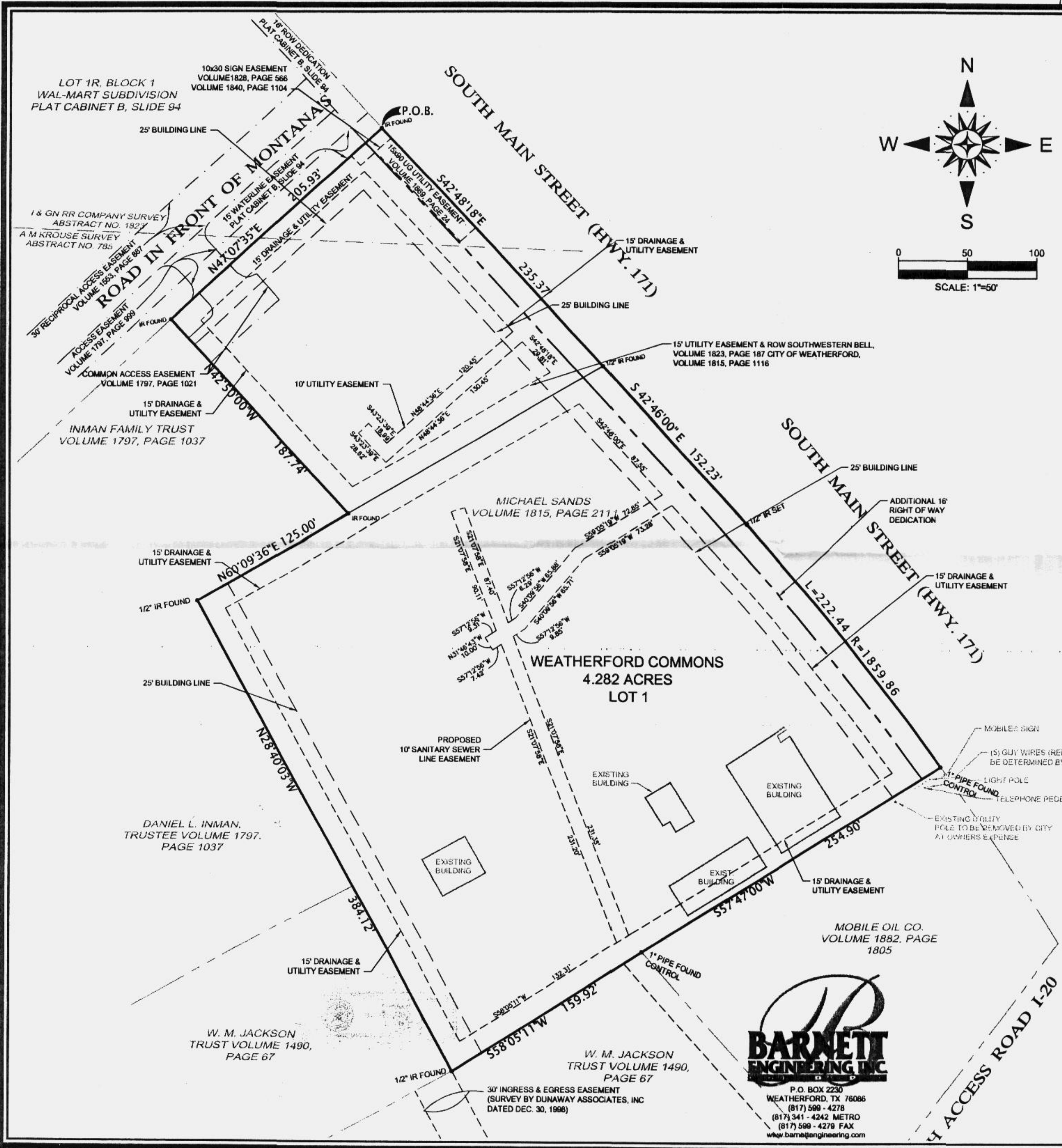


Plat Cabinet C-51



LOCATION MAP
SCALE: 1"=2000'

Doc 00495482 Bk DR Vol 2154 Pg 858
 FILED AND RECORDED
 OFFICIAL PUBLIC RECORDS
 On Oct 01, 2003 at 01:23P
 Document Number: 00495482
 Amount: \$6.00
 By Sherry Jackson
 C-51
 STATE OF TEXAS COUNTY OF PARKER
 I hereby certify that this instrument was
 filed on the date and time stamped hereon by me
 and was duly recorded in the volume and page
 of the named records of Parker County
 as stamped hereon by me.
 Oct 01, 2003
 JEROME HANCOCK, COUNTY CLERK
 PARKER COUNTY

OWNER:
 SAM BROUS
 STONELEIGH HUFF BROUS McDOWELL
 301 COMMERCE STREET
 SUITE 1750
 FORT WORTH, TEXAS 76102
 (817) 877-4433 PHONE
 (817) 870-2826 FAX

SURVEYOR:
 DAVID HARLAN, R.P.L.S.
 HARLAN LAND SURVEYING, INC.
 215 EAST EUREKA
 WEATHERFORD, TEXAS 76086
 (817) 599-0880 Phone
 (817) 341-2833 Fax

ACCT. NO.: 19030
 SCH. DIST.: WE
 CITY: WE
 MAP NO.: H-16

AMENDED
 FINAL PLAT
 OF

WEATHERFORD COMMONS
 LOT 1
 2010 SOUTH MAIN STREET
 A.M. KROUSE SURVEY, AB. NO. 785
 AN ADDITION TO THE CITY OF WEATHERFORD
 PARKER COUNTY, TEXAS
 FEBRUARY, 2003

