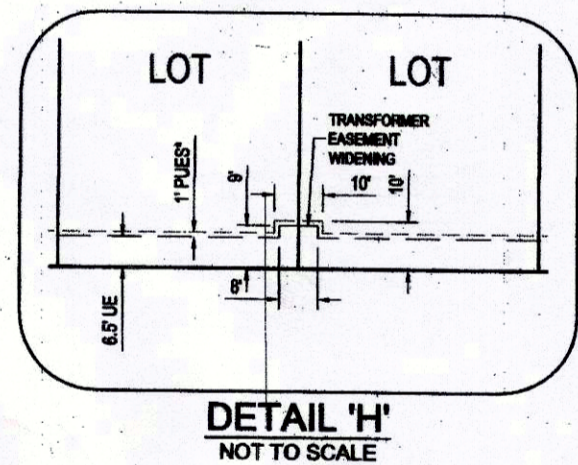
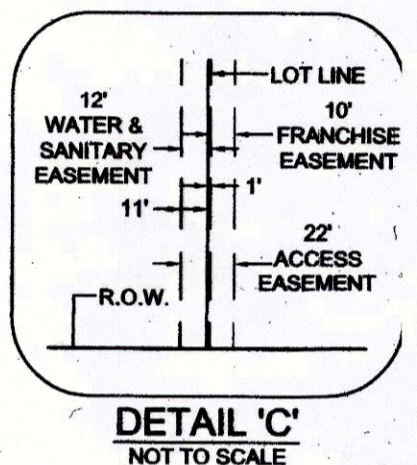
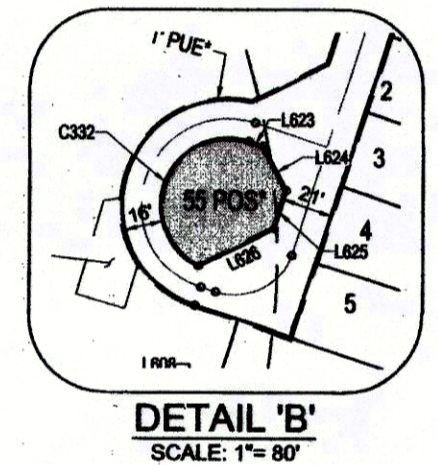
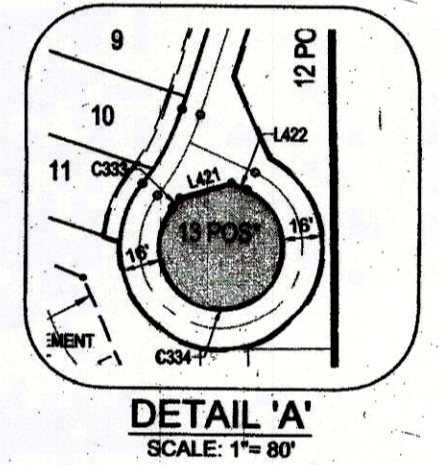


- LEGEND**
- IRF - IRON ROD FOUND WITH PLASTIC CAP STAMPED "DUNAWAY ASSOC. LP" UNLESS NOTED OTHERWISE.
 - HZF - 5/8" IRON ROD FOUND WITH PLASTIC CAP STAMPED "HUITT-ZOLLARS"
 - IRB - 5/8" IRON ROD SET WITH PLASTIC CAP STAMPED "HUITT-ZOLLARS"
 - MIN. FF - MINIMUM FINISH FLOOR
 - PDE - PRIVATE DRAINAGE EASEMENT (BY THIS PLAT)
 - UE - UTILITY EASEMENT (BY THIS PLAT)
 - 1-POS* - PRIVATE HOA/DEVELOPER OWNED AND MAINTAINED OPEN SPACE & PRIVATE SIDEWALK ACCESS EASEMENT (BY THIS PLAT)
 - ◆ - DENOTES STREET NAME CHANGE
 - D.R.P.C.T. - DEED RECORDS, PARKER COUNTY, TEXAS
 - P.R.P.C.T. - PLAT RECORDS, PARKER COUNTY, TEXAS
 - O.P.R.P.C.T. - OFFICIAL PUBLIC RECORDS, PARKER COUNTY, TEXAS
 - 1" PUE* - 1" WIDE PRIVATE UTILITY EASEMENT (BY THIS PLAT)



**FINAL PLAT
WALSH RANCH - QUAIL VALLEY**

- | | | |
|---|--|--|
| Lots 1 thru 44, Block 21 Lots 1 thru 55, Block 22 Lots 1 thru 24, Block 23 Lots 1 thru 12, Block 24 Lots 1 thru 22, Block 26 Lots 1 thru 21, Block 27 Lots 1 thru 12, Block 28 Lots 1 thru 6, Block 29 | Lots 1 thru 18, Block 30 Lots 1 thru 15, Block 31 Lots 1 thru 41, Block 32 Lots 1 thru 21, Block 33 Lots 1 thru 12, Block 34 Lots 1 thru 6, Block 35 Lots 1 thru 9, Block 36 Lot 1, Block 37 Lot 1, Block 38 | Lot 1, Block 39 Lot 1, Block 40 Lot 1, Block 41 Lot 1, Block 42 Lot 1, Block 43 Lot 1, Block 44 Lot 1, Block 45 Lot 1, Block 46 |
|---|--|--|

109.5 ACRES

AN ADDITION TO THE CITY OF FORT WORTH,
PARKER COUNTY, TEXAS
SITUATED IN THE
I. & G.N. R.R. CO. SURVEY ABSTRACT No. 1996



ACCT. NO.: 30005
SCH. DIST.: AL
CITY: CFW
MAP NO.: N-10

OWNERS
QUAIL VALLEY DEVCO II, LLC
8401 NORTH CENTRAL EXPRESSWAY
SUITE 350, DALLAS, TEXAS 75225
PHONE: (214) 292-3410
FAX: (214) 292-3411

PREPARED BY:
HUITT-ZOLLARS
Huitt-Zollars, Inc. Dallas
1717 McKinney Avenue, Suite 1400, Dallas, TX 75202
Phone (214) 871-3311 Fax (214) 871-0757

E-488

DWG: \\HZDALLAS\1\disk3\Survey\30306100-Walsh Ranch\02-Quail Valley\Phase 3 - Planning Area\Plats\dwg\FINAL PLAT_PA-2B TRACT2.dwg
 USER: bcole
 DATE: Feb 19, 2020 9:47am
 XREFS: PA-2-B_FP_BD PA-2-A_BASE EXISTING_BASE 20161217_Prop_Base_Existing_Lot Layout_3061124_Prop_Base_Lot Layout

