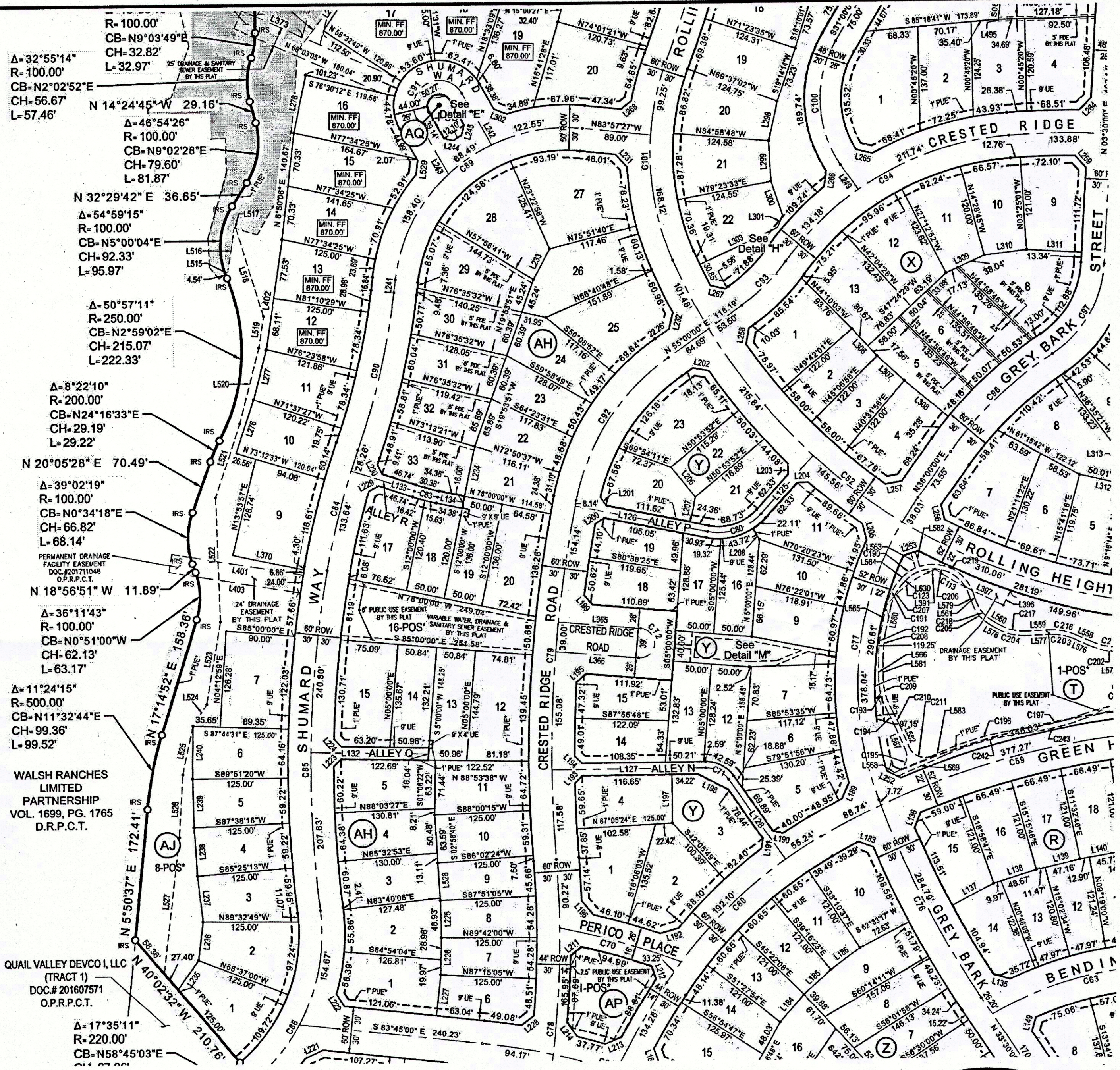
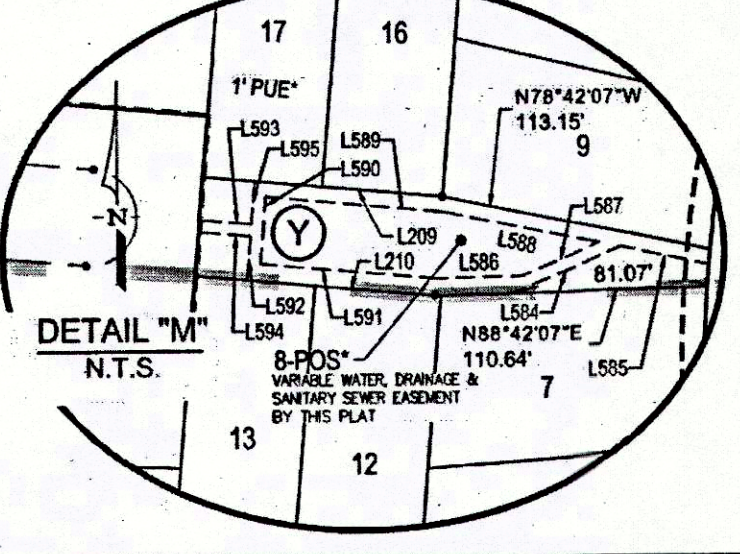
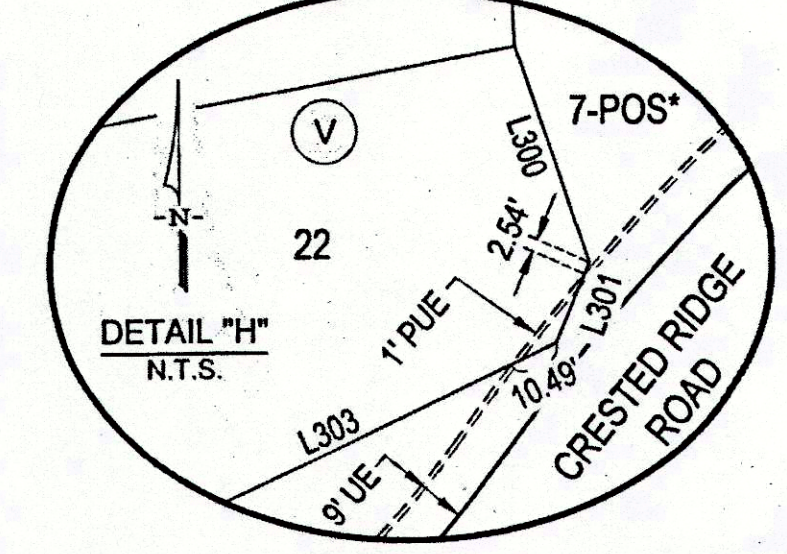
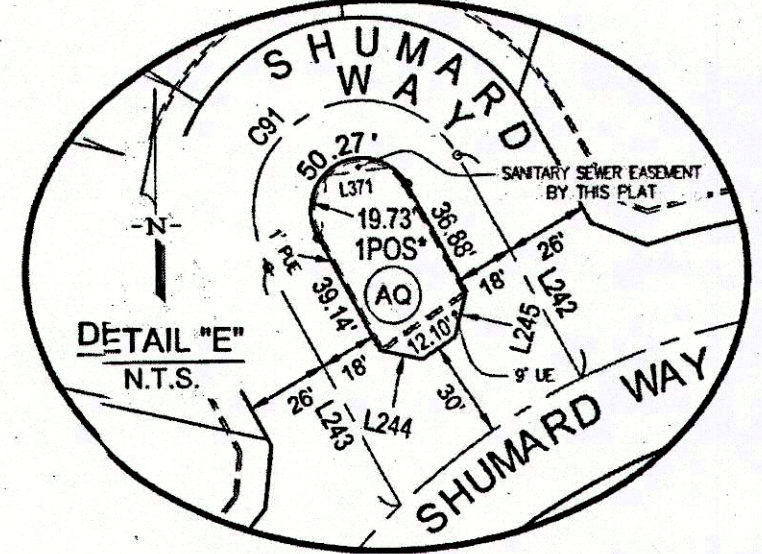
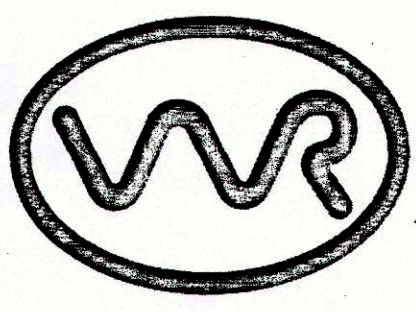


USER: bcole  
 DWG: \\HZFTWORTH\disk2\proj\R30306102\05\_CADD & BIM\AutoCAD\306102\_DWG\Plot - Phase 1C - Final Plat 18x24-BD - 306102.Lot Layout  
 DATE: Jul 31, 2017 12:50pm

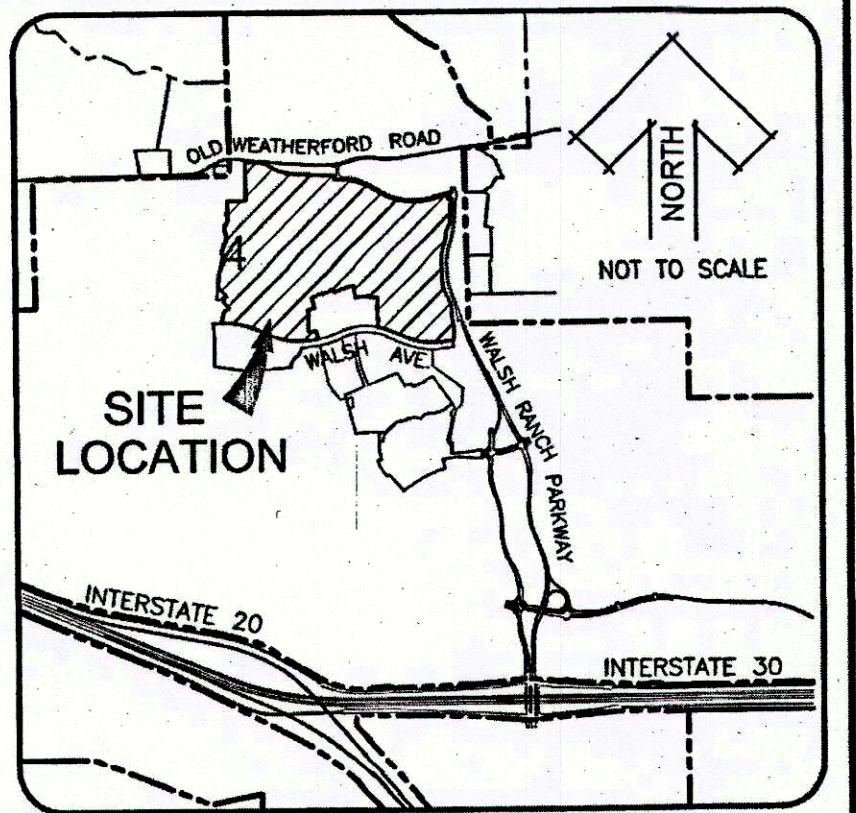


WALSH RANCHES LIMITED PARTNERSHIP VOL. 1699, PG. 1765 D.R.P.C.T.  
 QUAIL VALLEY DEVCO I, LLC (TRACT 1) DOC.# 20160751 O.P.R.P.C.T.



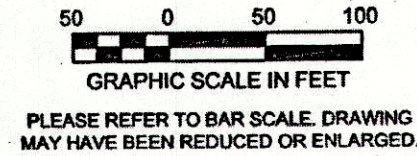
ACCF NO: 19003  
 SCH. DIST: AL  
 CITY: CFW  
 MAP NO: M-15

D 756



VICINITY MAP

- LEGEND**
- IRF - IRON ROD FOUND WITH PLASTIC CAP STAMPED "DUNAWAY ASSOC. LP" UNLESS NOTED OTHERWISE.
  - HZF - 5/8" IRON ROD FOUND WITH PLASTIC CAP STAMPED "HUITT-ZOLLARS"
  - IRS - 5/8" IRON ROD SET WITH PLASTIC CAP STAMPED "HUITT-ZOLLARS"
  - MIN FF - MINIMUM FINISH FLOOR
  - POE - PRIVATE DRAINAGE EASEMENT
  - UE - UTILITY EASEMENT
  - BL - BUILDING LINE
  - 1-POS\* - PRIVATE HOA/DEVELOPER OWNED AND MAINTAINED OPEN SPACE & PRIVATE SIDEWALK ACCESS EASEMENT
  - ◆ - DENOTES STREET NAME CHANGE
  - D.R.P.C.T. - DEED RECORDS, PARKER COUNTY, TEXAS
  - P.R.P.C.T. - PLAT RECORDS, PARKER COUNTY, TEXAS
  - O.P.R.P.C.T. - OFFICIAL PUBLIC RECORDS, PARKER COUNTY, TEXAS
  - 1' PUE\* - 1' WIDE PRIVATE UTILITY EASEMENT



PLEASE REFER TO BAR SCALE DRAWING MAY HAVE BEEN REDUCED OR ENLARGED.

BASIS OF BEARINGS: Bearings are based on the Texas State Plane Coordinate System, North Central Zone (4202) North American Datum 1983 (2011).

**FINAL PLAT  
 WALSH RANCH, QUAIL VALLEY**

Lots 1 thru 33, Lot 19 POS\*, Block A, Lots 1 thru 16, Block B, Lots 1 thru 16, Block C, Lots 1 thru 10, Block D, Lots 1 thru 7, Lot 8 POS\*, Block E, Lots 5 thru 14, Block F, Lots 2 thru 14, Lots 16 thru 20, Lot 15 POS\*, Block G, Lots 1 thru 4, Lots 6 thru 33, Lots 40 thru 46, Lot 5 POS\*, Block H, Lots 1 thru 6, Lots 8 thru 13, Lots 15 thru 23, Lot 7 POS\*, Lot 14 POS\*, Block J, Lots 1 thru 4, Lots 6 thru 14, Lot 5 POS\*, Block K, Lots 1 thru 14, Lots 16 thru 21, Lots 23 thru 34, Lot 15 POS\*, Lot 22 POS\*, Block L, Lots 8 thru 10, Block M, Lots 4 thru 7, Lots 9 thru 27, Lot 8 POS\*, Block R, Lots 2 thru 25, Lot 1 POS\*, Block S, Lot 1 POS\*, Block T, Lots 1 thru 3, Lots 5 thru 20, Lot 4 POS\*, Block U, Lots 1 thru 6, Lots 8 thru 22, Lot 7 POS\* Block V, Lots 1 thru 8, Block W, Lots 1 thru 13, Block X, Lots 1 thru 7, Lots 9 thru 23, Lot 8 POS\*, Block Y, Lots 1 thru 18, Block Z, Lots 1 thru 8, Block AA, Lots 7 thru 16, Block AB, Lots 1 thru 13, Block AC, Lots 1 thru 8, Block AD, Lot 1 POS\*, Block AE, Lots 1 thru 8, Block AF, Lots 1 thru 3, Lots 5 thru 12, Lot 4 POS\*, Block AG, Lots 1 thru 15, Lots 17 thru 33, Lot 16 POS\*, Block AH, Lots 1 thru 7, Lots 9 thru 28, Lot 8 POS\*, Block AJ, Lot 1 POS\*, Block AL, Lot 1 POS\*, Block AM, Lot 1 POS\*, Block AN, Lot 1 POS\*, Block AP, Lot 1 POS\*, Block AQ, Lot 1 POS\*, Block AR

**177.98 ACRES**  
 AN ADDITION TO THE CITY OF FORT WORTH,  
 PARKER COUNTY, TEXAS

SITUATED IN THE  
 M.C. MOULTON SURVEY, ABSTRACT NO. 934,  
 HEIRS OF C.H. HIGBEE SURVEY, ABSTRACT NO. 2740,  
 I. & G.N. R.R. Co. SURVEY, ABSTRACT NO. 2004, I. & G.N. R.R. Co. SURVEY, ABSTRACT NO. 1996

COUNTY RECORDING INFORMATION

OWNER  
**Quail Valley Devco I, LLC**  
 8401 NORTH CENTRAL EXPRESSWAY  
 SUITE 350, DALLAS, TEXAS 75225  
 PHONE: (214) 292-3410  
 FAX: (214) 292-3411

PREPARED BY:  
**HUITT-ZOLLARS**  
 Huitt-Zollars, Inc. Dallas  
 1717 McKinney Avenue, Suite 1400, Dallas, TX 75202  
 Phone (214) 871-3311 Fax (214) 871-0757

JULY 2017 SHEET 4 OF 14