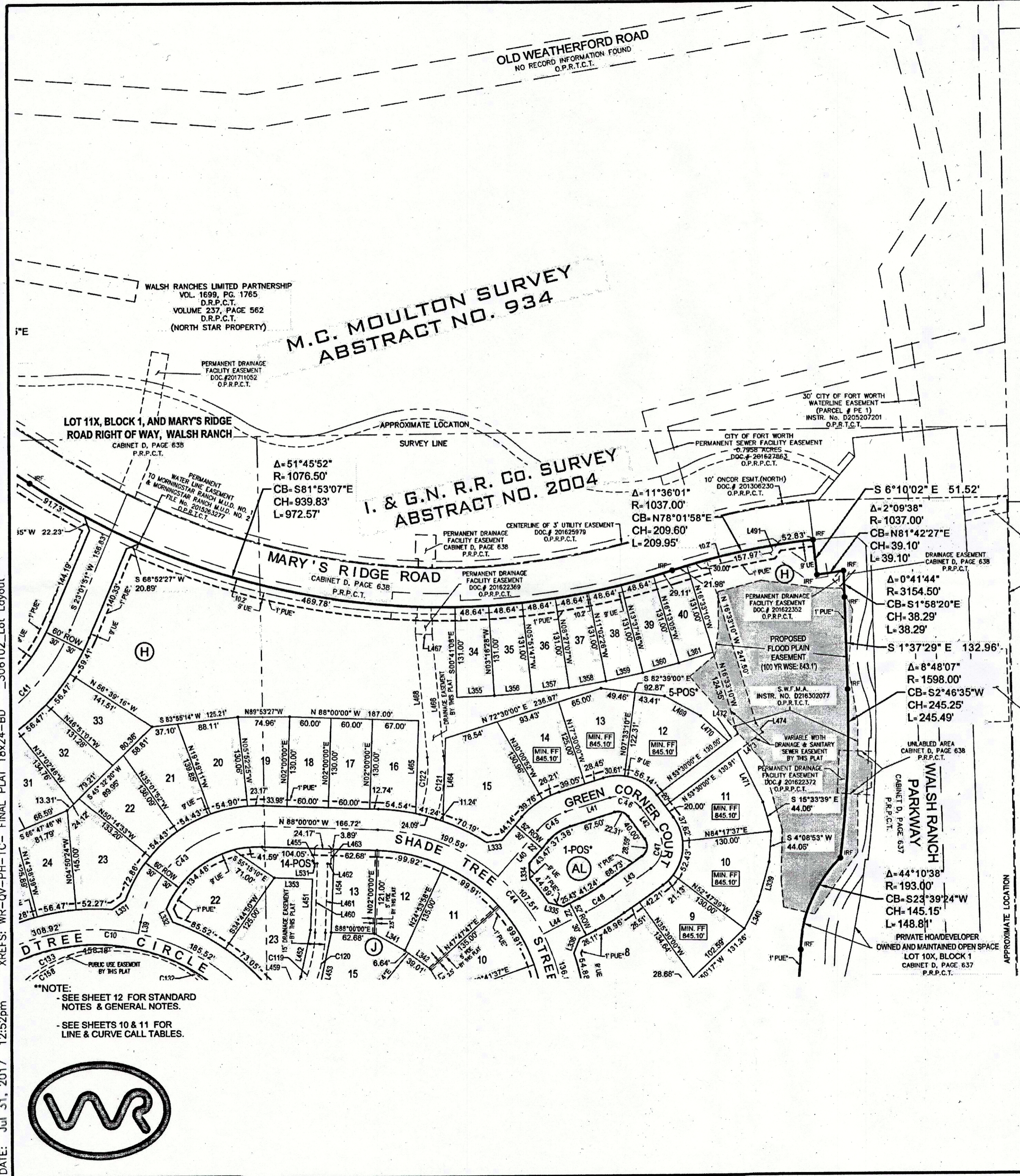
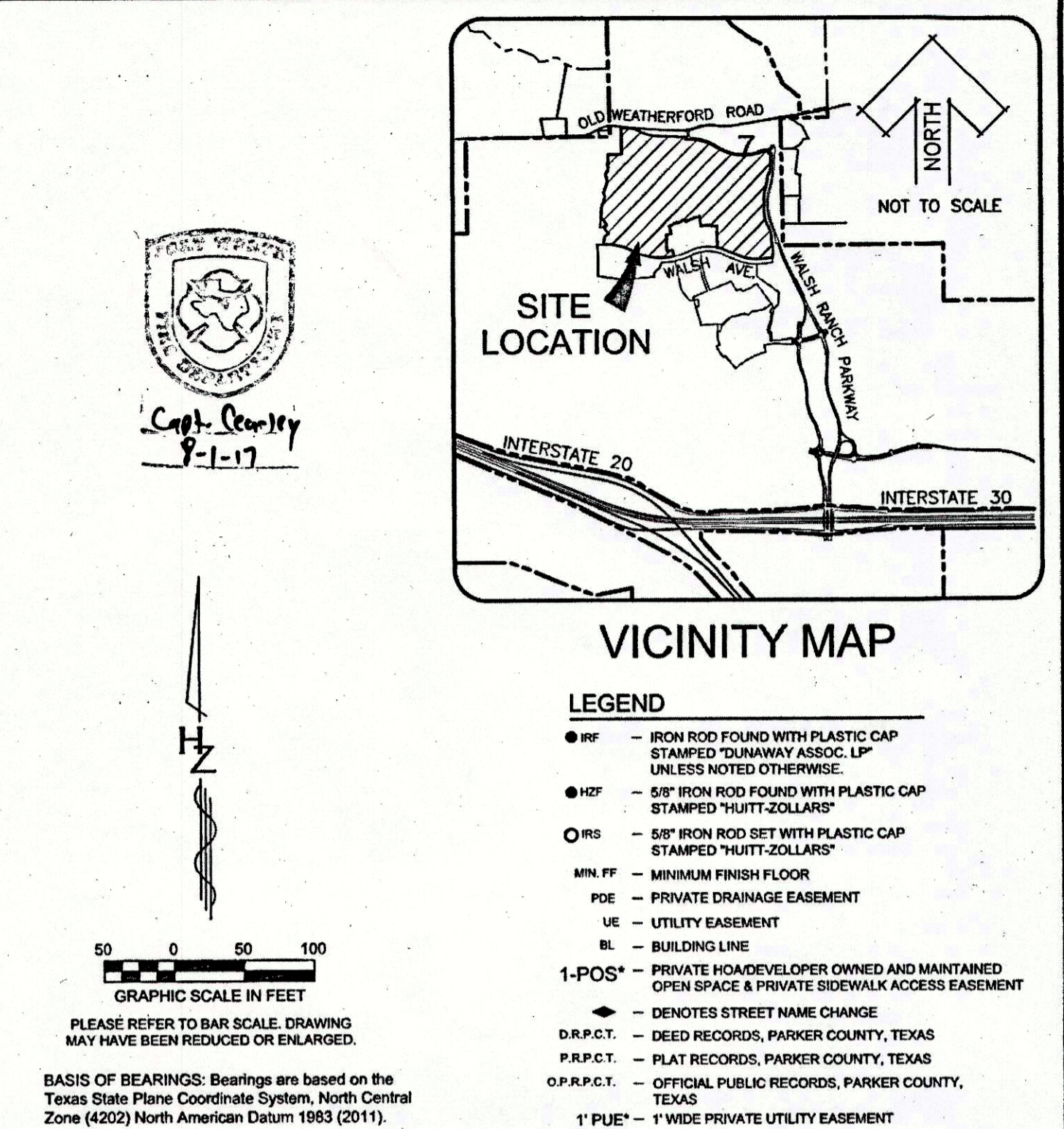
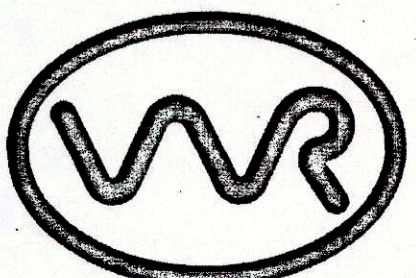


DWG: \\HZFWORTH\disk2\proj\R30306102\05_CADD & BIM\AutoCAD\306102_DWG\Plot - Phase 1C - Final Plat Temp\C3D-WR-QV-PH-1C- FINAL PLAT.dwg
 DATE: Jul 31, 2017 12:52pm
 USER: bcole
 XREFS: WR-QV-PH-1C- FINAL PLAT 18x24-BD_306102_Lot Layout



****NOTE:**
 - SEE SHEET 12 FOR STANDARD NOTES & GENERAL NOTES.
 - SEE SHEETS 10 & 11 FOR LINE & CURVE CALL TABLES.



FINAL PLAT
WALSH RANCH, QUAIL VALLEY
 Lots 1 thru 33, Lot 19 POS*, Block A, Lots 1 thru 16, Block B, Lots 1 thru 16, Block C, Lots 1 thru 10, Block D, Lots 1 thru 7, Lot 8 POS*, Block E, Lots 5 thru 14, Block F, Lots 2 thru 14, Lots 16 thru 20, Lot 15 POS*, Block G, Lots 1 thru 4, Lots 6 thru 33, Lots 40 thru 46, Lot 5 POS*, Block H, Lots 1 thru 6, Lots 8 thru 13, Lots 15 thru 23, Lot 7 POS*, Lot 14 POS*, Block J, Lots 1 thru 4, Lots 6 thru 14, Lot 5 POS*, Block K, Lots 1 thru 14, Lots 16 thru 21, Lots 23 thru 34, Lot 15 POS*, Lot 22 POS*, Block L, Lots 8 thru 10, Block M, Lots 4 thru 7, Lots 9 thru 27, Lot 8 POS*, Block R, Lots 2 thru 25, Lot 1 POS*, Block S, Lot 1 POS*, Block T, Lots 1 thru 3, Lots 5 thru 20, Lot 4 POS*, Block U, Lots 1 thru 6, Lots 8 thru 22, Lot 7 POS* Block V, Lots 1 thru 8, Block W, Lots 1 thru 13, Block X, Lots 1 thru 7, Lots 9 thru 23, Lot 8 POS*, Block Y, Lots 1 thru 18, Block Z, Lots 1 thru 8, Block AA, Lots 7 thru 16, Block AB, Lots 1 thru 13, Block AC, Lots 1 thru 8, Block AD, Lot 1 POS*, Block AE, Lots 1 thru 8, Block AF, Lots 1 thru 3, Lots 5 thru 12, Lot 4 POS*, Block AG, Lots 1 thru 15, Lots 17 thru 33, Lot 16 POS*, Block AH, Lots 1 thru 7, Lots 9 thru 28, Lot 8 POS*, Block AJ, Lot 1 POS*, Block AL, Lot 1 POS*, Block AM, Lot 1 POS*, Block AN, Lot 1 POS*, Block AP, Lot 1 POS*, Block AQ, Lot 1 POS*, Block AR

177.98 ACRES
 AN ADDITION TO THE CITY OF FORT WORTH,
 PARKER COUNTY, TEXAS
 SITUATED IN THE
 M.C. MOULTON SURVEY, ABSTRACT NO. 934,
 HEIRS OF C.H. HIGBEE SURVEY, ABSTRACT NO. 2740,
 I. & G.N. R.R. Co. SURVEY, ABSTRACT NO. 2004, I. & G.N. R.R. Co. SURVEY, ABSTRACT NO. 1996

| | |
|--|---|
| ACCT. NO.: 19003 SCH. DIST.: AL CITY: CFW MAP NO.: M-15 | OWNER Quail Valley Devco I, LLC 8401 NORTH CENTRAL EXPRESSWAY SUITE 350, DALLAS, TEXAS 75225 PHONE: (214) 292-3410 FAX: (214) 292-3411 |
| | PREPARED BY: HUITT-ZOLLARS Huitt-Zollars, Inc. Dallas 1717 McKinney Avenue, Suite 1400, Dallas, TX 75202 Phone (214) 871-3311 Fax (214) 871-0757 |
| D 756 | |
| COUNTY RECORDING INFORMATION JULY 2017 | |
| SHEET 7 OF 14 | |