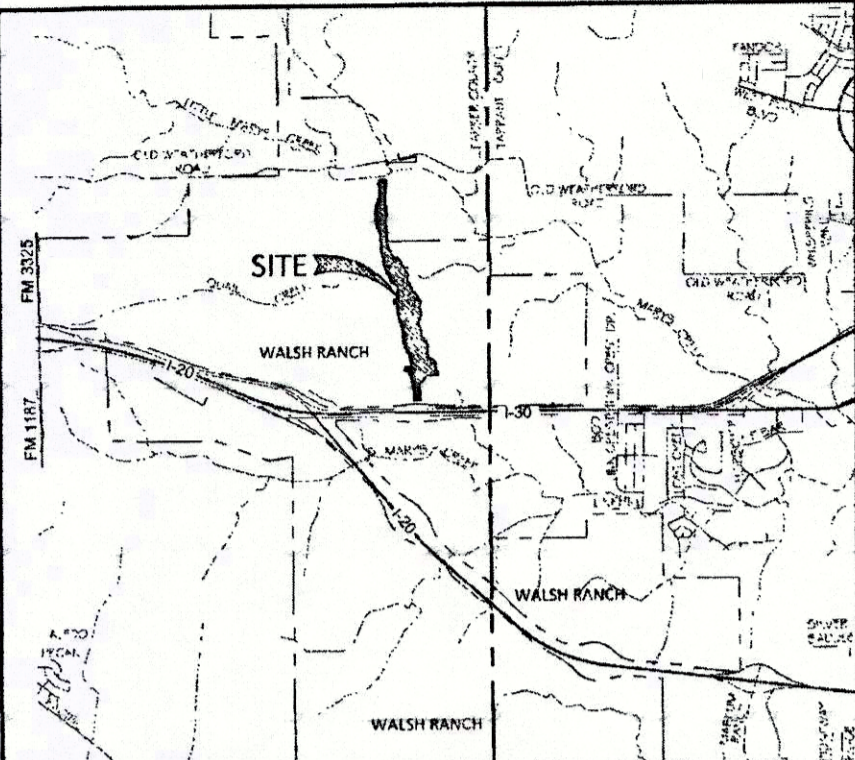
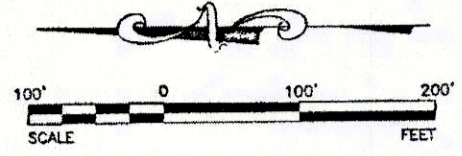
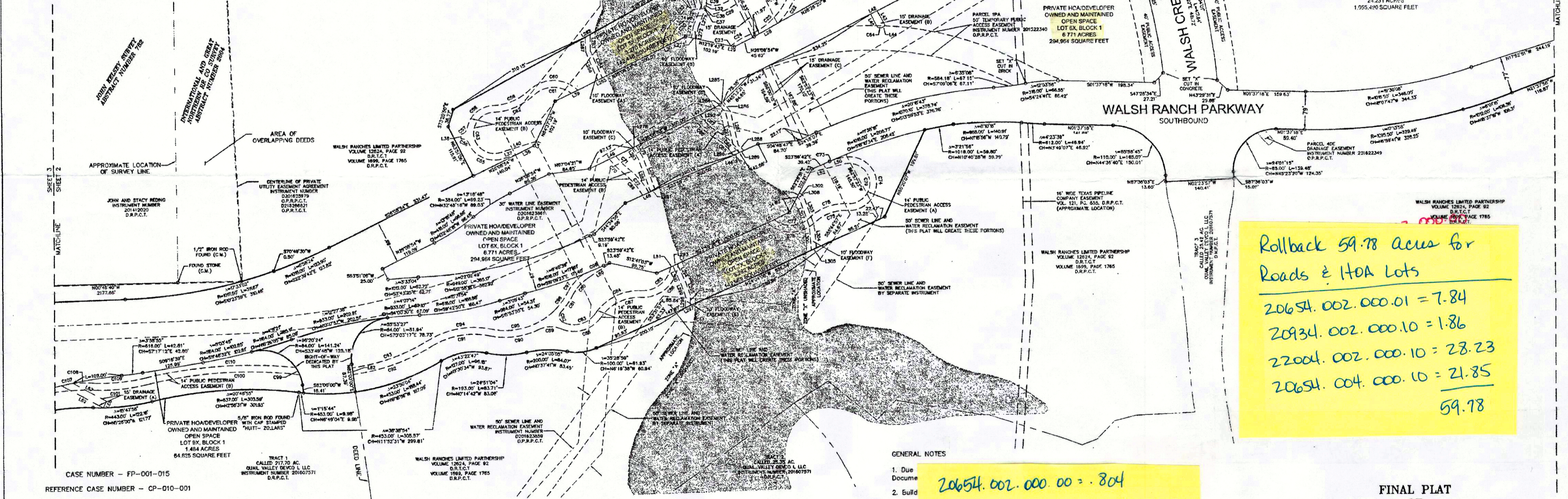


D637



VICINITY MAP
NOT TO SCALE



Rollback 59.78 acres for
Roads & HOA Lots

20654.002.000.01	= 7.84
20934.002.000.10	= 1.86
22004.002.000.10	= 28.23
20654.004.000.10	= 21.85
59.78	

GENERAL NOTES

1. Due Document
 2. Build
 3. Basis observation shown here
 4. Accor Unincorp Revised Zone "A" is in this plat
 5. All pr ASSOC.
 6. Refer
 7. Refer
- 20654.002.000.00 = .804
 20654.001.001.00 = .024 STATE
 20654.001.002.00 = .866 "
 20654.002.001.00 = .984 "
 INTERSTATE = 30.62
93.178

LEGEND

- D.R.P.C.T. = Deed Records of Parker County, Texas
- D.R.T.C.T. = Deed Records of Tarrant County, Texas
- O.P.R.T.C.T. = Official Public Records of Tarrant County, Texas
- O.P.R.P.C.T. = Official Public Records of Parker County, Texas

FINAL PLAT
OF
LOTS 1X THRU 10X, BLOCK 1
AND
WALSH RANCH PARKWAY
RIGHT-OF-WAY
WALSH RANCH

an addition to the City of Fort Worth, Parker County, Texas, situated in the Houston Top & Brazoria RR Survey, Abstract Number 654, the International & Great Northern RR Co Survey, Abstract Number 2004, and the M.C. Moulton Survey, Abstract Number 934

PLAT PREPARED OCTOBER, 2016

THIS PLAT FILED IN DOCUMENT NO. CP-010-001 / PP-010-007 DATE: _____ Sheet 2 of 5

550 Bailey Avenue • Suite 400 • Fort Worth, Texas 76107
Tel: 817.335.1121 • Fax: 817.335.7437

OWNER:
WALSH RANCHES LIMITED PARTNERSHIP
C. MALCOLM LOUDEN
500 W. 7TH STREET, SUITE 1007
FORT WORTH, TEXAS 76102-4773
PHONE: (817) 335-3741
FAX: (817) 338-4844

ENGINEER/SURVEYOR:
DUNAWAY ASSOCIATES, L.P.
550 BAILEY AVENUE, SUITE 400
FORT WORTH, TEXAS 76107
PHONE: (817) 335-1121
FAX: (817) 335-7437

FP-01-015