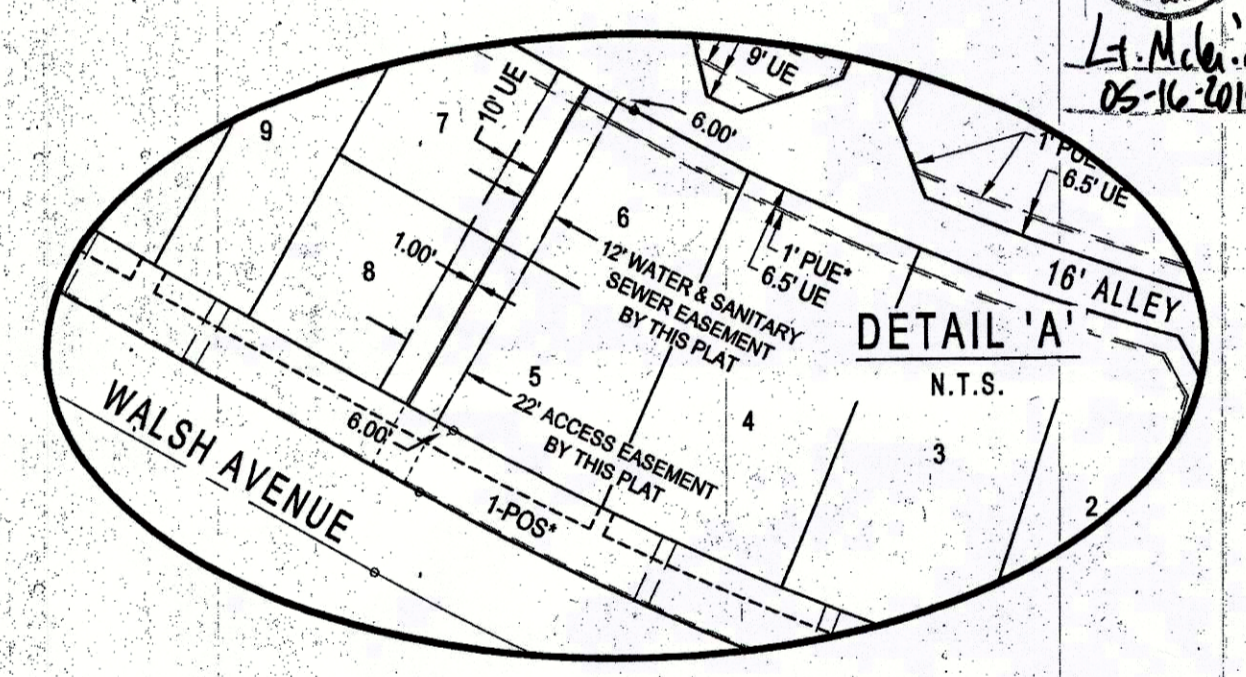
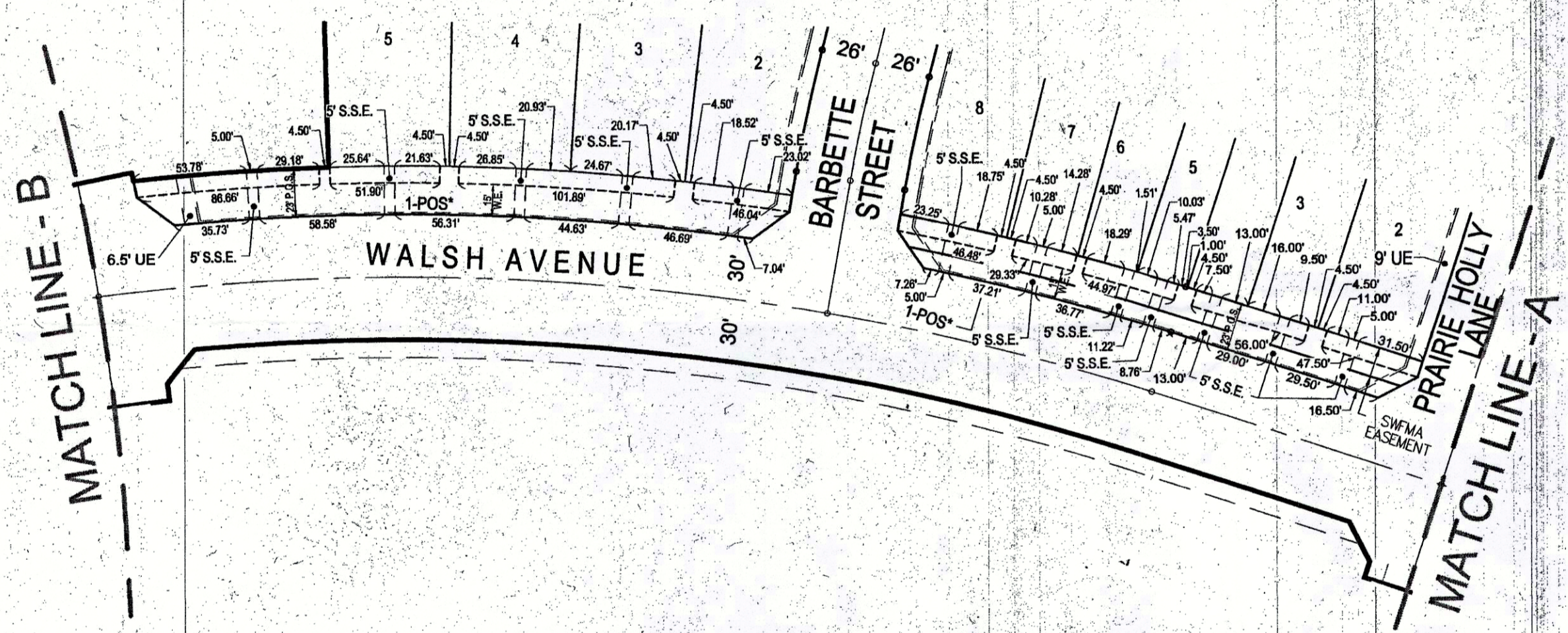
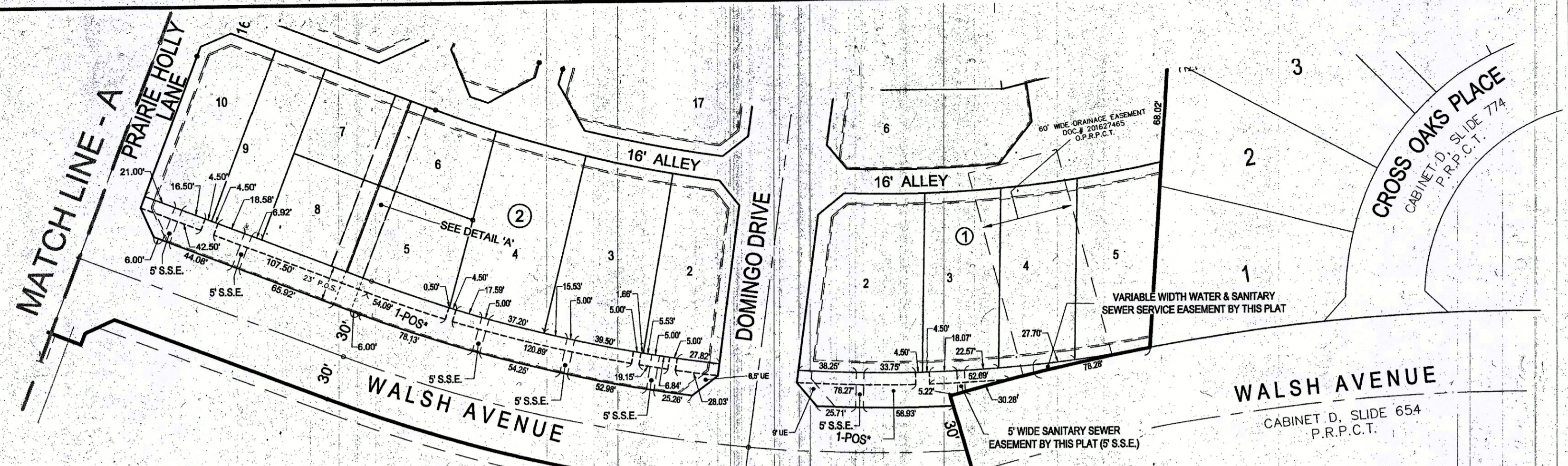
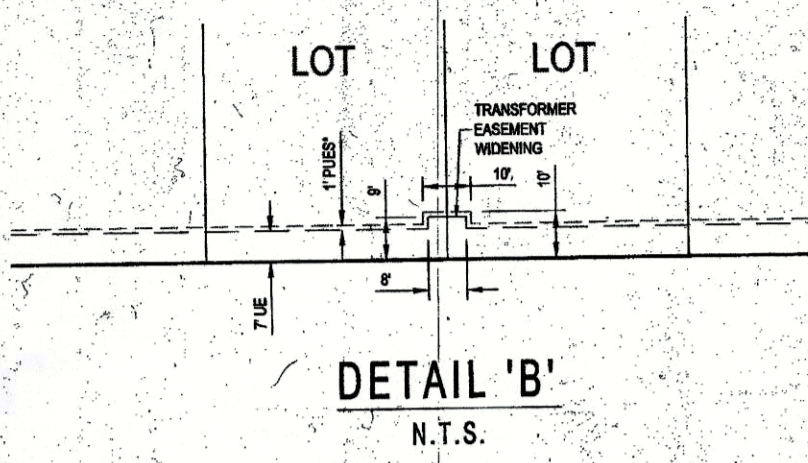


DETAIL: WATER EASEMENTS & SANITARY SEWER EASEMENTS ALONG WALSH AVENUE.



Li. McClain
05-16-2015

FINAL PLAT
WALSH RANCH - QUAIL VALLEY

- Lots 1 thru 10, Block 1,
- Lots 1 thru 18, Block 2,
- Lots 1 thru 23, Block 3,
- Lots 1 thru 9, Block 4,
- Lots 1 thru 4, Block 5,
- Lots 1 thru 5, Block 6,
- Lots 22 thru 31, Block 6,
- Lot 1, Block 47

21.09 ACRES
AN ADDITION TO THE CITY OF FORT WORTH,
PARKER COUNTY, TEXAS
SITUATED IN THE
I. & G.N. R.R. CO. SURVEY ABSTRACT No. 1996

ACCT. NO.: 3004
SCH. DIST.: PL
CITY: CEW
MAP NO.: ML

21996.001.000.80

ACCT. NO.: _____ SCH. DIST.: _____ CITY: _____ MAP NO.: _____	OWNERS QUAIL VALLEY DEVCO II, LLC 8401 NORTH CENTRAL EXPRESSWAY SUITE 350, DALLAS, TEXAS 75225 PHONE: (214) 292-3410 FAX: (214) 292-3411		WALSH RANCHES L.P. 500 W. 7TH STREET SUITE 1007, FORT WORTH, TEXAS 76102 PHONE: (817) 335-3741		
	PREPARED BY: HUITT-ZOLLARS Huitt-Zollars, Inc. Dallas 1717 McKinney Avenue, Suite 1400, Dallas, TX 75202 Phone (214) 871-3311 Fax (214) 871-0757				
E-294		APRIL 2019		SHEET 2 OF 4	

DWG: \\HZZDALLAS\tdak3\Survey\30306100-Walsh Ranch\02-Quail Valley\PHASE 3 -Planning Area\1\plans\dwg\1\3D-WR-PA-2-PH-A-FINAL PLAT.dwg USER: bcole
 DATE: Apr 19, 2019 3:03pm XREFS: _306124_Prop_Base_Lot_Layout_306124_Prop_GRAD_2D Grading_C3D-WR-PA-2-PH-A-FINAL PLAT 18x24-BD SURVEYLINES

