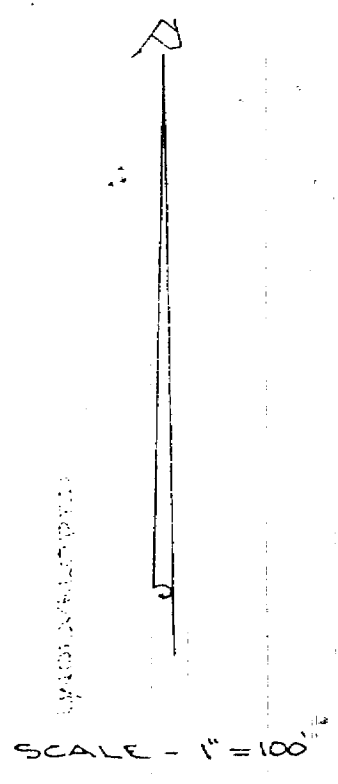
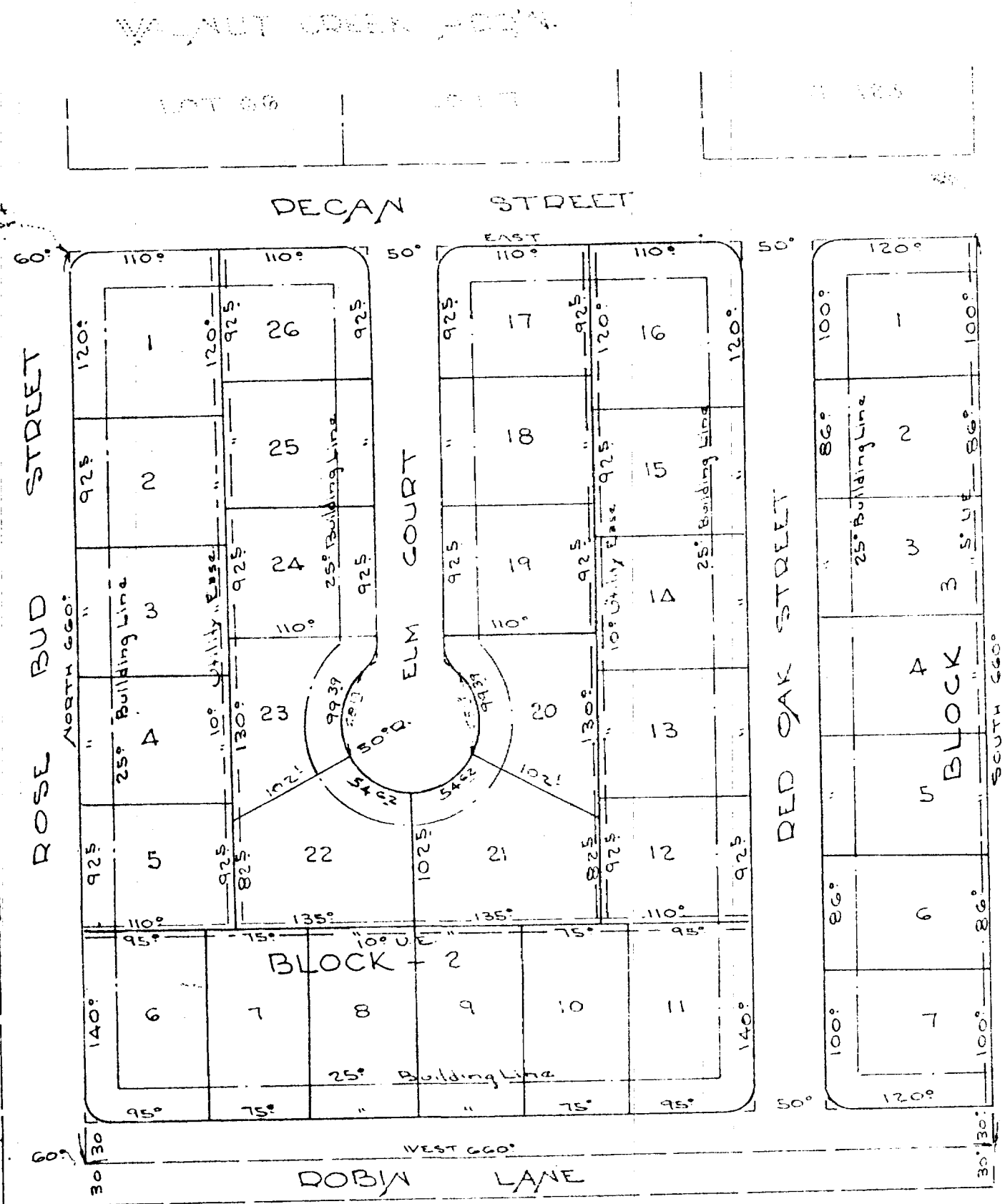


338/609

1030 ft. South & 404 ft. East of the N.E. cor. of the W.T. Axt. Sur.

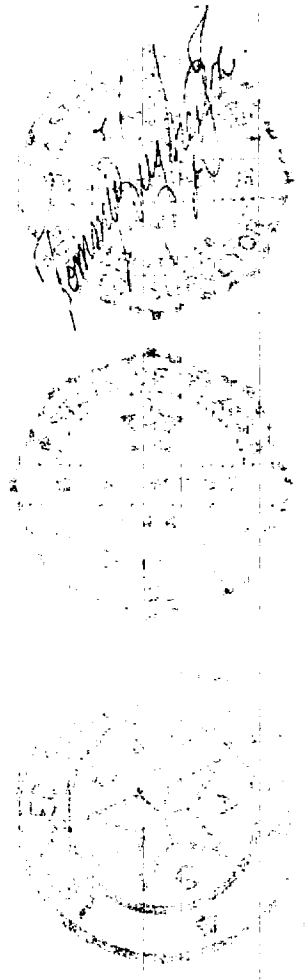


APPROVED BY
 THE BOARD OF ALDERMEN
 OF THE CITY OF AZLE
 PARKER CO., TEXAS
 BY *Jay W. Strickling, Mayor*
 BY *Thos. Orela Gilley, Jr. City Sec.*
 DATE *January 28-1961*

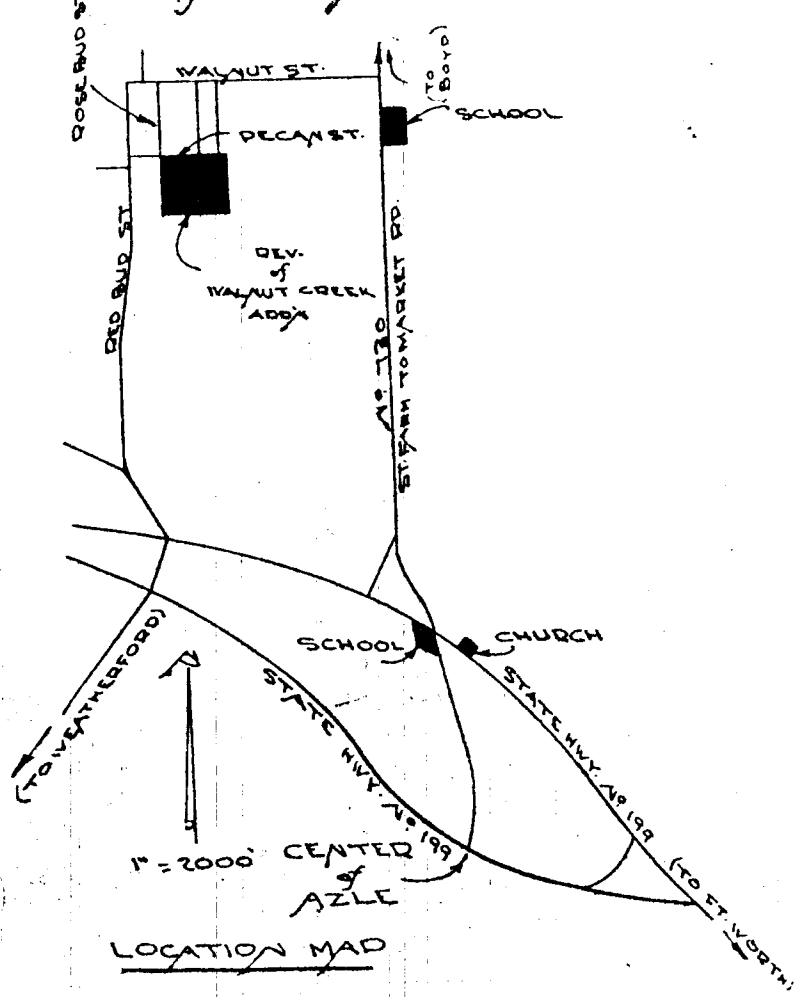
UNDEVELOPED

LOTS 1 THRU 26, BLK. 2 &
 LOTS 1 THRU 7, BLK. 3
 BEING A REVISION OF
 LOTS 72 THRU 122
 WALNUT CREEK ADDN.
 TO THE CITY OF AZLE,
 PARKER CO., TEXAS
 BEING A PORTION OF THE
 J. V. SMOCK SUR. ABST.
 N° 2267 PARKER CO.
 TEXAS

COMMISSIONERS COURT OF
 PARKER CO. TEXAS
 APPROVED
 DATE *December 13, 1960*
 BY *J. G. Lamb*
 BY *A. W. Wallas*
George Isbell
J. S. McLaughlin



WEST SURVEYING CO.
 LICENSED STATE LAND SURVEYOR
 & REGISTERED PUBLIC SURVEYOR
 109 1/2 Main St. Ph. ED 5948
 FT. WORTH, TEX.
 I, *George Isbell* do hereby
 certify that this map is
 true & correct as surveyed
 on the ground.
 DATE *Dec 1960*



LOCATION MAP