

APPROVED BY
COMMISSIONERS COURT
PARKER COUNTY, TEXAS

WIT-HAVEN ADDITION

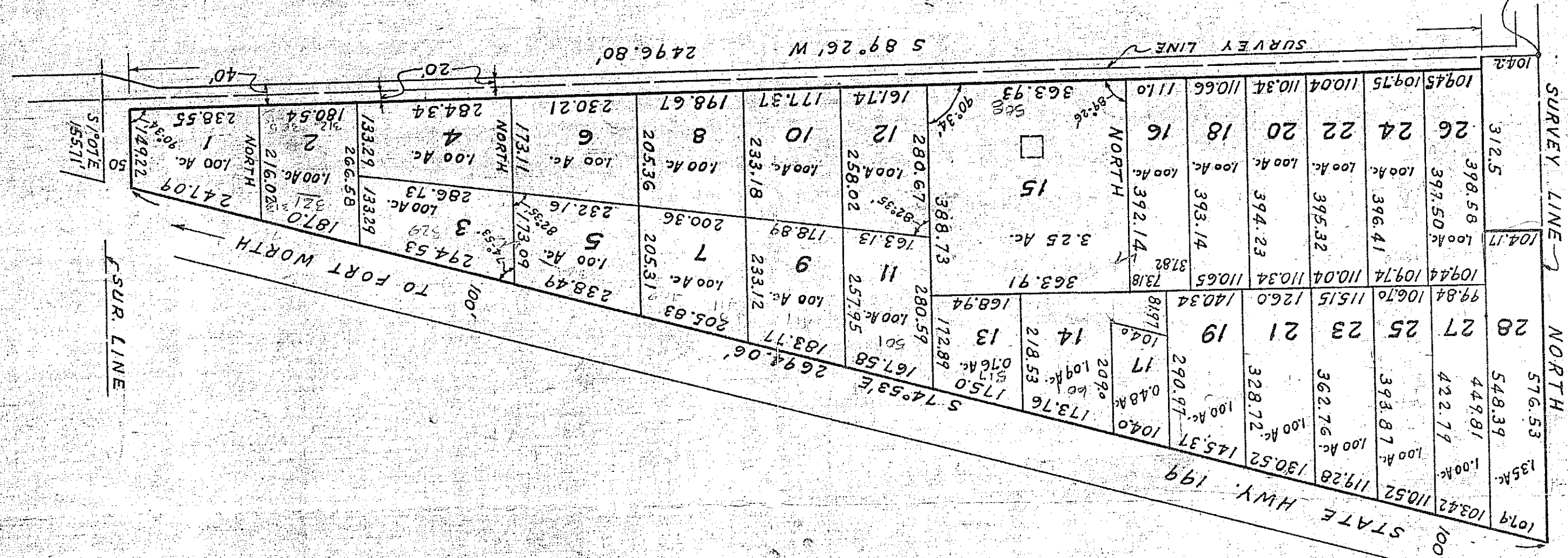
TO THE TOWN OF SPRINGTOWN

PARKER COUNTY, TEXAS

A SUBDIVISION OF A 30 ACRE TRACT
IN THE B B B & C SURVEY

L.C. McANLIES
ENGINEER

SCALE: 1" = 200'



M. LEONARD SUR

L. LEONARD SURVEY

S.W. COR. B B B & C SUR.
N.W. COR. L. LEONARD SUR.