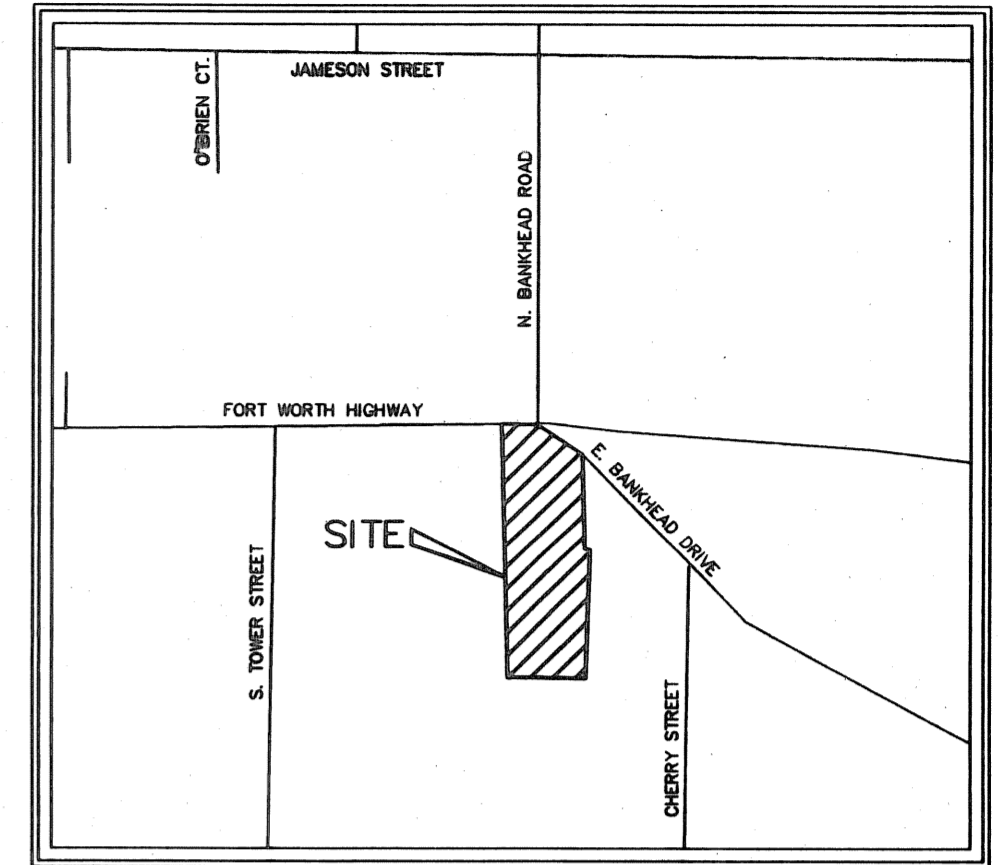


Doc# 684144
Book 2845 Page 984

Doc# 684144 Fees: \$70.00
07/01/2008 10:26AM # Pages 2
Filed & Recorded in Official Records of
PARKER COUNTY, TEXAS

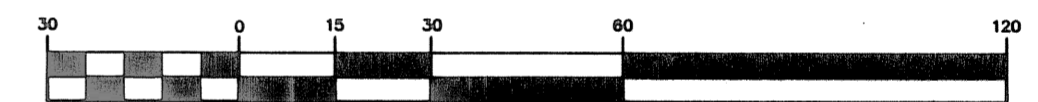
C698



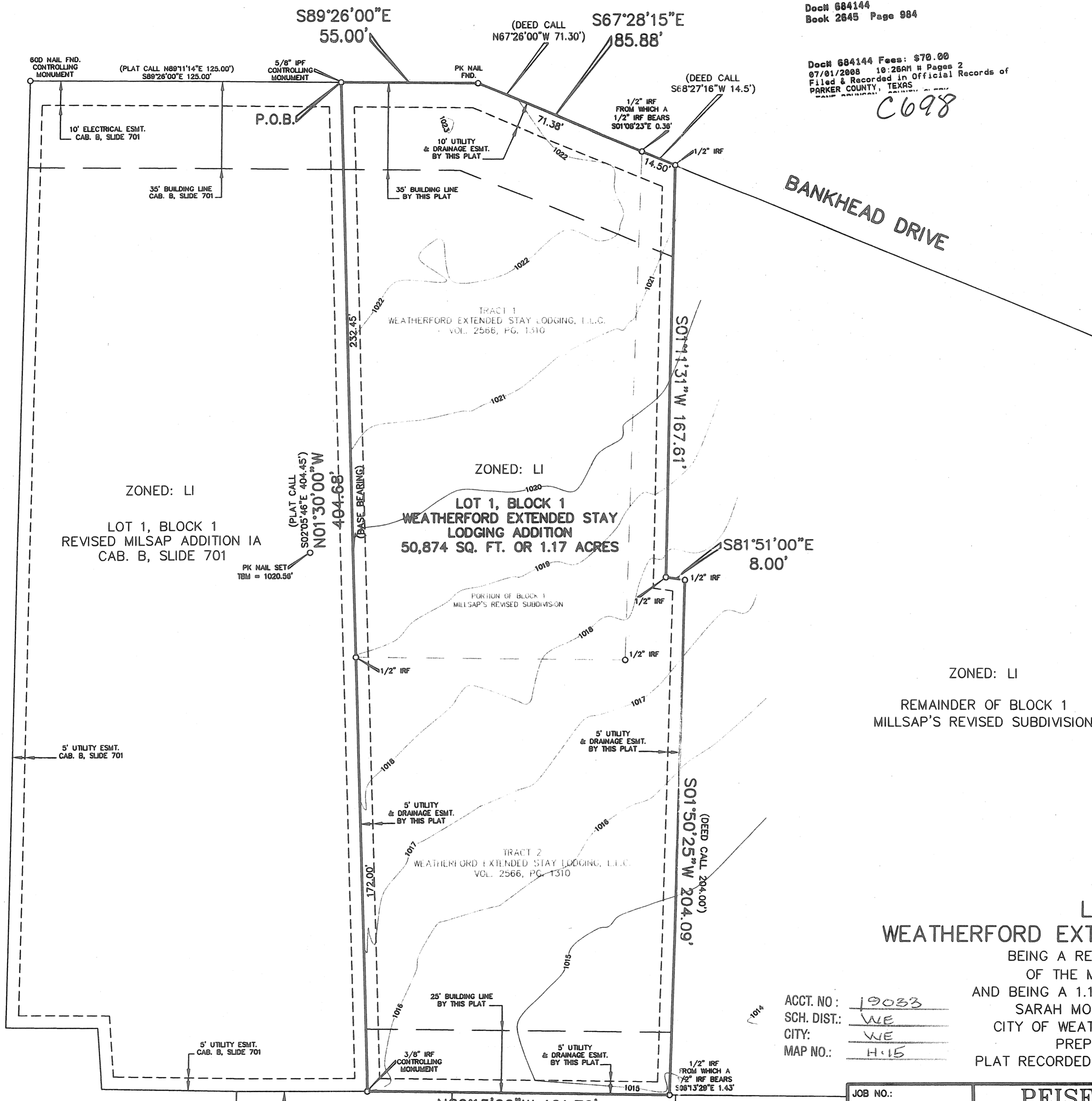
VICINITY MAP
NOT TO SCALE



GRAPHIC SCALE



(IN FEET)
1 inch = 30 ft.



ZONED: LI
REMAINDER OF BLOCK 1
MILLSAP'S REVISED SUBDIVISION

FINAL PLAT
LOT 1, BLOCK 1
WEATHERFORD EXTENDED STAY LODGING ADDITION

BEING A REPLAT OF A PORTION OF BLOCK 1
OF THE MILLSAP'S REVISED SUBDIVISION
AND BEING A 1.17 ACRE TRACT OF LAND OUT OF THE
SARAH MONK SURVEY, ABSTRACT NO. 906
CITY OF WEATHERFORD, PARKER COUNTY, TEXAS
PREPARED NOVEMBER 14, 2007
PLAT RECORDED IN CABINET _____, SLIDE _____

ACCT. NO.: 19033
SCH. DIST.: WE
CITY: WE
MAP NO.: H-15

Owner:
Weatherford Extended Stay Lodging, L.L.C.
3135 East John Carpenter Freeway
Irving, Texas 75062
972-898-8985 (O)
Contact: Ms. Pinke Patel (Manager)

LOT 9, BLOCK 1 PRINCE AND PARK ADDITION
LOT 10, BLOCK 1 PRINCE AND PARK ADDITION
LOT 11, BLOCK 1 PRINCE AND PARK ADDITION

JOB NO.:	P-4144P
DATE:	11/14/2007
REV:	12/03/2007
REV:	02/08/2008
SCALE:	1" = 30'
DRAWN BY:	C.A.

PEISER SURVEYING CO.
www.peisersurveying.com

623 E. DALLAS ROAD
GRAPEVINE, TEXAS 76051
817-481-1806 (O)
817-481-1809 (F)

COMMERCIAL
RESIDENTIAL
BOUNDARIES
TOPOGRAPHY
MORTGAGE

Texas Society of Professional Surveyors
Member Since 1977