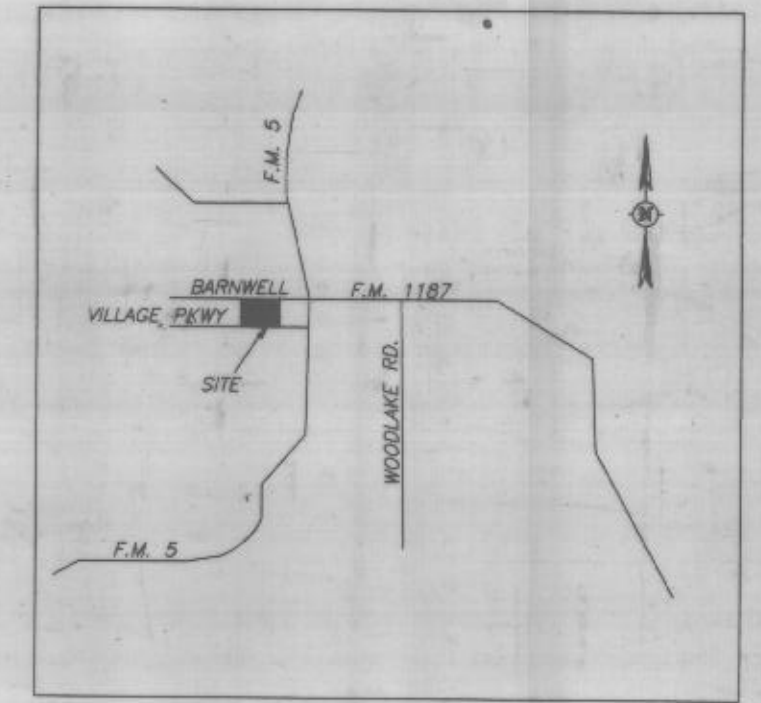


ELLEN KIRKLAND  
V. 79, P. 208

RECEIVED  
FOR  
10-10-80  
MAR 12 1989

JAMES R. PEOPLES et al  
V. 375, P. 593

CITY OF ALEDO  
V. 1565, P. 103



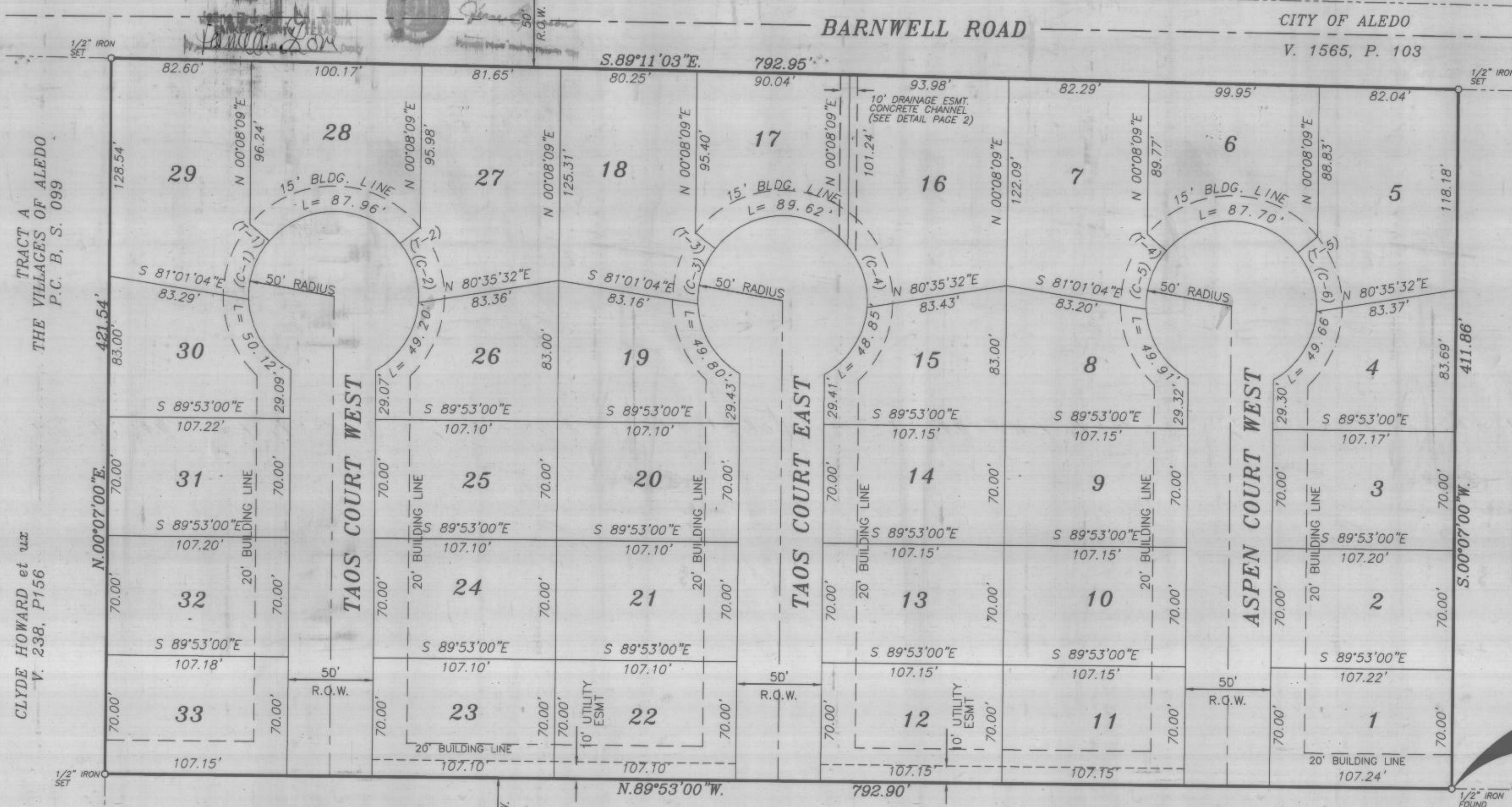
VICINITY MAP NTS

TRACT A  
THE VILLAGES OF ALEDO  
P.C. B, S. 099

COURSE	BEARING	DISTANCE
1	N 49°44'01"W	15.00'
2	N 51°03'50"E	15.00'
3	N 52°46'57"W	15.00'
4	N 49°57'55"W	15.00'
5	N 50°31'38"E	15.00'

J & F HOMES, INC.  
V. 1742, P. 1516

POINT OF BEGINNING



TRACT A  
THE VILLAGES OF ALEDO  
P.C. B, S. 099

CLYDE HOWARD et ux  
V. 238, P. 156

VILLAGE PARKWAY

34 ADAM H. MORVANT III AND MONIQUE L. MORVANT V. 1672, P. 297	TAOS CIRCLE	10 TODD A. WILSON AND MARTINE F. WILSON V. 1725, P. 793	1 RICHARD L. SAVAGE AND HOLLY M. SAVAGE V. 1736, P. 1831	TAOS CIRCLE	18 J & F HOMES, INC. V. 1738, P. 22	17 CURTIS R. PARKER AND DONNA M. PARKER V. 1728, P. 816	ASPEN CIRCLE	10 RANDY L. CAHOON AND PENNY C. CAHOON V. 1735, P. 1553	1 J & F HOMES, INC. V. 1629, P. 1336	ASPEN CIRCLE	1 J & F HOMES, INC. V. 1733, P. 1293
---	----------------	---	--	----------------	---	---	-----------------	---	--	-----------------	--

CURVE	RADIUS	TANGENT	LENGTH	DELTA	DEGREE	CHORD	CH. BEARING
1	50.00'	19.54'	37.26'	42°41'32"	114°35'30"	36.40'	N 18°55'13"E
2	50.00'	19.54'	37.26'	42°41'32"	114°35'30"	36.40'	S 17°35'24"E
3	50.00'	18.20'	34.92'	40°00'35"	114°35'30"	34.21'	N 17°12'46"E
4	50.00'	20.33'	38.61'	44°14'47"	114°35'30"	37.66'	S 17°57'45"E
5	50.00'	19.55'	37.27'	42°42'16"	114°35'30"	36.41'	N 18°40'57"E
6	50.00'	19.55'	37.27'	42°42'16"	114°35'30"	36.41'	S 18°07'14"E

NOTE:  
THE PURPOSE OF THIS CORRECTED PLAT IS TO CORRECT  
TYPOGRAPHICAL ERRORS IN BEARINGS AND DISTANCES ON  
THE PLAT RECORDED IN PLAT CABINET X, SLIDE X.

Corrected Plat  
Lots 1 thru 33, Block 8  
**THE VILLAGES OF ALEDO PHASE II**  
City of Aledo,  
Parker County, Texas

Being a Corrected Plat of  
The Villages of Aledo  
Phase II  
An Addition to the City of Aledo  
Parker County, Texas  
according to the revised  
plat recorded in  
Plat Cabinet B, Slide 099  
Plat Records, Parker County, Texas

MIZELL LAND SURVEYING, INC.  
513 NORTH 1187, SUITE 5  
ALEDO, TEXAS 76008  
(817) 441-6199 (817) 598-1284

I hereby certify that this plat is true and correct and was prepared from an actual survey of the property made under my supervision on the ground.  
*Brent A. Mizell*  
BRENT A. MIZELL  
REGISTERED PROFESSIONAL LAND SURVEYOR  
TEXAS REGISTRATION NO. 1967  
JANUARY 7, 1999



WASTELINE  
ENGINEERING, INC.  
P.O. BOX 3441 PH. 817-877-4242  
FORT WORTH, TEXAS