

FIRE LANE CURVE DATA table with columns: CURVE, LENGTH, CHORD BRG, RADIUS, Delta. Contains curves C1 through C16.

FIRE LANE CURVE DATA table with columns: CURVE, LENGTH, CHORD BRG, RADIUS, Delta. Contains curves C17 through C32.

FIRE LANE CURVE DATA table with columns: CURVE, LENGTH, CHORD BRG, RADIUS, Delta. Contains curves C33 through C48.

FINAL PLAT

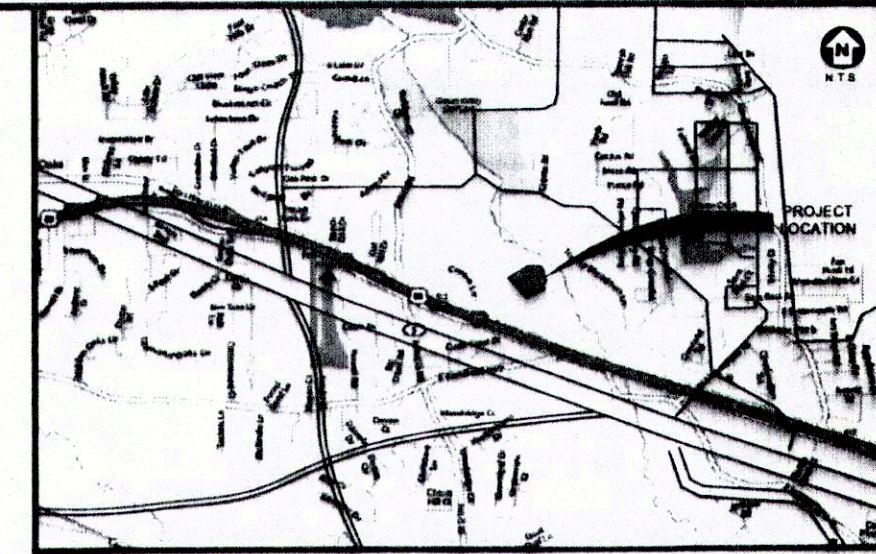
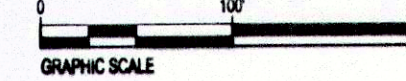
On the 26 day of September, 2014, this minor plat was was duly approved by the Director of Development Services of the City of Willow Park, Texas.

Signed: [Signature] City Administrator

Attest: [Signature] City Secretary

Signed: [Signature] Mayor

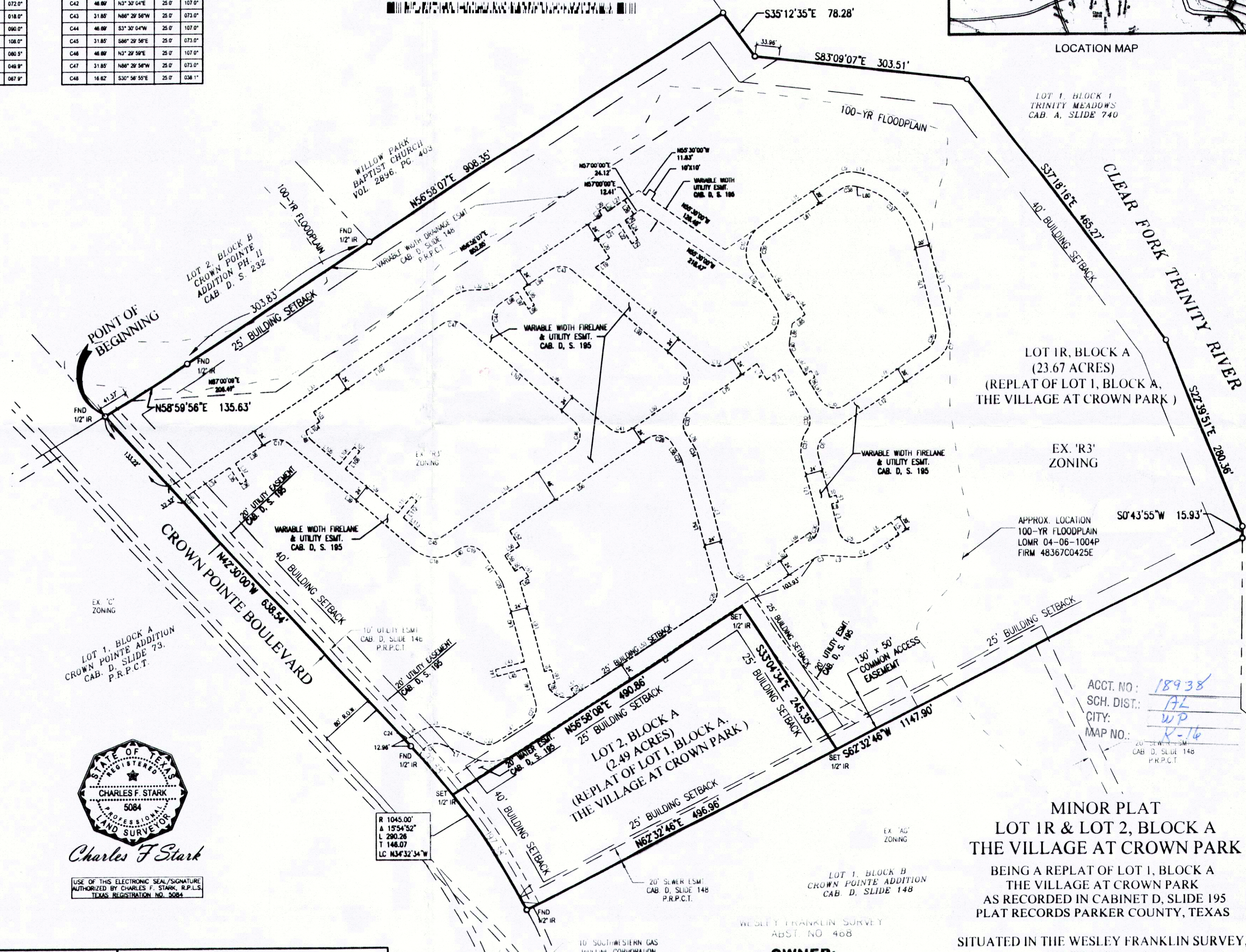
201419597 PLAT Total Pages: 1



LOCATION MAP

FIRE LANE LINE DATA table with columns: LINE, BEARING, LENGTH. Contains lines L1 through L86.

FIRE LANE LINE DATA table with columns: LINE, BEARING, LENGTH. Contains lines L87 through L113.



LOT 1, BLOCK 1 TRINITY MEADOWS CAB. A, SLIDE 740

LOT 1R, BLOCK A (23.67 ACRES) (REPLAT OF LOT 1, BLOCK A, THE VILLAGE AT CROWN PARK)

EX. 'R3' ZONING

APPROX. LOCATION LOMR 04-06-1004P FIRM 48367C0425E

ACCT. NO.: 18938, SCH. DIST.: 7L, CITY: WP, MAP NO.: K-16

MINOR PLAT LOT 1R & LOT 2, BLOCK A THE VILLAGE AT CROWN PARK

BEING A REPLAT OF LOT 1, BLOCK A THE VILLAGE AT CROWN PARK AS RECORDED IN CABINET D, SLIDE 195 PLAT RECORDS PARKER COUNTY, TEXAS

SITUATED IN THE WESLEY FRANKLIN SURVEY, ABSTRACT NO. 468

WESLEY FRANKLIN SURVEY ABST. NO. 468

OWNER: VILLAGE AT CROWN PARK, LLC 10235 W. INTERSTATE HWY. 20 EASTLAND TX 76448 PH: (817) 819-2574



Charles F Stark

USE OF THIS ELECTRONIC SEAL/SIGNATURE AUTHORIZED BY CHARLES F. STARK, R.L.S., TEXAS REGISTRATION NO. 5084

6221 Southwest Boulevard, Suite 100 Fort Worth, Texas 76132 (O) 817.231.8100 (F) 817.231.8144 Texas Registered Engineering Firm F-10998 www.barronstark.com

FILED FOR RECORD PARKER COUNTY, TEXAS PLAT RECORD CABINET D, SLIDE 363 DATE

Barron-Stark-Swift Consulting Engineers logo with tagline 'Together'.