

FIELD NOTES

FIELD NOTES of a 131.65 Acre tract of land being a part of the G.H. Boyles Survey, Abstract 173; the J.S. Holman Survey, Abstract 680 and the I. & G.N.R.R. Company Survey 4, Block 9, Abstract 1780, Parker County, Texas and being more fully described by notes and bearings as follows:  
 BEGINNING at a steel rod, said point being the N.E. Corner of Tract 4, Trinity Ranch Subdivision as recorded in Plat Cabinet A, Slide 852, Plat Records, Parker County, Texas;  
 THENCE, with the N.E. of the above mentioned Tract 4, S 89 deg. 57 min. 02 sec. E., 210.65 ft. to a steel rod for a corner;  
 THENCE N 00 deg. 30 min. 20 sec. E., 80.0 ft. to a steel rod for a corner;  
 THENCE N 89 deg. 57 min. 02 sec. E., 521.87 ft. to a steel rod for a corner;  
 THENCE N 00 deg. 30 min. 22 sec. E., 874.95 ft. to a steel rod for a corner;  
 THENCE N 89 deg. 57 min. 02 sec. E., 991.52 ft. to a steel rod for a corner;  
 THENCE S 00 deg. 02 min. 58 sec. E., 874.91 ft. to a steel rod in the N.E. of Trinity Ranch Road for a corner;  
 THENCE, with the W.E. of the above mentioned Trinity Ranch Road N 89 deg. 57 min. 02 sec. E., 620.0 ft. to a steel rod for a corner;  
 THENCE N 00 deg. 02 min. 58 sec. W., 646.00 ft. to a steel rod for a corner;  
 THENCE N 89 deg. 57 min. 02 sec. E., 1331.20 ft. to a steel rod for a corner;  
 THENCE, with the general line of a fence S 00 deg. 15 min. 14 sec. W., 2113.30 ft. to a fence post for a corner;  
 THENCE, with the general line of a fence S 89 deg. 29 min. 05 sec. W., 1439.05 ft. and N 89 deg. 29 min. 10 sec. W., 1226.51 ft. to a steel rod for a corner;  
 THENCE N 00 deg. 30 min. 22 sec. E., 1457.33 ft. to the place of beginning and containing 131.65 Acres of land, more or less.

\*\*\* DEDICATION \*\*\*

THE STATE OF TEXAS }  
 COUNTY OF PARKER }  
 WHEREFORE KNOWN ALL MEN BY THESE PRESENTS:  
 THAT I (we), TEXAS BANK, the owner(s) of the afore described tract of land(s), do hereby dedicate the foregoing plat to be known as TRINITY RANCH SUBDIVISION PLAT II, an addition to Parker County, Texas and do hereby dedicate to the public to use forever the streets and easements shown thereon.  
 IN WITNESS WHEREOF THIS DEDICATION IS EXECUTED, this the 9<sup>th</sup> day of April, 1990.

Warren Bryant

THE STATE OF TEXAS }  
 COUNTY OF PARKER }  
 BEING ME, the undersigned authority, on this day personally appeared V. R. V. B. J., known to me to be the person whose name is subscribed to the foregoing instrument, and acknowledged to me that he executed the same for the purposes and consideration therein expressed, in the capacity therein stated.  
 GIVEN UNDER MY HAND AND SEAL OF OFFICE THIS the 9<sup>th</sup> day of April, 1990.

Loetta M. Houston  
 Notary Public, State of Texas  
 My Comm. Expires: 12-26-93

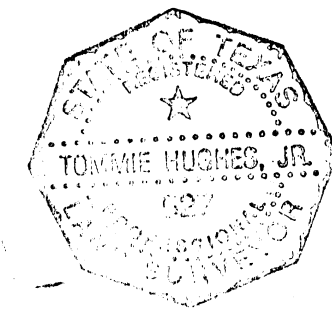
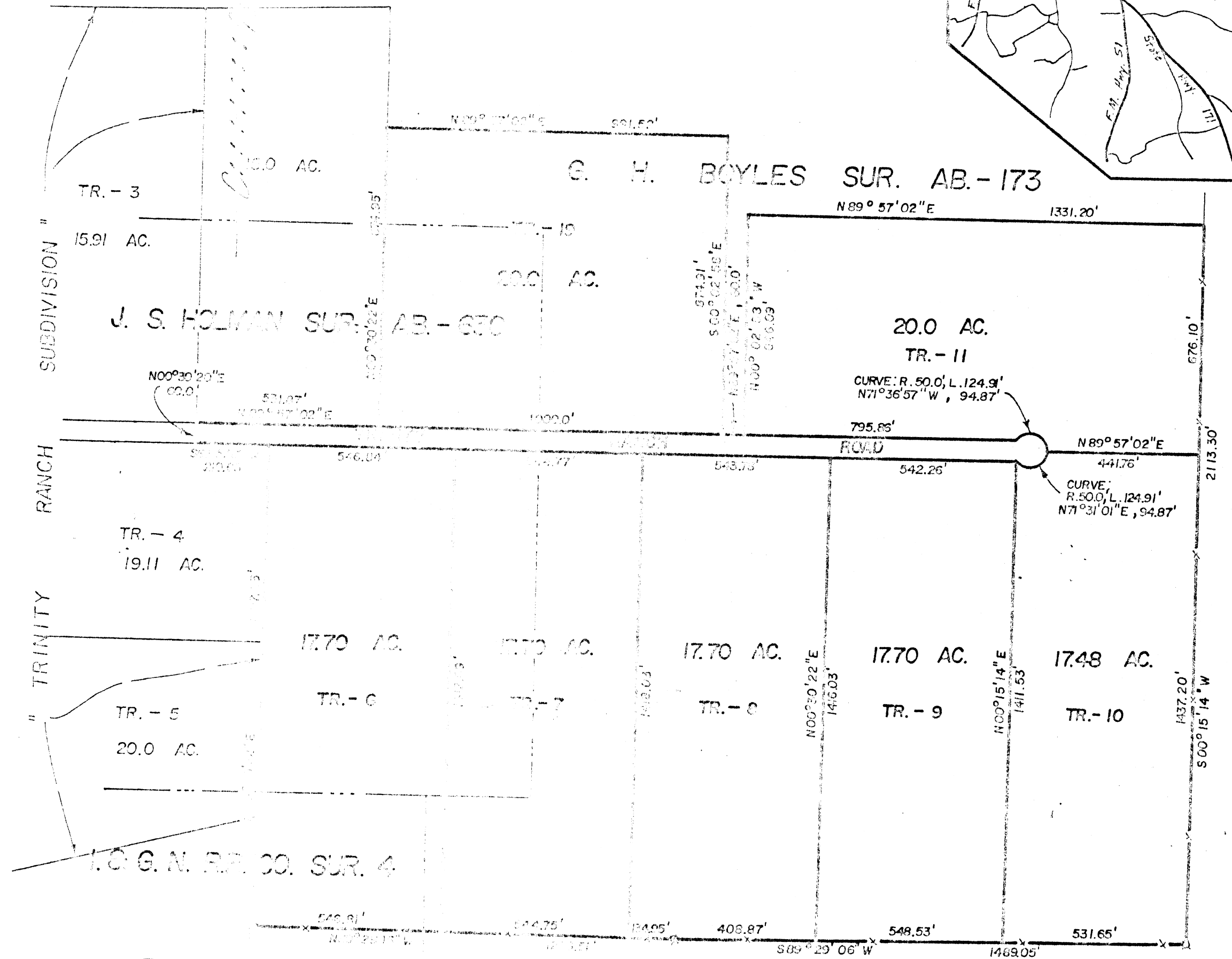
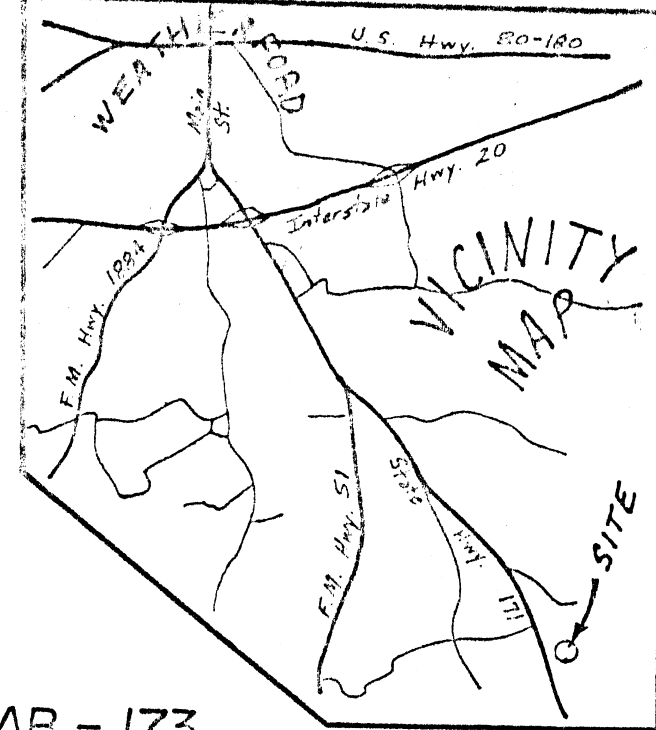
APPROVED BY THE PARKER COUNTY COMMISSIONERS, this 18<sup>th</sup> day of April, 1990.

RECEIVED BY: Wayne Wright Harold Robinson  
Massie White

PCA-185

835.00/ft

This plat or field note description is not intended to express or imply a warranty or guarantee of ownership and the certification hereon is only to the person or persons who conducted the survey.



TRINITY RANCH SUBDIVISION  
 BEING A PART OF THE G. H. BOYLES SURV. AB. - 173, THE J. S. HOLMAN SUR. AB. - 680 AND THE I. & G. N. R. R. CO. SUR. 4, BLK. - 9, WEATHERFORD, PARKER COUNTY, TEXAS

SCALE 1" = 300'  
 LEGEND  
 O IRON PIPE  
 ⊙ STEEL ROD  
 \* FENCE CORNER  
 - - - FENCE

HUGHES AND ASSOCIATES  
 LAND SURVEYING  
 CIVIL ENGINEERING  
 LAND PLANNING  
 111 E. COLUMBIA, SUITE E WEATHERFORD, TEXAS  
 OFFICE 594-9374 OR 441-7619 HOME 594-2165

I certify that this map was prepared from field notes of an actual survey made by me or under my supervision and to the best of my knowledge and belief represents said survey.