

BOUNDARY LINE TABLE

LINE	BEARING	DISTANCE
B1	N 66°55'33" W	356.22'
B2	N 35°07'07" W	75.46'
B3	N 20°44'43" W	161.89'
B4	N 06°39'20" W	341.87'
B5	N 46°37'02" W	59.97'
B6	N 76°48'22" W	302.35'
B7	N 38°32'03" W	210.00'
B8	N 20°14'28" W	205.06'
B9	N 22°27'19" E	75.76'
B10	N 19°06'55" E	68.26'
B11	N 52°26'00" E	289.92'
B12	N 15°54'04" E	242.57'
B13	N 07°58'02" W	123.34'
B14	N 50°46'27" W	215.39'
B15	N 00°10'48" E	261.71'
B16	N 23°12'58" W	280.36'
B37	S 44°36'33" W	363.88'
B38	S 20°01'39" W	285.41'
B39	S 12°53'49" E	180.17'
B40	S 30°25'58" E	244.61'
B41	S 43°10'50" E	181.51'
B42	N 85°58'58" E	205.15'
B43	S 87°23'04" E	126.42'
B44	S 00°36'36" E	183.34'

ROAD LINE TABLE

LINE	BEARING	DISTANCE
RL1	N 49°32'56" W	72.38'
RL2	N 30°52'24" W	46.84'
RL3	N 25°04'30" W	1033.73'
RL4	S 64°55'30" W	469.98'
RL5	S 64°55'30" W	30.02'
RL6	S 45°32'50" W	74.97'
RL7	N 52°26'00" W	50.49'
RL8	N 45°32'50" E	81.98'
RL9	N 64°55'30" E	30.02'
RL10	N 64°55'30" E	469.98'
RL11	N 25°04'30" W	838.68'
RL12	N 73°08'22" W	200.00'
RL13	N 76°27'54" W	561.35'
RL14	N 16°17'07" E	66.13'
RL15	S 76°27'54" E	561.35'
RL16	S 73°08'22" E	200.00'
RL17	S 25°04'30" E	1922.41'
RL18	S 68°13'27" E	46.84'
RL19	S 49°32'56" E	70.61'
RL20	S 39°19'35" W	90.02'

ROAD CURVE TABLE

CURVE	RADIUS	ARC	CHORD	CHORD DELTA	DEGREE OF CURVE	
RC1	510.00'	217.85'	N 37°18'43" W	216.19'	24°28'26"	11°14'04"
RC2	325.00'	223.72'	S 84°38'43" W	219.33'	39°26'28"	17°37'46"
RC3	275.00'	282.31'	S 74°57'24" W	270.08'	58°49'07"	20°50'05"
RC4	325.00'	333.64'	N 74°57'24" E	319.18'	58°49'07"	17°37'46"
RC5	275.00'	189.30'	N 84°38'43" E	185.59'	39°26'28"	20°50'05"
RC6	450.00'	377.50'	N 49°06'26" W	366.53'	48°03'52"	12°43'57"
RC7	510.00'	300.99'	N 56°13'57" W	296.64'	33°48'51"	11°14'04"
RC8	450.00'	39.73'	N 37°05'36" W	39.72'	4°27'49"	11°14'04"
RC9	450.00'	326.75'	N 55°39'48" W	319.82'	41°36'12"	12°43'57"
RC10	510.00'	314.04'	N 58°49'29" W	309.10'	35°16'50"	11°14'04"
RC11	450.00'	466.13'	N 70°51'33" W	445.57'	59°20'58"	12°43'57"
RC12	510.00'	558.13'	N 69°10'56" W	530.69'	62°42'12"	11°14'04"
RC13	450.00'	73.00'	N 42°28'41" W	72.92'	9°17'41"	12°43'57"
RC14	510.00'	112.35'	S 44°08'31" E	112.13'	12°37'20"	11°14'04"
RC15	450.00'	492.47'	S 69°10'56" E	468.26'	62°42'12"	12°43'57"
RC16	510.00'	528.28'	S 70°51'33" E	504.98'	59°20'58"	11°14'04"
RC17	450.00'	277.09'	S 58°49'29" E	272.74'	35°16'50"	12°43'57"
RC18	510.00'	370.32'	S 55°39'48" E	362.24'	41°36'12"	11°14'04"
RC19	450.00'	35.06'	S 37°05'36" E	35.05'	4°27'49"	12°43'57"
RC20	450.00'	265.58'	S 56°13'57" E	261.74'	33°48'51"	12°43'57"
RC21	510.00'	427.83'	S 49°06'26" E	415.40'	48°03'52"	11°14'04"
RC22	450.00'	192.22'	S 37°18'43" E	190.76'	24°28'26"	12°43'57"
RC23	275.00'	159.24'	S 87°46'37" W	157.03'	33°10'41"	20°50'05"

I. HENDLEY SURVEY
ABSTRACT NO. 619

J. FROMAN SURVEY
ABSTRACT NO. 471

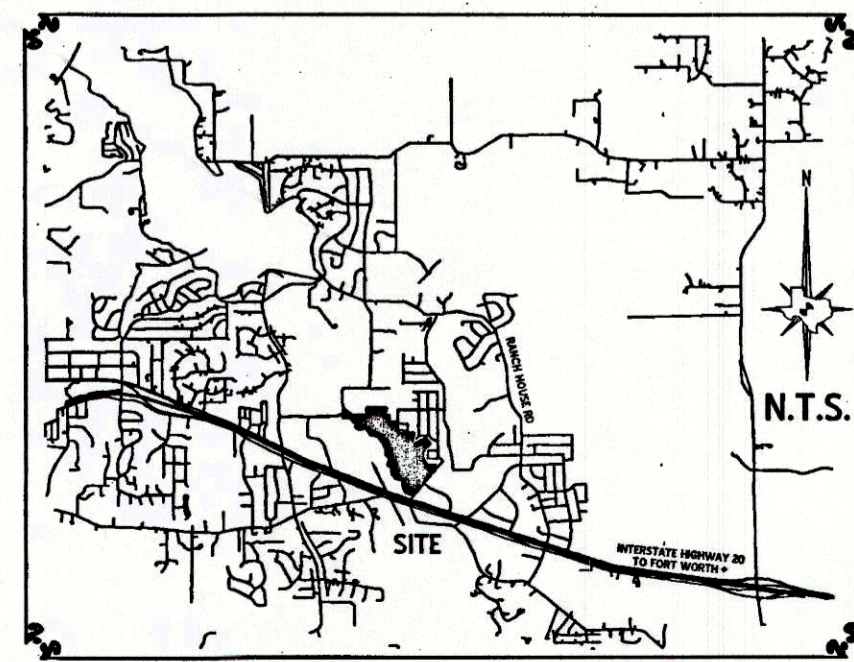
ACCT. NO.: 18355
SCH. DIST.: AL
CITY: CWP
MAP NO.: K-14

18483.001.001.00
20910.002.000.10
20910.002.014.00

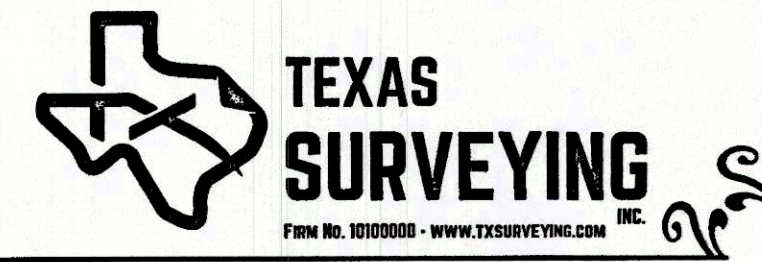
0/0

FINAL PLAT

LOTS 1-7, BLOCK 1; LOTS 1-14, BLOCK 2; LOTS 1-14, BLOCK 3; LOTS 1-13, BLOCK 4; LOTS 1-5, BLOCK 5; LOTS 1-20, BLOCK 6; LOTS 1-18, BLOCK 7, LOTS 1 & 2, BLOCK 8, LOT 1, BLOCK 9, LOT 1, BLOCK 10, LOT 1, BLOCK 11 THE RESERVES AT TRINITY AN ADDITION TO THE CITY OF WILLOW PARK, PARKER COUNTY, TEXAS BEING A 140.302 ACRES SUBDIVISION LOCATED IN WILLOW PARK, PARKER COUNTY, TEXAS AUGUST 2019



E-354



MATCH LINE

MATCH LINE

CLEAR FORK TRINITY RIVER
(APPROXIMATE CENTERLINE)

W. FRANKLIN SURVEY
ABSTRACT NO. 468

WILLOW WOOD
V. 361, P. 32

LOT 1, BLOCK 9,
22.691 Acres
988429 Sq. Ft.

KINGS GATE ROAD
(PART OF BLOCK 7B, ABSTRACT NO. 471)

LOT 2, BLOCK 1
CROWN POINTE ADDITION
PC, D, SL 148

PROPOSED 100-YR FEMA FLOODPLAIN
PER CLOM CASE NO. 18-09-3578R

*SEE PAGE 3 FOR LOT DETAIL

SURVEYOR:
KYLE RUCKER, R.P.L.S.
104 S. WALNUT STREET
WEATHERFORD, TX 76086
817-594-0400

DEVELOPER:
WPD TRINITY, LLC
17010 INTERSTATE 20
CISCO, TX 76437
817-819-2574

