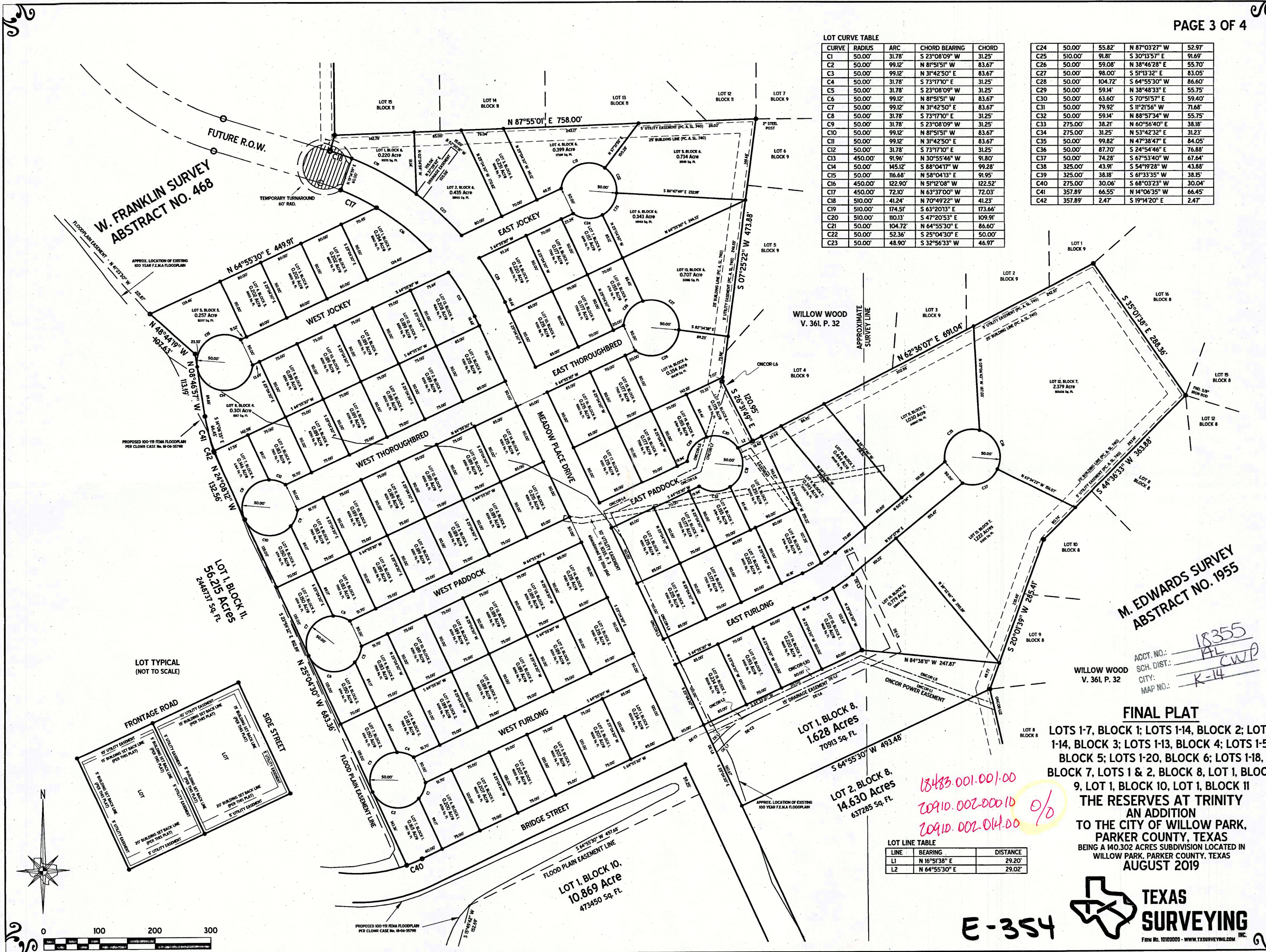


LOT CURVE TABLE

CURVE	RADIUS	ARC	CHORD BEARING	CHORD
C1	50.00'	31.78'	S 23°08'09" W	31.25'
C2	50.00'	99.12'	N 81°51'51" W	83.67'
C3	50.00'	99.12'	N 31°42'50" E	83.67'
C4	50.00'	31.78'	S 73°17'10" E	31.25'
C5	50.00'	31.78'	S 23°08'09" W	31.25'
C6	50.00'	99.12'	N 81°51'51" W	83.67'
C7	50.00'	99.12'	N 31°42'50" E	83.67'
C8	50.00'	31.78'	S 73°17'10" E	31.25'
C9	50.00'	31.78'	S 23°08'09" W	31.25'
C10	50.00'	99.12'	N 81°51'51" W	83.67'
C11	50.00'	99.12'	N 31°42'50" E	83.67'
C12	50.00'	31.78'	S 73°17'10" E	31.25'
C13	450.00'	91.96'	N 30°55'46" W	91.80'
C14	50.00'	145.12'	S 88°04'17" W	99.28'
C15	50.00'	116.68'	N 58°04'13" E	91.95'
C16	450.00'	122.90'	N 51°12'08" W	122.52'
C17	450.00'	72.10'	N 63°37'00" W	72.03'
C18	510.00'	41.24'	N 70°49'22" W	41.23'
C19	510.00'	174.51'	S 63°20'13" E	173.66'
C20	510.00'	110.13'	S 47°20'53" E	109.91'
C21	50.00'	104.72'	N 64°55'30" E	86.60'
C22	50.00'	52.36'	S 25°04'30" E	50.00'
C23	50.00'	48.90'	S 32°56'33" W	46.97'

C24	50.00'	55.82'	N 87°03'27" W	52.97'
C25	510.00'	91.81'	S 30°13'57" E	91.69'
C26	50.00'	59.08'	N 38°46'28" E	55.70'
C27	50.00'	98.00'	S 51°13'32" E	83.05'
C28	50.00'	104.72'	S 64°55'30" W	86.60'
C29	50.00'	59.14'	N 38°48'33" E	55.75'
C30	50.00'	63.60'	S 70°51'57" E	59.40'
C31	50.00'	79.92'	S 11°21'56" W	71.68'
C32	50.00'	59.14'	N 60°57'34" W	55.75'
C33	275.00'	38.21'	N 60°56'40" E	38.18'
C34	275.00'	31.25'	N 53°42'32" E	31.23'
C35	50.00'	99.82'	N 47°38'47" E	84.05'
C36	50.00'	87.70'	S 24°54'46" E	76.88'
C37	50.00'	74.28'	S 67°53'40" W	67.64'
C38	325.00'	43.91'	S 54°19'28" W	43.88'
C39	325.00'	38.18'	S 61°33'35" W	38.15'
C40	275.00'	30.06'	S 68°03'23" W	30.04'
C41	357.89'	66.55'	N 14°06'35" W	66.45'
C42	357.89'	2.47'	S 19°14'20" E	2.47'



M. EDWARDS SURVEY
ABSTRACT NO. 1955

ACCT. NO.: 18355
SCH. DIST.: AL
CITY: CWP
MAP NO.: K-14

FINAL PLAT

LOTS 1-7, BLOCK 1; LOTS 1-14, BLOCK 2; LOTS 1-14, BLOCK 3; LOTS 1-13, BLOCK 4; LOTS 1-5, BLOCK 5; LOTS 1-20, BLOCK 6; LOTS 1-18, BLOCK 7; LOTS 1 & 2, BLOCK 8; LOT 1, BLOCK 9; LOT 1, BLOCK 10; LOT 1, BLOCK 11
THE RESERVES AT TRINITY AN ADDITION TO THE CITY OF WILLOW PARK, PARKER COUNTY, TEXAS BEING A 140.302 ACRES SUBDIVISION LOCATED IN WILLOW PARK, PARKER COUNTY, TEXAS
AUGUST 2019

18483.001.001.00
20910.002.000.10
20910.002.004.00

LOT LINE TABLE

LINE	BEARING	DISTANCE
L1	N 16°51'38" E	29.20'
L2	N 64°55'30" E	29.02'

E-354

