

DOC.# 201308614  
O.P.R.P.C.T.

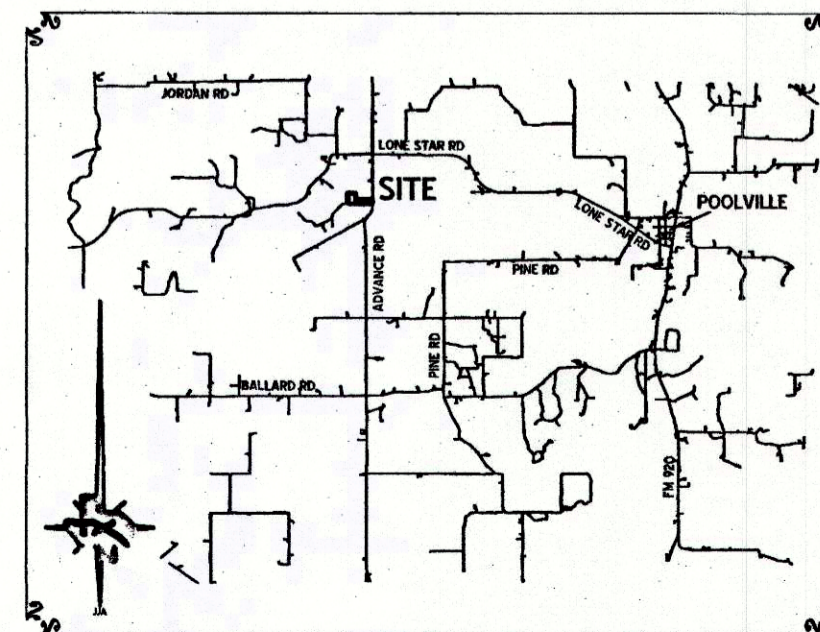
DOC.# 201724452  
O.P.R.P.C.T.

V. 1514, P. 835  
O.P.R.P.C.T.

CURVE	RADIUS	ARC LENGTH	CHORD LENGTH	CHORD BEARING	DELTA ANGLE
C1	2278.72'	197.28'	197.22'	S 89°37'18" W	4°57'38"
C2	2278.72'	32.24'	32.24'	S 87°32'48" W	0°48'39"
C3	2278.72'	165.04'	165.00'	N 89°58'23" W	4°08'59"

ACCT. NO.: 18351  
SCH. DIST.: PO  
CITY: D-5  
MAP NO.:

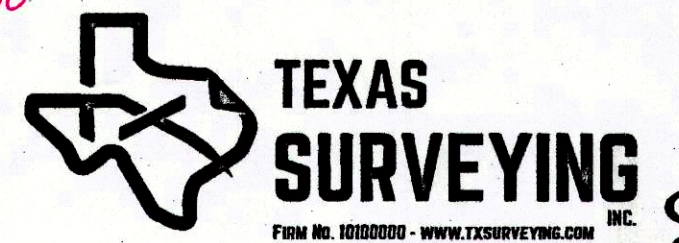
RESERVED FOR  
COUNTY CLERK



**FINAL PLAT  
OF LOTS 1-5, BLOCK 1  
THE RANCHES AT LONE TOWER**

16.333 ACRES OF LAND OUT OF THE  
I. & G.N. RR Co. SURVEY No. 6,  
ABSTRACT No. 733  
PARKER COUNTY, TEXAS.  
DECEMBER 2017

20133.003.000.50  
split



FIRM No. 1010000 - WWW.TXSURVEYING.COM

**SURVEYOR:**  
MICAH HAMILTON, R.P.L.S.  
110 PALO PINTO  
WEATHERFORD, TEXAS, 76086  
817-594-0400

**OWNER/DEVELOPER:**  
NEWBURG ENTERPRISES, LLC  
1800 SHADY GROVE  
WEATHERFORD, TX 76088  
817-598-1700

E 17

