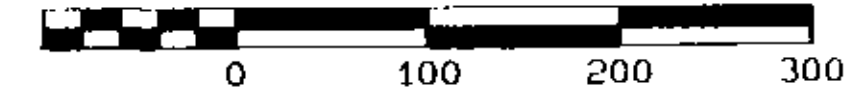


LINE	CHORD BEARING	LENGTH	RADIUS	DELTA	CHORD
L1	N13°39'17"E	140.32'			
C1	N18°29'58"E	84.55'	500.00'	9°41'21"	84.45'
C2	N05°56'14"E	384.57'	600.00'	34°48'49"	358.98'
C3	N01°17'02"W	177.77'	500.00'	20°22'16"	176.84'
C4	N02°27'19"E	112.51'	500.00'	12°53'33"	112.27'
L2	S64°42'51"E	78.53'			
C5	S75°21'04"E	111.39'	300.00'	21°16'27"	110.75'
C7	S54°53'47"E	185.83'	150.00'	70°58'51"	174.17'



GRAPHIC SCALE 1"=100'



The Lakes Drive, Whitney Court, and Buchanan Court as shown hereon constitute Lot 41 to be owned and maintained by The Lake of Aledo Homeowner's Association. Lot 41 is herein platted as a private street, emergency access and public drainage & utility easement.

REFER GENERAL NOTES 1-4, SHEET 1, FOR TYPICAL BUILDING SET BACK, UTILITY & DRAINAGE EASEMENT WIDTHS.

Doc# 614417  
Book 2476 Page 932



LT1-2-614417-1



LT2-2476-832-1

Doc# 614417 Fees: \$55.00  
10/04/2005 11:35AM # Pages 1  
Filed & Recorded in Official Records of  
PARKER COUNTY, TEXAS

APPROXIMATE LIMITS  
100-YEAR FLOODPLAIN  
PARKER COUNTY FLOOD INSURANCE RATE MAP  
PANEL 480520 0205 C & 215C  
REVISION DATE JANUARY 3, 1997  
(ZONE A, NO BASE FLOOD ELEVATIONS ESTABLISHED)

100-YEAR FLOOD PLAIN PER  
GRAHAM ASSOCIATES STUDY  
DATED MAY 2006.  
LOMR PENDING

ACCT. NO.: 14522  
SCH. DIST.: 1  
CITY: 10  
MAP NO.: 101

C. D. Alexandor  
Vol 141, Pg 189

# FINAL PLAT

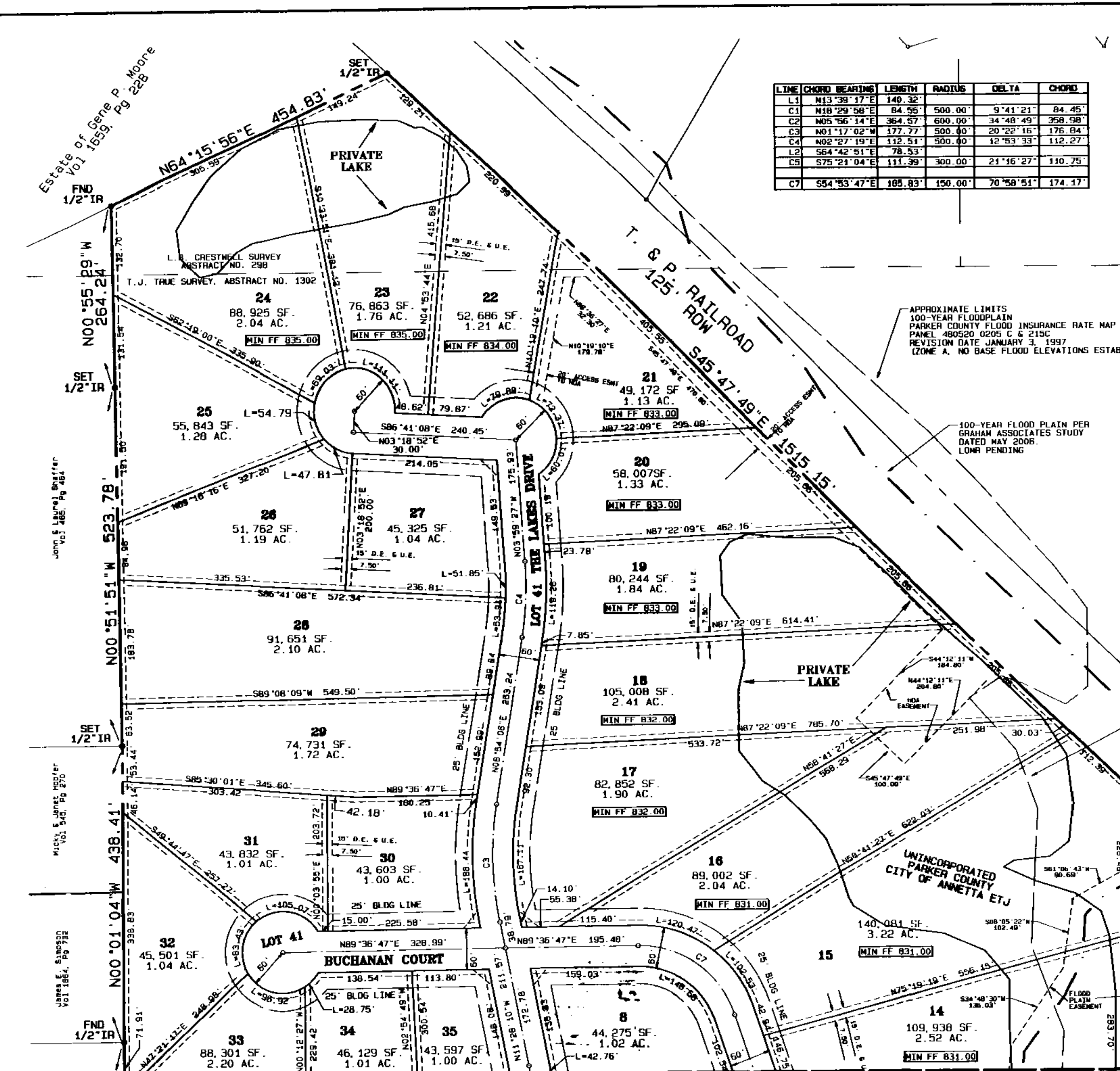
## LOTS 1-41

### THE LAKES OF ALEDO

AN ADDITION TO THE CITY OF ANNETTA AND PARKER COUNTY, TEXAS

L.B. CRESWELL SURVEY, ABSTRACT NO. 298  
C. BERG SURVEY, ABSTRACT NO. 2366  
T.J. TRUE SURVEY, ABSTRACT NO. 1302  
R.L. TURNER SURVEY, ABSTRACT NO. 2177

MATCH LINE



Estate of Gene P. Moore  
Vol 1659, Pg 228

L.B. CRESWELL SURVEY  
ABSTRACT NO. 298

T.J. TRUE SURVEY, ABSTRACT NO. 1302

John S. Leung, Engineer  
Vol 485, Pg 481

Micky S. Janet, Engineer  
Vol 940, Pg 270

James E. Simpson  
Vol 1854, Pg 732

APPROXIMATE LIMITS  
100-YEAR FLOODPLAIN  
PARKER COUNTY FLOOD INSURANCE RATE MAP  
PANEL 480520 0205 C & 215C  
REVISION DATE JANUARY 3, 1997  
(ZONE A, NO BASE FLOOD ELEVATIONS ESTABLISHED)

100-YEAR FLOOD PLAIN PER  
GRAHAM ASSOCIATES STUDY  
DATED MAY 2006.  
LOMR PENDING

APPROXIMATE LIMITS  
100-YEAR FLOODPLAIN  
PARKER COUNTY FLOOD INSURANCE RATE MAP  
PANEL 480520 0205 C & 215C  
REVISION DATE JANUARY 3, 1997  
(ZONE A, NO BASE FLOOD ELEVATIONS ESTABLISHED)

100-YEAR FLOOD PLAIN PER  
GRAHAM ASSOCIATES STUDY  
DATED MAY 2006.  
LOMR PENDING

UNINCORPORATED  
PARKER COUNTY  
CITY OF ANNETTA ETJ

500°11'03"W  
892.05'