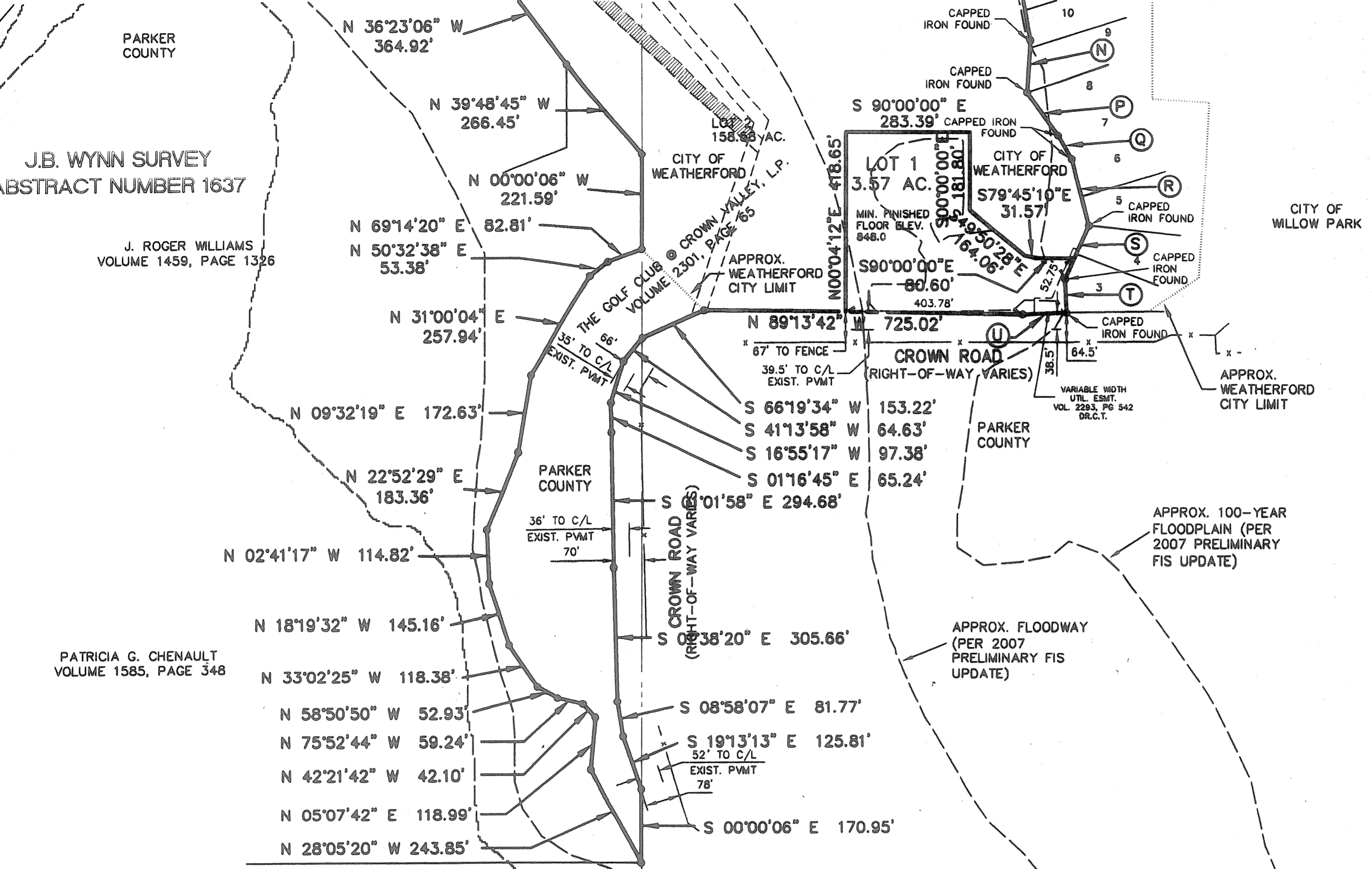
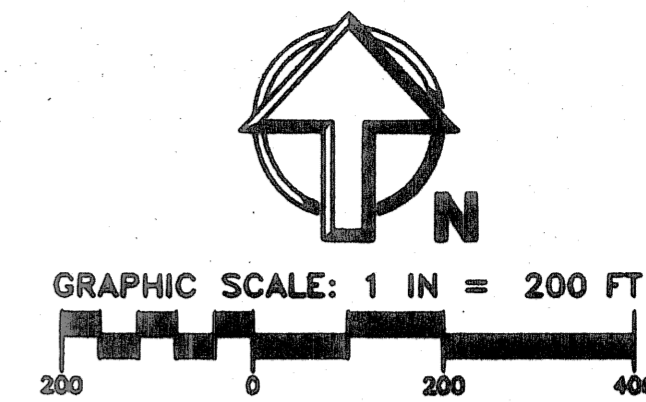


J.B. WYNN SURVEY
ABSTRACT NUMBER 1637

J. ROGER WILLIAMS
VOLUME 1459, PAGE 1326

PATRICIA G. CHENAULT
VOLUME 1585, PAGE 348



LINE	BEARING	DISTANCE
N	S 03°38'48" W	114.83'
P	S 34°36'55" E	123.95'
Q	S 29°28'08" E	62.40'
R	S 14°22'19" E	159.19'
S	S 23°11'47" W	136.44'
T	S 02°21'05" E	78.45'
U	S 87°41'53" W	99.74'

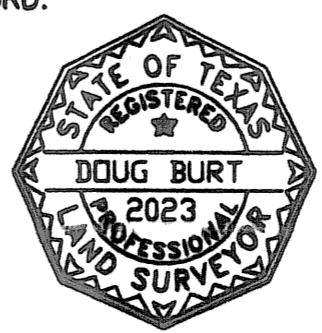
FINAL PLAT

**LOTS 1 & 2, BLOCK 1
THE GOLF CLUB
AT CROWN VALLEY**

BEING 158.92 ACRES OF LAND IN THE
C.C. MCCARVER SURVEY, ABST. NO. 908,
J.B. WYNN SURVEY, ABSTRACT NO. 1637
AND THE ANN MCCARVER SURVEY, ABSTRACT NO. 910
PARKER COUNTY, TEXAS

KNOW ALL MEN BY THESE PRESENTS:
THAT I, DOUG BURT, DO HEREBY CERTIFY THAT I PREPARED THIS PLAT FROM AN ACTUAL AND ACCURATE SURVEY OF THE LAND AND THAT THE CORNER MONUMENTS SHOWN THEREON AS "SET" WERE PROPERLY PLACED UNDER MY PERSONAL SUPERVISION IN ACCORDANCE WITH THE SUBDIVISION ORDINANCE OF THE CITY OF WEATHERFORD.

Doug Burt
DOUG BURT, R.P.L.S. NO. 2023



ACCT. NO.: 12784
SCH. DIST.: AL
CITY: WE
MAP NO.: K.15

SD Engineering, Inc.
Site Development Engineering
PO Box 1357 Aledo, TX 76008-1357
(817) 441-6400 Fax (817) 441-6086
www.sd-engineering.com