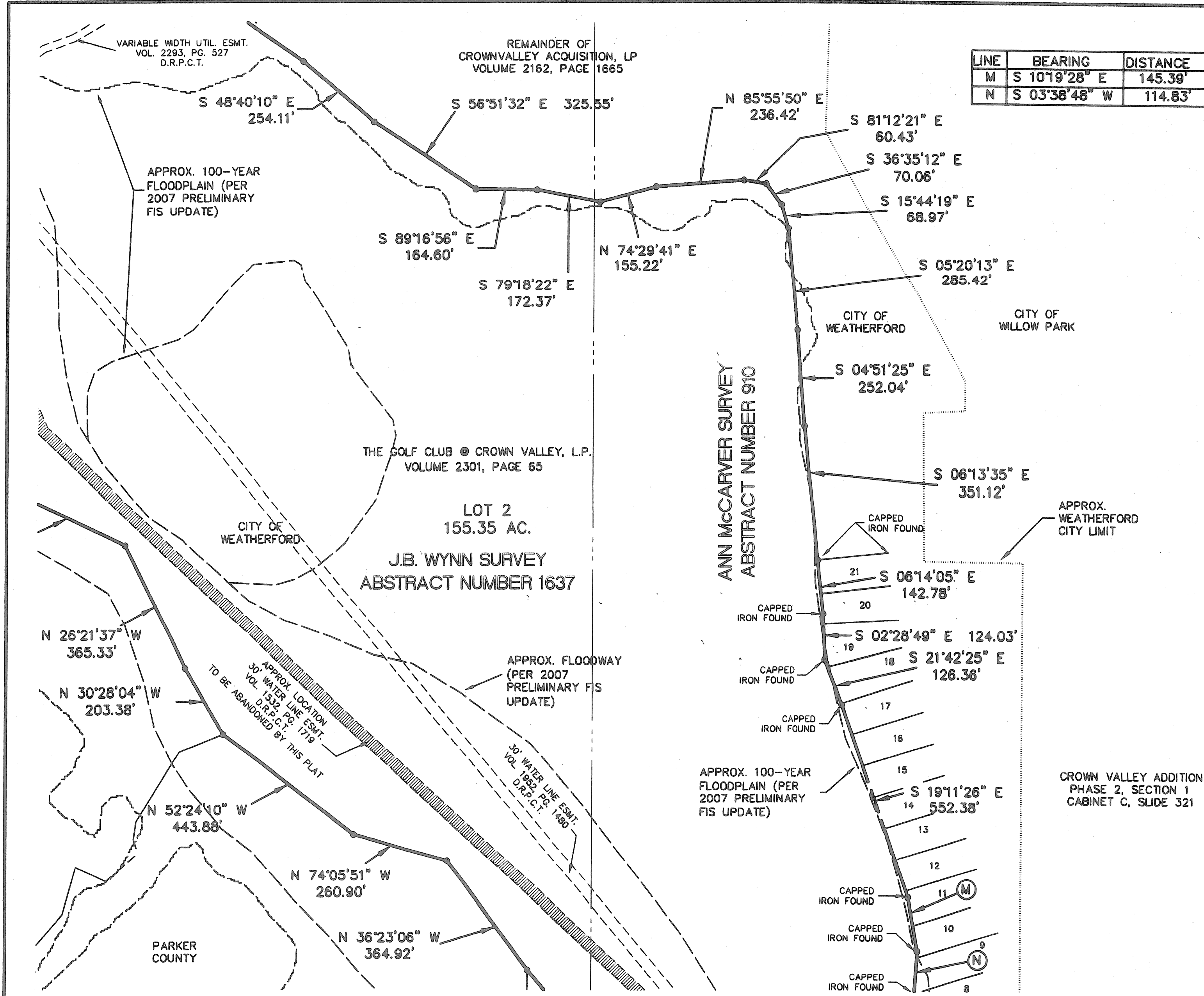
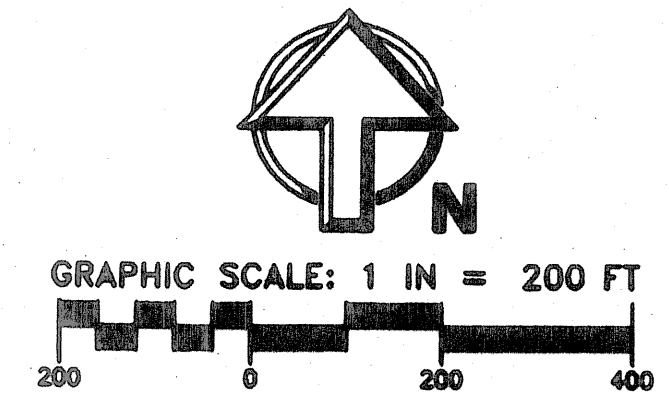


LINE	BEARING	DISTANCE
M	S 10°19'28" E	145.39'
N	S 03°38'48" W	114.83'



C742

FINAL PLAT

**LOTS 1 & 2, BLOCK 1
THE GOLF CLUB
AT CROWN VALLEY**

BEING 158.92 ACRES OF LAND IN THE
C.C. MCCARVER SURVEY, ABST. NO. 908,
J.B. WYNN SURVEY, ABSTRACT NO. 1637
AND THE ANN MCCARVER SURVEY, ABSTRACT NO. 910
PARKER COUNTY, TEXAS

PREPARED FEBRUARY 18, 2008
REVISED JULY 16, 2008

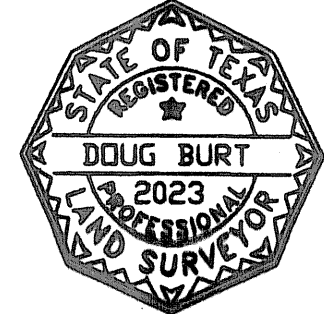
SD Engineering, Inc.
Site Development Engineering

PO Box 1357 Aledo, TX 76008-1357
(817) 441-6400 Fax (817) 441-6085
www.sd-engineering.com

KNOW ALL MEN BY THESE PRESENTS:

THAT I, DOUG BURT, DO HEREBY CERTIFY THAT I PREPARED THIS PLAT FROM AN ACTUAL AND ACCURATE SURVEY OF THE LAND AND THAT THE CORNER MONUMENTS SHOWN THEREON AS "SET" WERE PROPERLY PLACED UNDER MY PERSONAL SUPERVISION IN ACCORDANCE WITH THE SUBDIVISION ORDINANCE OF THE CITY OF WEATHERFORD.

Doug Burt
DOUG BURT/R.P.L.S. NO. 2023



ACCT. NO.: 12784
SCH. DIST.: AL
CITY: WE
MAP NO.: K.15

SHT 3 OF 5