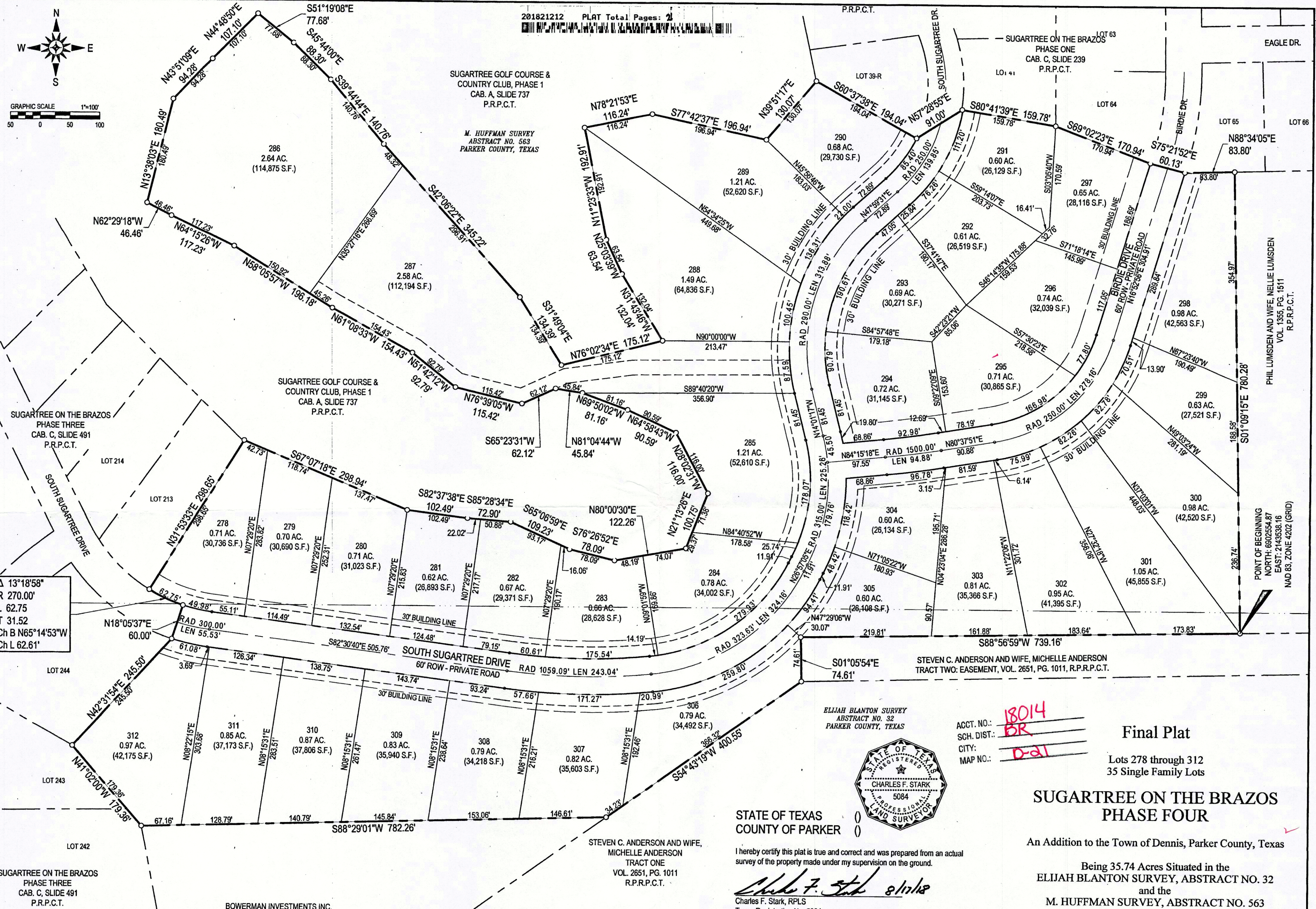
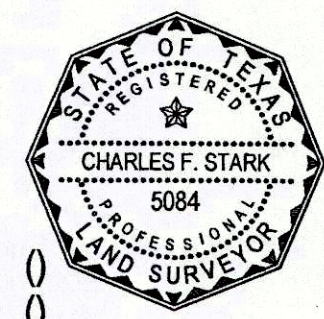


201821212 PLAT Total Pages: 2



Δ 13°18'58"  
R 270.00'  
L 62.75  
T 31.52  
Ch B N65°14'53"W  
Ch L 62.61'

ACCT. NO.: 18014  
SCH. DIST.: BR  
CITY: D-01  
MAP NO.:



STATE OF TEXAS  
COUNTY OF PARKER

I hereby certify this plat is true and correct and was prepared from an actual survey of the property made under my supervision on the ground.

*Charles F. Stark* 8/17/18  
Charles F. Stark, RPLS  
Texas Registration No. 5084

Final Plat

Lots 278 through 312  
35 Single Family Lots

### SUGARTREE ON THE BRAZOS PHASE FOUR

An Addition to the Town of Dennis, Parker County, Texas

Being 35.74 Acres Situated in the  
ELIJAH BLANTON SURVEY, ABSTRACT NO. 32  
and the  
M. HUFFMAN SURVEY, ABSTRACT NO. 563  
Parker County, Texas

FILED FOR RECORD  
PARKER COUNTY, TEXAS PLAT RECORD  
CABINET **E**, SLIDE **141**  
DATE \_\_\_\_\_



6221 Southwest Boulevard, Suite 100  
Fort Worth, Texas 76132  
(O) 817.231.8100 (F) 817.231.8144  
Texas Registered Engineering Firm F-10998  
Texas Registered Survey Firm F-10158800  
www.barronstark.com

**OWNER:**  
YALUMBA PARTNERS, LP  
125 CAHILL CT.  
WEATHERFORD, TEXAS 76088

20563.005.002.00

JOB No. 360-8222  
DATE JULY 2018

SHEET 1 of 2

FILE NAME: \\BARRONSTARK\SWIFT\ENGLISH - YALUMBA PARTNERS\360-8222 - PLATTING OF SUGARTREE PH 4 - PARKER COUNTY\DRAWINGS\PLATTING\20180822\20180822.DWG PLOT FINAL PLATTING