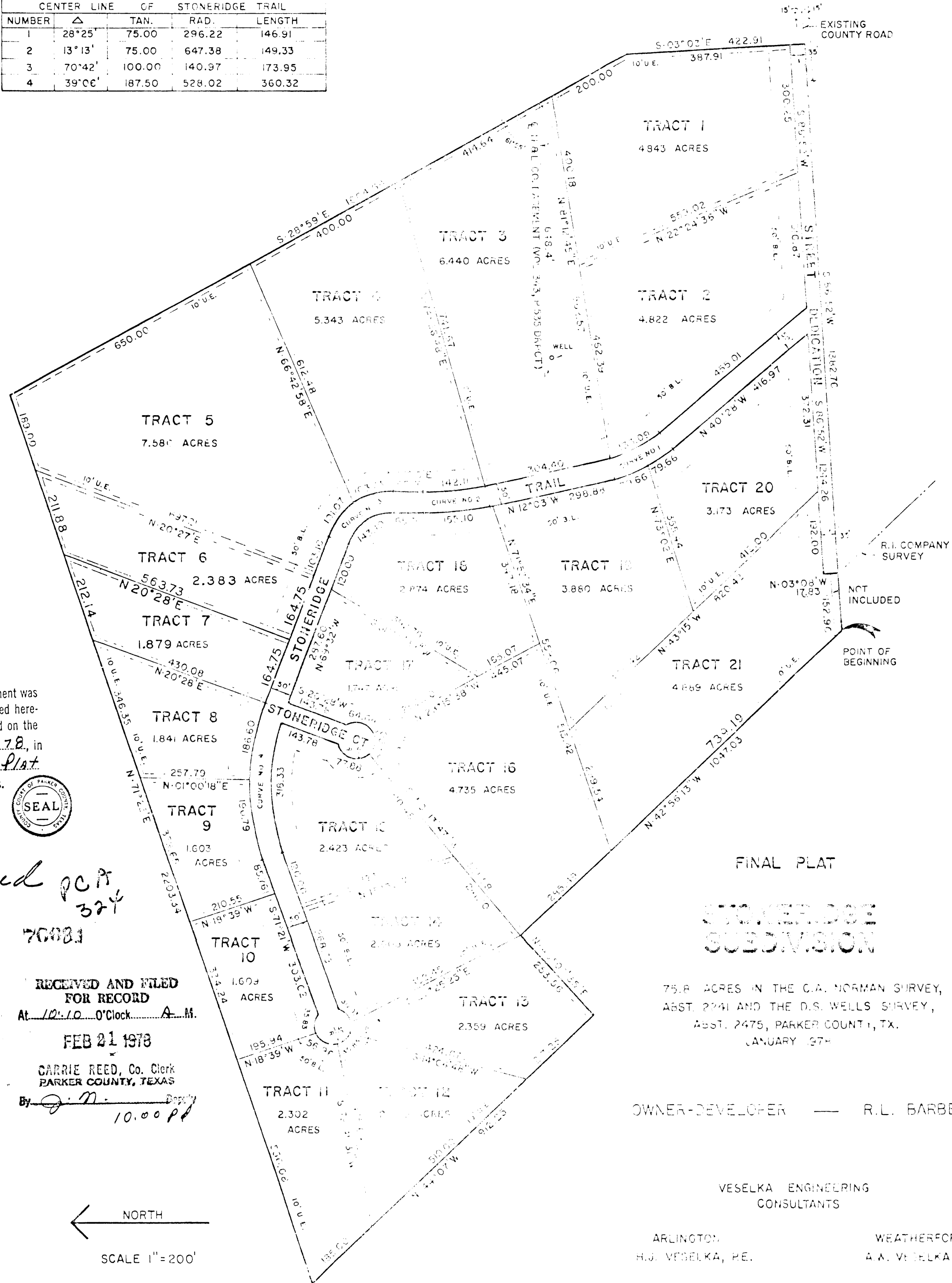


CURVE DATA				
CURVE NUMBER	CENTER LINE OF STONERIDGE TRAIL	TAN. Δ	RAD.	LENGTH
1	28°25'	75.00	296.22	146.91
2	13°13'	75.00	647.38	149.33
3	70°42'	100.00	140.97	173.95
4	39°06'	187.50	528.02	360.32



STATE OF TEXAS
 COUNTY OF PARKER
 I hereby certify that this instrument was filed on the date and time stamped hereon by me and was duly recorded on the 21 day of Feb., A.D. 1978, in Vol. 366 page 80, of the Plat records of Parker County, Texas.



Carrie Reed JCR
 324
 70081
 County Clerk, Parker County, Texas

RECEIVED AND FILED FOR RECORD
 At 10:10 O'Clock A.M.
 FEB 21 1978
 CARRIE REED, Co. Clerk PARKER COUNTY, TEXAS
 By *[Signature]* 10:00 PM

NORTH
 SCALE 1" = 200'

FINAL PLAT
 STONERIDGE SUBDIVISION

75.8 ACRES IN THE C.A. NORMAN SURVEY, ABST. 2441 AND THE D.S. WELLS SURVEY, ABST. 2475, PARKER COUNTY, TX. JANUARY 1978

OWNER-DEVELOPER — R.L. BARBEE, TRUSTEE

VESELKA ENGINEERING CONSULTANTS

ARLINGTON: H.J. VESELKA, P.E.

WEATHERFORD: A.A. VESELKA, P.E.

TRUSTEE

18 Feb
R.L. Barbree, Trustee
R.L. Barbree

21 Feb