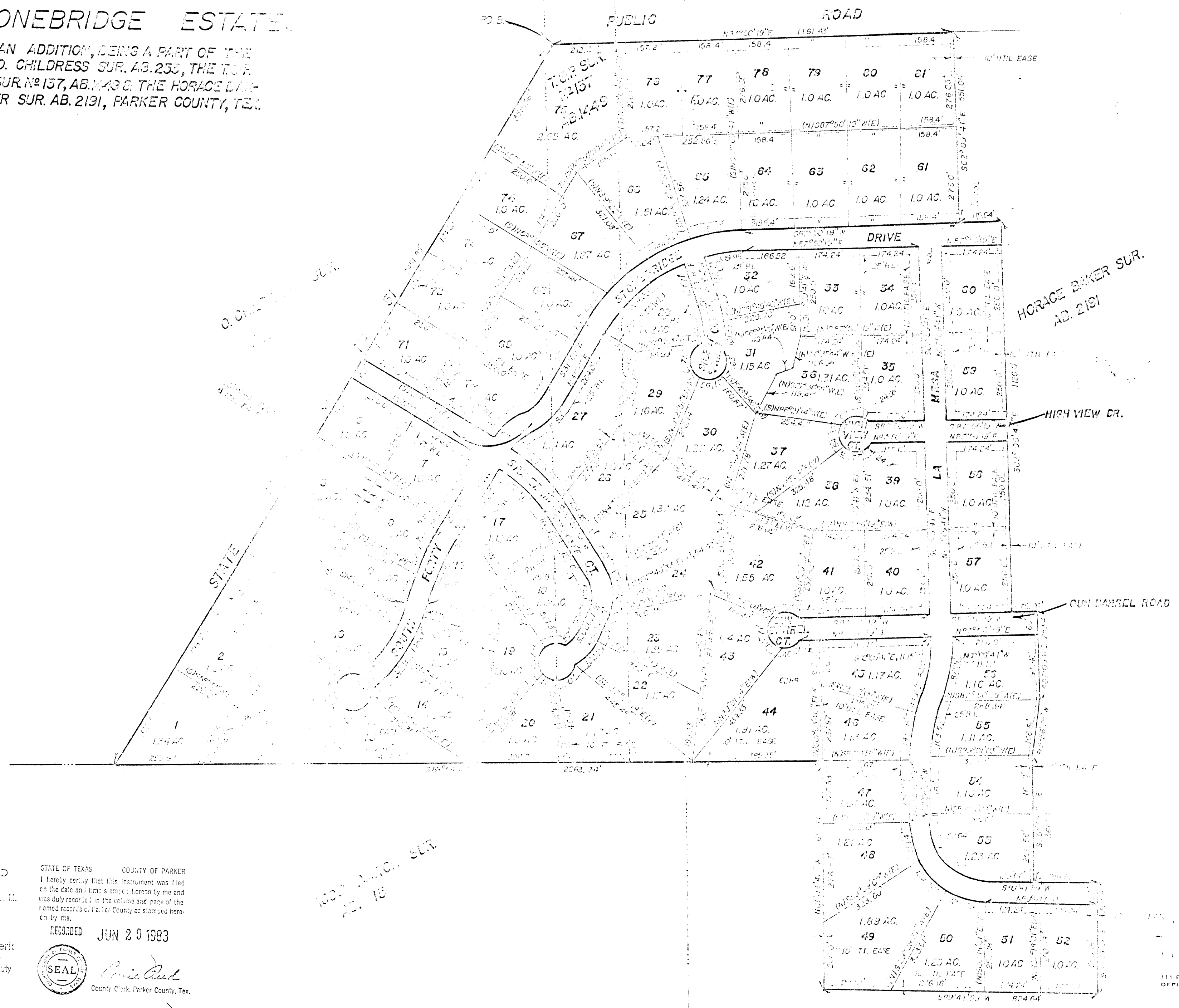


SURVEY OF STONEBRIDGE ESTATES

AN ADDITION, BEING A PART OF THE
O. CHILDRESS SUR. AB. 233, THE TOP
SUR. N^o 137, AB. 143 & THE HORACE BAKER
SUR. AB. 2191, PARKER COUNTY, TEX.



67158

RECEIVED AND FILED
FOR RECORD
At 12:10 O'clock

JUN 29 1983

CARRIE REED, Co. Clerk
PARKER COUNTY, TEXAS

STATE OF TEXAS COUNTY OF PARKER
I hereby certify that this instrument was filed
on the date and at the time signified hereon by me and
was duly recorded in the volume and page of the
named records of Parker County as stamped hereon
by me.

RECORDED JUN 29 1983



Carrie Reed
County Clerk, Parker County, Tex.

1000 AC. SUR.
21, 15

A 438

SCALE 1" = 400'

LEGEND

- IRON PIPE
- ⊙ STEEL ROD
- ⊠ FENCE CORNER
- ✱ FENCE

HUGHES AND ASSOCIATES

LAND SURVEYING
CIVIL ENGINEERING
LAND PLANNING

111 F. COLUMBIA, SUITE E WEATHERFORD, TEXAS
OFFICE 594-5374 OR 441-7614 HOME 484-2164

all signed