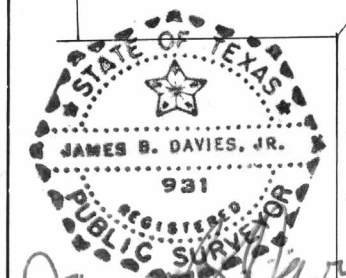
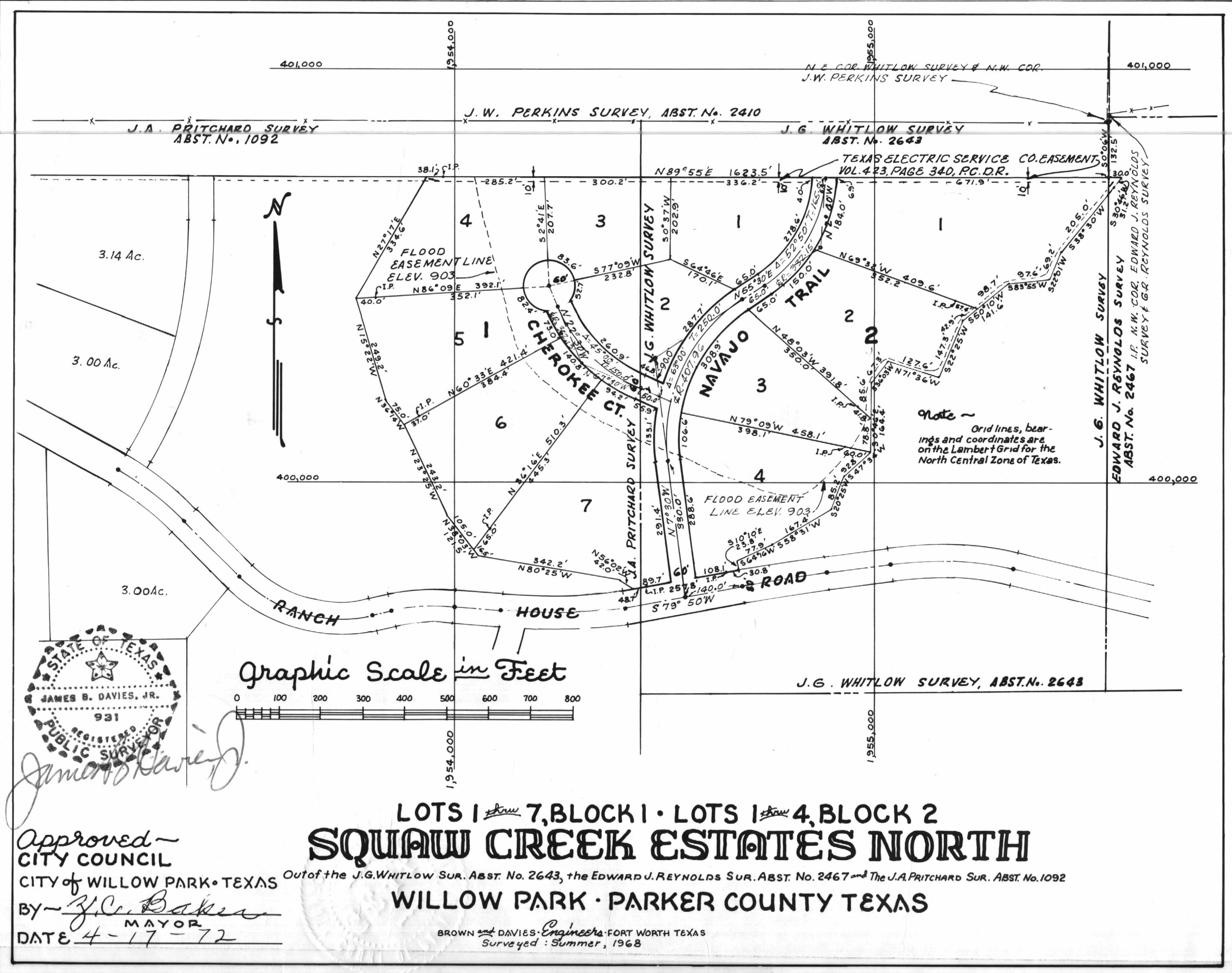


#13365

RECEIVED AND FILED FOR RECORD
APR 28 1972
T. H. "Tommy" McDaniel, Co. Clerk
PARKER COUNTY, TEXAS
By CR Deputy
200 pl.

IN MY OFFICE ON THE 26 DAY OF April A. D. 1972 AT 10:30 O'CLOCK
P. M. AND DULY RECORDED THIS 28 DAY OF April A. D. 1972
AT 11:35 O'CLOCK P. M. IN THE 360th VOLUME OF RECORDS O. SAID
COUNTY, IN VOLUME 360A ON PAGES 2
WITNESS MY HAND AND THE SEAL OF THE COUNTY COURT OF SAID COUNTY
AT OFFICE IN WEATHERFORD, THE DAY AND YEAR LAST ABOVE WRITTEN.
J. C. Baker CLERK



James B. Davies, Jr.
 Approved -
 CITY COUNCIL
 CITY of WILLOW PARK • TEXAS
 BY J. C. Baker MAYOR
 DATE 4-17-72

LOTS 1 ^{thru} 7, BLOCK 1 • LOTS 1 ^{thru} 4, BLOCK 2
SQUAW CREEK ESTATES NORTH

Out of the J.G. WHITLOW SUR. ABST. N. 2643, the EDWARD J. REYNOLDS SUR. ABST. N. 2467 and The J.A. PRITCHARD SUR. ABST. N. 1092

WILLOW PARK • PARKER COUNTY TEXAS

BROWN and DAVIES, Engineers • FORT WORTH TEXAS
 Surveyed: Summer, 1968