

APPROVED BY

A-70

COMMISSIONERS COURT  
PARKER COUNTY, TEXAS

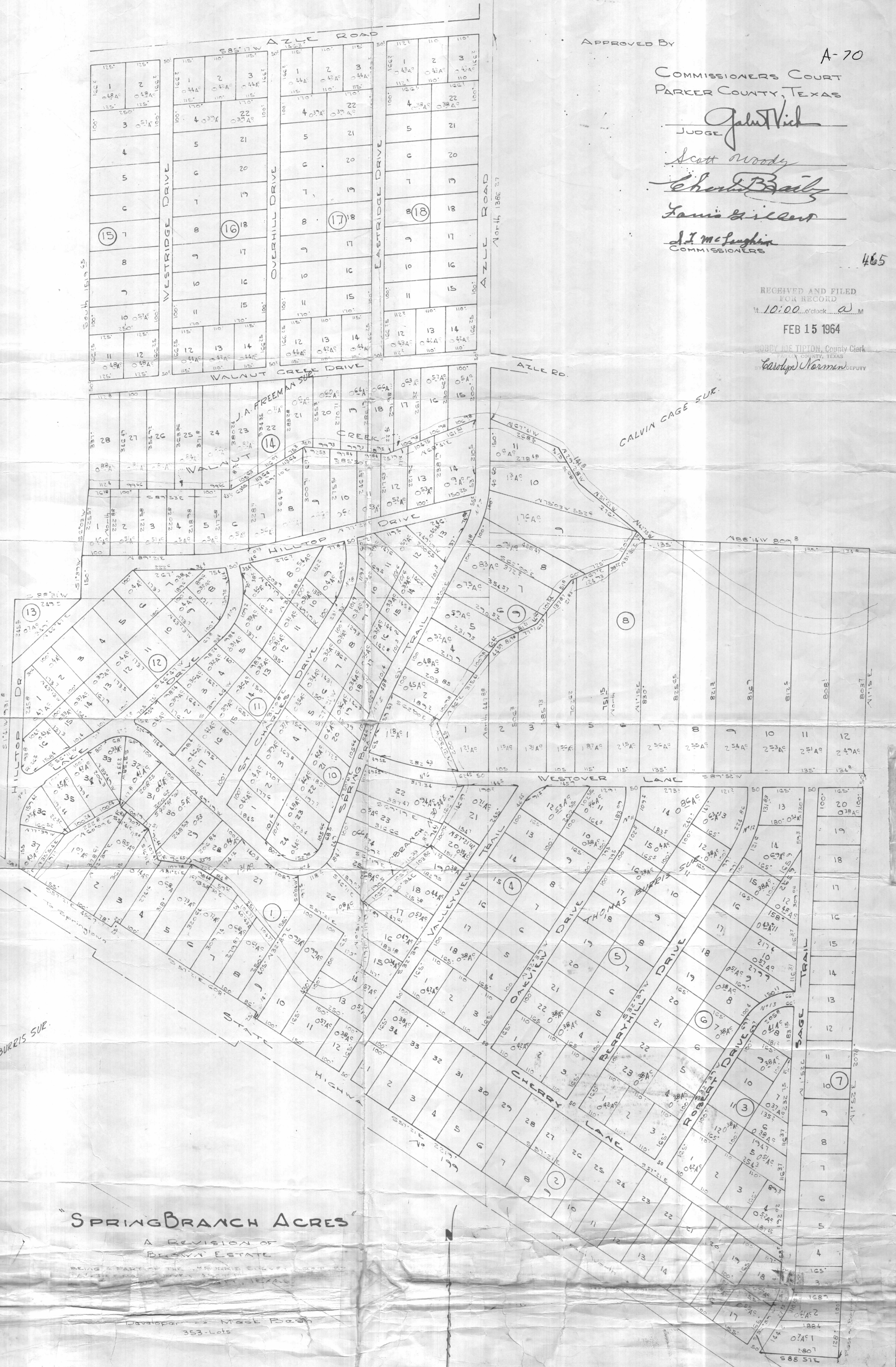
Judge *John Vich*  
*Scott Woody*  
*Charles Bailey*  
*Lamin Gilbert*  
*A. J. McLaughlin*  
COMMISSIONERS

465

RECEIVED AND FILED  
FOR RECORD  
At 10:00 o'clock a.m.

FEB 15 1964

BOBBY DE TIPTON, County Clerk  
PARKER COUNTY, TEXAS  
*Carolyn Harmon* DEPUTY



### SPRING BRANCH ACRES

A REVISION OF  
BROWN ESTATE

Developer: Mark Beard  
353-Lots

STATION	CHORD	ANGLE	CHORD	ANGLE
1	57.77	57.13	57.77	57.13
2	181.25	50.00	181.25	50.00
3	126.85	76.30	126.85	76.30
4	121.51	112.00	121.51	112.00
5	150.40	100.00	150.40	100.00
6	171.25	20.00	171.25	20.00
7	201.08	120.35	201.08	120.35
8	277.51	57.22	277.51	57.22
9	377.11	102.02	377.11	102.02
10	381.30	117.44	381.30	117.44
11	420.17	32.44	420.17	32.44

APPROVED BY  
THE TOWN OF SPRINGTOWN  
*Mark Beard*  
*Mrs. Lola Harde*  
SECRETARY

HUGHES SURVEYING CO  
131 W CHURCH ST. P.O. BOX 45314  
WEATHERFORD, TEXAS  
I, *John Hughes*, do hereby certify that  
the above plat is true & correct as  
surveyed on the ground  
Date Jan. 1964