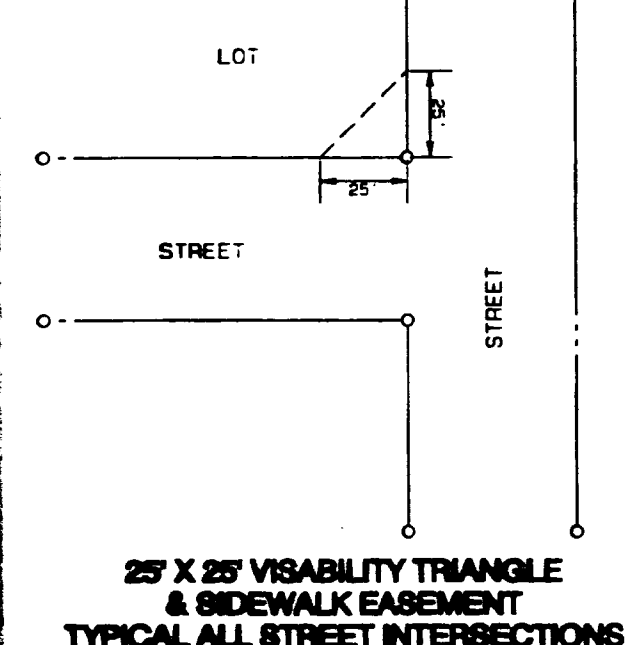
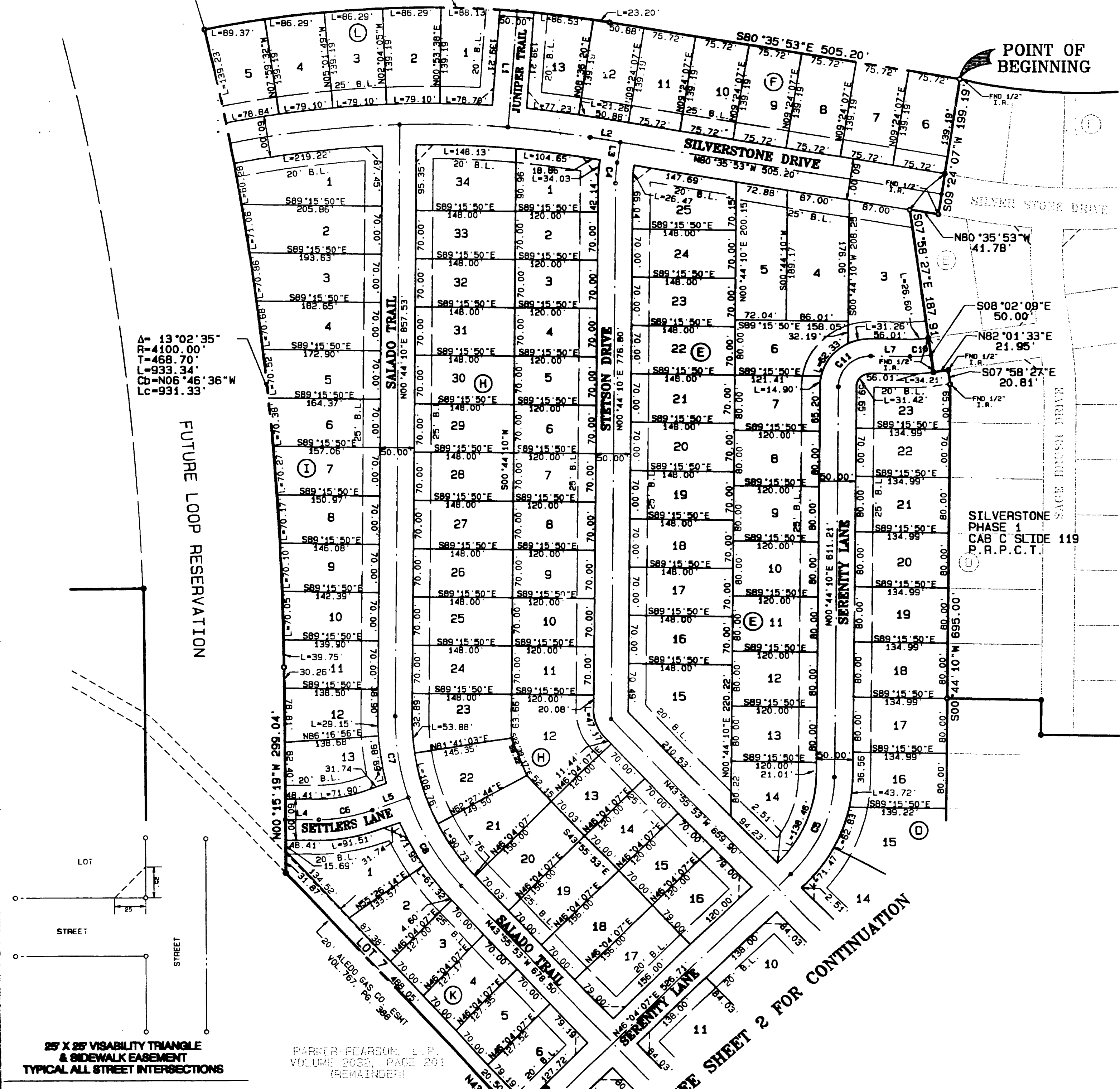


C-354

A= 20'27.43'
 R=1669.19'
 T=301.27'
 L=596.11'
 Cb=N89°10'16"E
 Lc=592.95'

A= 13'02.35"
 R=4100.00'
 T=468.70'
 L=933.34'
 Cb=N06°46'36"W
 Lc=931.33'

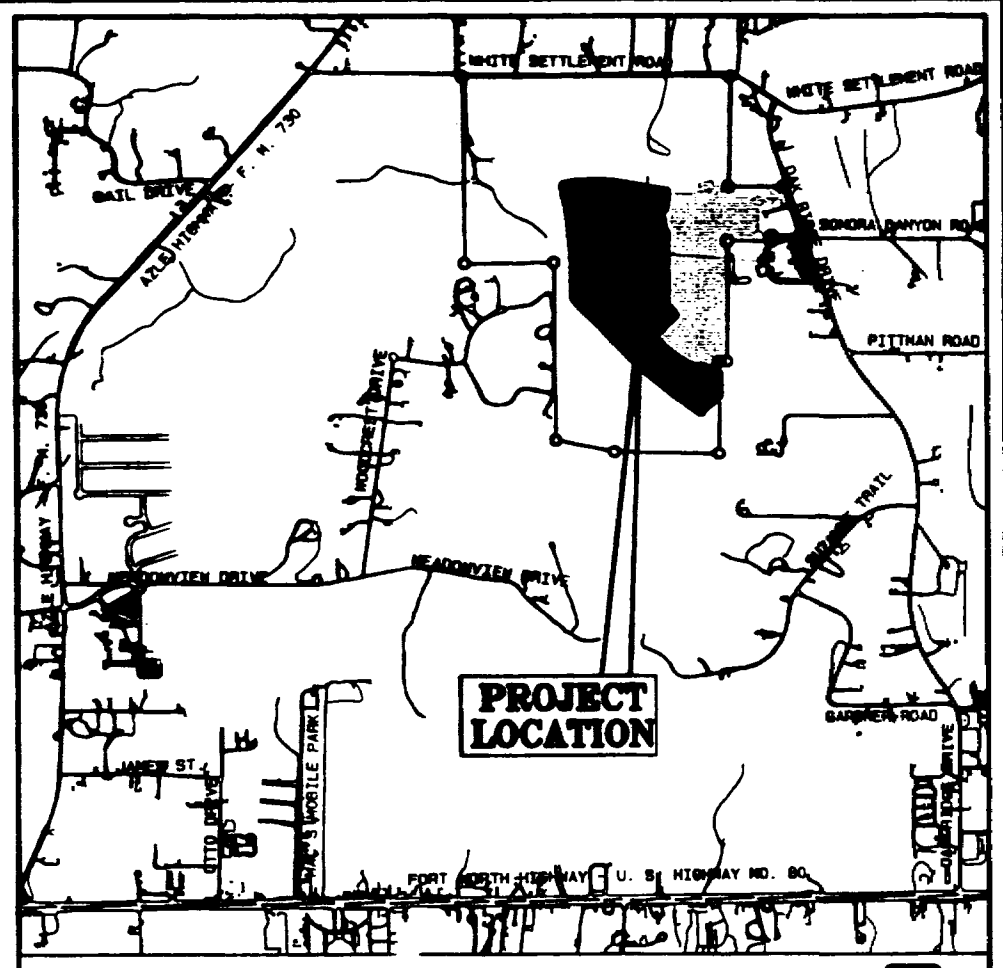


PARKER-PEARSON, L.P.
 VOLUME 2032, PAGE 203
 (REMAINDER)

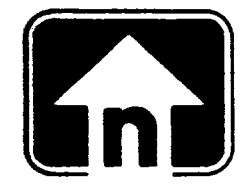
SEE SHEET 2 FOR CONTINUATION

ACCT. NO: 17460
 SCH. DIST: WE
 CITY: WE
 MAP NO: J-14
 21499-6-0-50

GRAPHIC SCALE 1"=100'
 0 100 200 300



Doc# 581818	pgs: 1	\$6.00
Doc# 581819	pgs: 1	\$6.00
Doc# 581820	pgs: 1	\$6.00
Doc# 581821	pgs: 1	\$6.00
Doc# 581822	pgs: 1	\$6.00
Doc# 581823	pgs: 1	\$6.00
Doc# 581824	pgs: 1	\$6.00
Doc# 581825	pgs: 1	\$6.00
Doc# 581826	pgs: 1	\$6.00
Doc# 581827	pgs: 1	\$6.00
Doc# 581828	pgs: 1	\$6.00
Doc# 581829	pgs: 1	\$6.00
Doc# 581830	pgs: 1	\$6.00
Doc# 581831	pgs: 1	\$6.00
Doc# 581832	pgs: 1	\$6.00
Doc# 581833	pgs: 1	\$6.00
Doc# 581834	pgs: 1	\$6.00
Doc# 581835	pgs: 1	\$6.00
Doc# 581836	pgs: 1	\$6.00
Doc# 581837	pgs: 1	\$6.00
Doc# 581838	pgs: 1	\$6.00
Doc# 581839	pgs: 1	\$6.00
Doc# 581840	pgs: 1	\$6.00
Doc# 581841	pgs: 1	\$6.00
Doc# 581842	pgs: 1	\$6.00
Doc# 581843	pgs: 1	\$6.00
Doc# 581844	pgs: 1	\$6.00
Doc# 581845	pgs: 1	\$6.00
Doc# 581846	pgs: 1	\$6.00
Doc# 581847	pgs: 1	\$6.00
Doc# 581848	pgs: 1	\$6.00
Doc# 581849	pgs: 1	\$6.00
Doc# 581850	pgs: 1	\$6.00
Doc# 581851	pgs: 1	\$6.00
Doc# 581852	pgs: 1	\$6.00
Doc# 581853	pgs: 1	\$6.00
Doc# 581854	pgs: 1	\$6.00
Doc# 581855	pgs: 1	\$6.00
Doc# 581856	pgs: 1	\$6.00
Doc# 581857	pgs: 1	\$6.00
Doc# 581858	pgs: 1	\$6.00
Doc# 581859	pgs: 1	\$6.00
Doc# 581860	pgs: 1	\$6.00
Doc# 581861	pgs: 1	\$6.00
Doc# 581862	pgs: 1	\$6.00
Doc# 581863	pgs: 1	\$6.00
Doc# 581864	pgs: 1	\$6.00
Doc# 581865	pgs: 1	\$6.00
Doc# 581866	pgs: 1	\$6.00
Doc# 581867	pgs: 1	\$6.00
Doc# 581868	pgs: 1	\$6.00
Doc# 581869	pgs: 1	\$6.00
Doc# 581870	pgs: 1	\$6.00
Doc# 581871	pgs: 1	\$6.00
Doc# 581872	pgs: 1	\$6.00
Doc# 581873	pgs: 1	\$6.00
Doc# 581874	pgs: 1	\$6.00
Doc# 581875	pgs: 1	\$6.00
Doc# 581876	pgs: 1	\$6.00
Doc# 581877	pgs: 1	\$6.00
Doc# 581878	pgs: 1	\$6.00
Doc# 581879	pgs: 1	\$6.00
Doc# 581880	pgs: 1	\$6.00
Doc# 581881	pgs: 1	\$6.00
Doc# 581882	pgs: 1	\$6.00
Doc# 581883	pgs: 1	\$6.00
Doc# 581884	pgs: 1	\$6.00
Doc# 581885	pgs: 1	\$6.00
Doc# 581886	pgs: 1	\$6.00
Doc# 581887	pgs: 1	\$6.00
Doc# 581888	pgs: 1	\$6.00
Doc# 581889	pgs: 1	\$6.00
Doc# 581890	pgs: 1	\$6.00
Doc# 581891	pgs: 1	\$6.00
Doc# 581892	pgs: 1	\$6.00
Doc# 581893	pgs: 1	\$6.00
Doc# 581894	pgs: 1	\$6.00
Doc# 581895	pgs: 1	\$6.00
Doc# 581896	pgs: 1	\$6.00
Doc# 581897	pgs: 1	\$6.00
Doc# 581898	pgs: 1	\$6.00
Doc# 581899	pgs: 1	\$6.00
Doc# 581900	pgs: 1	\$6.00
Doc# 581901	pgs: 1	\$6.00
Doc# 581902	pgs: 1	\$6.00
Doc# 581903	pgs: 1	\$6.00
Doc# 581904	pgs: 1	\$6.00
Doc# 581905	pgs: 1	\$6.00
Doc# 581906	pgs: 1	\$6.00
Doc# 581907	pgs: 1	\$6.00
Doc# 581908	pgs: 1	\$6.00
Doc# 581909	pgs: 1	\$6.00
Doc# 581910	pgs: 1	\$6.00
Doc# 581911	pgs: 1	\$6.00
Doc# 581912	pgs: 1	\$6.00
Doc# 581913	pgs: 1	\$6.00
Doc# 581914	pgs: 1	\$6.00
Doc# 581915	pgs: 1	\$6.00
Doc# 581916	pgs: 1	\$6.00
Doc# 581917	pgs: 1	\$6.00
Doc# 581918	pgs: 1	\$6.00
Doc# 581919	pgs: 1	\$6.00
Doc# 581920	pgs: 1	\$6.00
Doc# 581921	pgs: 1	\$6.00
Doc# 581922	pgs: 1	\$6.00
Doc# 581923	pgs: 1	\$6.00
Doc# 581924	pgs: 1	\$6.00
Doc# 581925	pgs: 1	\$6.00
Doc# 581926	pgs: 1	\$6.00
Doc# 581927	pgs: 1	\$6.00
Doc# 581928	pgs: 1	\$6.00
Doc# 581929	pgs: 1	\$6.00
Doc# 581930	pgs: 1	\$6.00
Doc# 581931	pgs: 1	\$6.00
Doc# 581932	pgs: 1	\$6.00
Doc# 581933	pgs: 1	\$6.00
Doc# 581934	pgs: 1	\$6.00
Doc# 581935	pgs: 1	\$6.00
Doc# 581936	pgs: 1	\$6.00
Doc# 581937	pgs: 1	\$6.00
Doc# 581938	pgs: 1	\$6.00
Doc# 581939	pgs: 1	\$6.00
Doc# 581940	pgs: 1	\$6.00
Doc# 581941	pgs: 1	\$6.00
Doc# 581942	pgs: 1	\$6.00
Doc# 581943	pgs: 1	\$6.00
Doc# 581944	pgs: 1	\$6.00
Doc# 581945	pgs: 1	\$6.00
Doc# 581946	pgs: 1	\$6.00
Doc# 581947	pgs: 1	\$6.00
Doc# 581948	pgs: 1	\$6.00
Doc# 581949	pgs: 1	\$6.00
Doc# 581950	pgs: 1	\$6.00
Doc# 581951	pgs: 1	\$6.00
Doc# 581952	pgs: 1	\$6.00
Doc# 581953	pgs: 1	\$6.00
Doc# 581954	pgs: 1	\$6.00
Doc# 581955	pgs: 1	\$6.00
Doc# 581956	pgs: 1	\$6.00
Doc# 581957	pgs: 1	\$6.00
Doc# 581958	pgs: 1	\$6.00
Doc# 581959	pgs: 1	\$6.00
Doc# 581960	pgs: 1	\$6.00
Doc# 581961	pgs: 1	\$6.00
Doc# 581962	pgs: 1	\$6.00
Doc# 581963	pgs: 1	\$6.00
Doc# 581964	pgs: 1	\$6.00
Doc# 581965	pgs: 1	\$6.00
Doc# 581966	pgs: 1	\$6.00
Doc# 581967	pgs: 1	\$6.00
Doc# 581968	pgs: 1	\$6.00
Doc# 581969	pgs: 1	\$6.00
Doc# 581970	pgs: 1	\$6.00
Doc# 581971	pgs: 1	\$6.00
Doc# 581972	pgs: 1	\$6.00
Doc# 581973	pgs: 1	\$6.00
Doc# 581974	pgs: 1	\$6.00
Doc# 581975	pgs: 1	\$6.00
Doc# 581976	pgs: 1	\$6.00
Doc# 581977	pgs: 1	\$6.00
Doc# 581978	pgs: 1	\$6.00
Doc# 581979	pgs: 1	\$6.00
Doc# 581980	pgs: 1	\$6.00
Doc# 581981	pgs: 1	\$6.00
Doc# 581982	pgs: 1	\$6.00
Doc# 581983	pgs: 1	\$6.00
Doc# 581984	pgs: 1	\$6.00
Doc# 581985	pgs: 1	\$6.00
Doc# 581986	pgs: 1	\$6.00
Doc# 581987	pgs: 1	\$6.00
Doc# 581988	pgs: 1	\$6.00
Doc# 581989	pgs: 1	\$6.00
Doc# 581990	pgs: 1	\$6.00
Doc# 581991	pgs: 1	\$6.00
Doc# 581992	pgs: 1	\$6.00
Doc# 581993	pgs: 1	\$6.00
Doc# 581994	pgs: 1	\$6.00
Doc# 581995	pgs: 1	\$6.00
Doc# 581996	pgs: 1	\$6.00
Doc# 581997	pgs: 1	\$6.00
Doc# 581998	pgs: 1	\$6.00
Doc# 581999	pgs: 1	\$6.00
Doc# 582000	pgs: 1	\$6.00



FINAL PLAT SILVERSTONE AT PEARSON RANCH PHASE 3

T. & P. R.R. CO. Survey
 Abstract No. 1499
 City of Weatherford
 Parker County, Texas
 131 RESIDENTIAL LOTS

NOTE: BASIS OF BEARING FOR THIS PLAT IS THE CITY OF WEATHERFORD GIS COORDINATE SYSTEM

OWNP:
 PARKER-PEARSON, L.P.
 3220 W. SOUTHLAKE BOULEVARD
 SOUTHLAKE, TEXAS 76092
 (817) 379-6565

Graham Associates, Inc.
 CONSULTING ENGINEERS & PLANNERS
 800 SIX FLAGS DRIVE, SUITE 500
 ARLINGTON, TEXAS 76011 (817) 640-8535