

LEGEND

EM	ELECTRIC METER	SSCO	SANITARY SEWER CLEANOUT
WM	WATER VALVE	MH	MANHOLE
GM	GAS VALVE	TC	TOP OF CURB
GM	GAS METER	NG	NATURAL GROUND
SSMH	SANITARY SEWER MANHOLE	FL	FLOW LINE
MH	MANHOLE	STSMH	STORM SEWER MANHOLE
PP	POWER POLE	RCP	REINFORCED CONCRETE PIPE
LS	LIGHT STANDARD	CMP	CORRUGATED METAL PIPE
TR	TELEPHONE RISER	BLDG	BUILDING
OH	OVERHEAD	ASPH	ASPHALT
UG	UNDERGROUND	BM	BENCH MARK
W	WATER LINE	RR	RAILROAD
PH	FIRE HYDRANT	RW	RETAINING WALL
G	GAS LINE	AC	AIR CONDITION PAD
E	ELECTRIC	FNC	FENCE
CBL	CABLE TELEVISION	CONC	CONCRETE
T	TELEPHONE	COR	CORNER
TYP	TYPICAL	UTIL	UTILITY
SS	SANITARY SEWER	ESMT	EASEMENT
		COL	COLUMN

FINAL PLAT OF

SILVERADO ON THE BRAZOS PHASE FOUR  
 an addition to Parker County, Texas and being parts of the  
 I.&G.N.R.R. CO. SURVEY, Abstract No. 1815, Block 28 in the  
 LEON COUNTY SCHOOL LAND SURVEY, Abstract No. 798,  
 the D.O. NORTON SURVEY, Abstract No. 1007 and the  
 J.C. REESE SURVEY, Abstract No. 2468, situated about 13-6/10  
 miles south of the courthouse in Weatherford, the county seat for  
 Parker County, Texas.  
 We marked the corner as shown hereon.  
 Surveyed on the ground May, 2003.

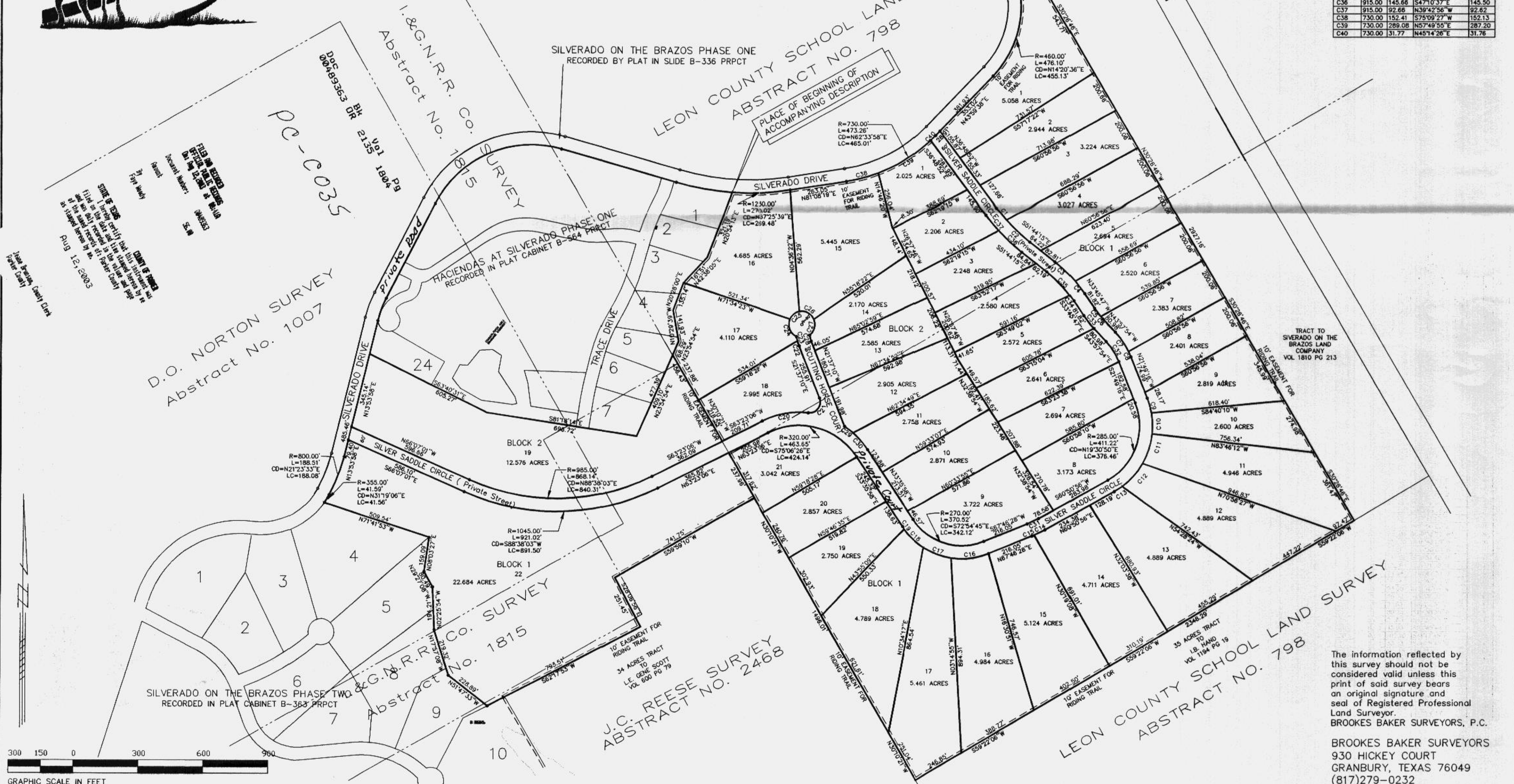
BROOKES BAKER SURVEYORS

ACCT. NO.: 17451 Sheet 2 of 2  
 SCH. DIST.: WE  
 CITY: CO  
 MAP NO.: H-23

NUMBER	R=	L=	CD=	LC=
C1	855.00	74.73	N39°19'07"W	74.71
C2	855.00	147.95	S46°46'48"E	147.77
C3	845.00	129.42	S45°59'22"E	129.20
C4	845.00	72.93	N37°00'08"W	72.89
C5	355.00	46.81	N37°32'27"W	46.78
C6	355.00	16.40	S42°38'31"E	16.39
C7	345.00	106.83	S35°05'39"E	106.41
C8	345.00	26.51	N24°01'19"W	26.50
C9	345.00	71.16	S15°54'42"E	71.04
C10	345.00	97.91	N01°52'19"W	97.59
C11	345.00	142.14	S18°03'43"W	141.14
C12	345.00	142.49	S41°41'49"W	141.48
C13	345.00	44.08	S57°11'19"W	44.05
C14	945.00	55.33	N63°45'28"E	55.31
C15	945.00	10.55	N67°13'12"E	10.55
C16	330.00	176.34	N83°05'00"E	174.25
C17	330.00	139.02	N69°32'22"W	137.99
C18	330.00	123.28	N46°46'09"W	122.56
C19	330.00	14.21	N34°50'00"W	14.21
C20	380.00	218.58	S79°51'45"W	215.57
C21	50.00	102.94	S37°21'39"W	85.70
C22	255.45	24.94	N18°49'20"W	24.93
C23	255.45	19.14	N13°52'43"W	19.14
C24	60.00	93.08	N21°16'04"W	84.02
C25	60.00	58.50	N51°06'21"E	56.21
C26	60.00	81.83	S61°53'37"E	75.63
C27	60.00	80.28	S15°30'35"W	74.43
C28	195.45	27.63	N17°34'13"W	27.60
C29	380.00	49.99	S52°45'44"E	49.95
C30	380.00	102.10	S41°17'48"E	101.79
C31	485.00	58.63	S64°18'42"W	58.59
C32	285.00	110.15	S32°53'35"E	109.46
C33	415.00	73.89	N38°51'51"W	73.80
C34	585.00	31.58	S35°18'35"E	31.58
C35	585.00	151.94	N44°17'49"W	151.51
C36	915.00	145.66	S47°10'37"E	145.50
C37	915.00	92.66	N39°42'56"W	92.62
C38	730.00	152.41	S75°09'27"W	152.13
C39	730.00	289.08	N57°48'55"E	287.20
C40	730.00	31.77	N45°14'26"E	31.76



Silverado  
 On the Brazos



The information reflected by this survey should not be considered valid unless this print of said survey bears an original signature and seal of Registered Professional Land Surveyor.  
 BROOKES BAKER SURVEYORS, P.C.

BROOKES BAKER SURVEYORS  
 930 HICKEY COURT  
 GRANBURY, TEXAS 76049  
 (817)279-0232  
 alan@brookesbakersurveyors.com