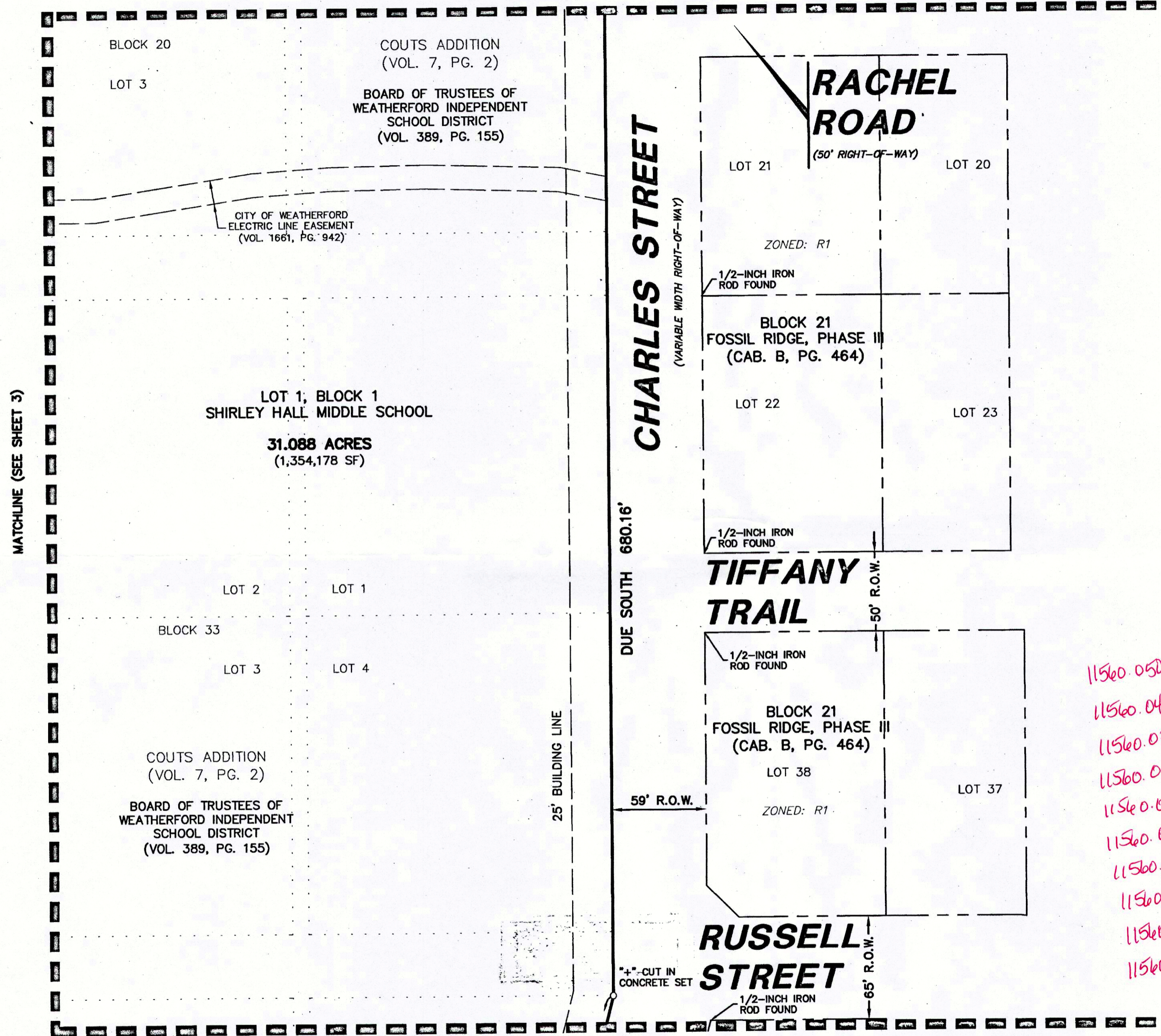
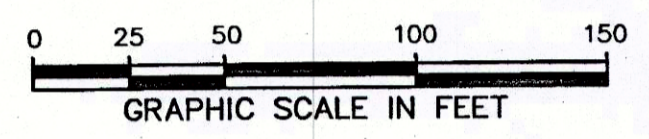
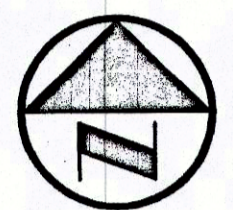


MATCHLINE (SEE SHEET 2)



MATCHLINE (SEE SHEET 3)

MATCHLINE (SEE SHEET 5)



LEGEND

- IRS 1/2-INCH IRON ROD W/ "PACHECO KOCH" CAP SET
- (C.M.) CONTROLLING MONUMENT
- PROPERTY LINE
- EASEMENT LINE
- SETBACK LINE

11560.050.001.00
 11560.049.001.00
 11560.035.001.00
 11560.036.001.00
 11560.034.001.00
 11560.033.001.00
 11560.033.001.10
 11560.020.002.00
 11560.019.000.00
 11560.018.000.00

ACCT. NO: 11560
 SCH. DIST: CUE
 CITY: H-15
 MAP NO:

(SHEET 4 OF 5)
 REPLAT
**SHIRLEY HALL
 MIDDLE SCHOOL**

BEING A REPLAT OF PART OF BLOCKS
 18, 19, 20, 33, 34, 35, 36, 49 & 50,
 COUTS ADDITION
 BEING OUT OF THE
 AZARIAH BRACKENE SURVEY, ABSTRACT NO. 72,
 CITY OF WEATHERFORD, PARKER COUNTY, TEXAS

OWNER:
 WEATHERFORD INDEPENDENT SCHOOL DISTRICT
 1100 LONGHORN DRIVE
 WEATHERFORD, TX 76086
 817-598-2800

SURVEYOR:
 PACHECO KOCH CONSULTING ENGINEERS, INC.
 6100 WESTERN PLACE, STE 1001
 FORT WORTH, TX 76107
 817-412-7155
 CONTACT: RENE SILVAS, R.P.L.S.

| | | | |
|---------------------|------------------|--|--------------------|
| Pacheco Koch | | 6100 WESTERN PLACE, SUITE 1001 FORT WORTH, TX 76107 817.412.7155 | |
| | | TX REG. ENGINEERING FIRM F-469 TX REG. SURVEYING FIRM LS-10008001 | |
| DRAWN BY PMD | CHECKED BY RS | SCALE 1"=50' | DATE 11/17/2015 |
| | | JOB NUMBER 3705-15.168 | |

D702

RSLVAS 10/14/2016 - 7:20AM
 J:\DWG-37\3705-15.168\DWG\SURVEY C3D 2012\3705-15.168RP.DWG

REPLAT - SHIRLEY HALL MIDDLE SCHOOL