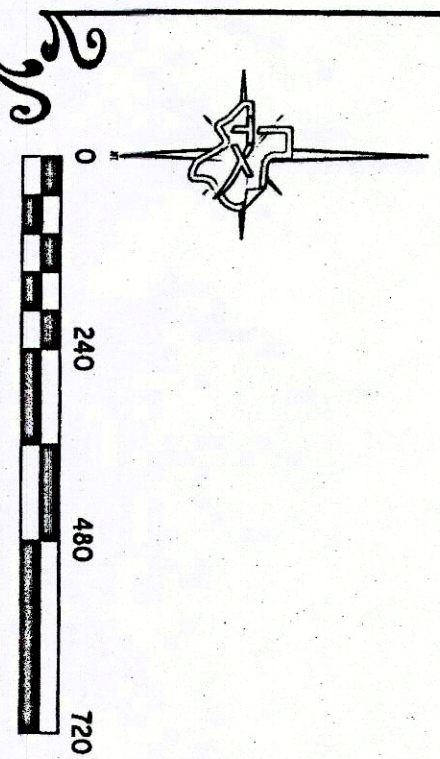
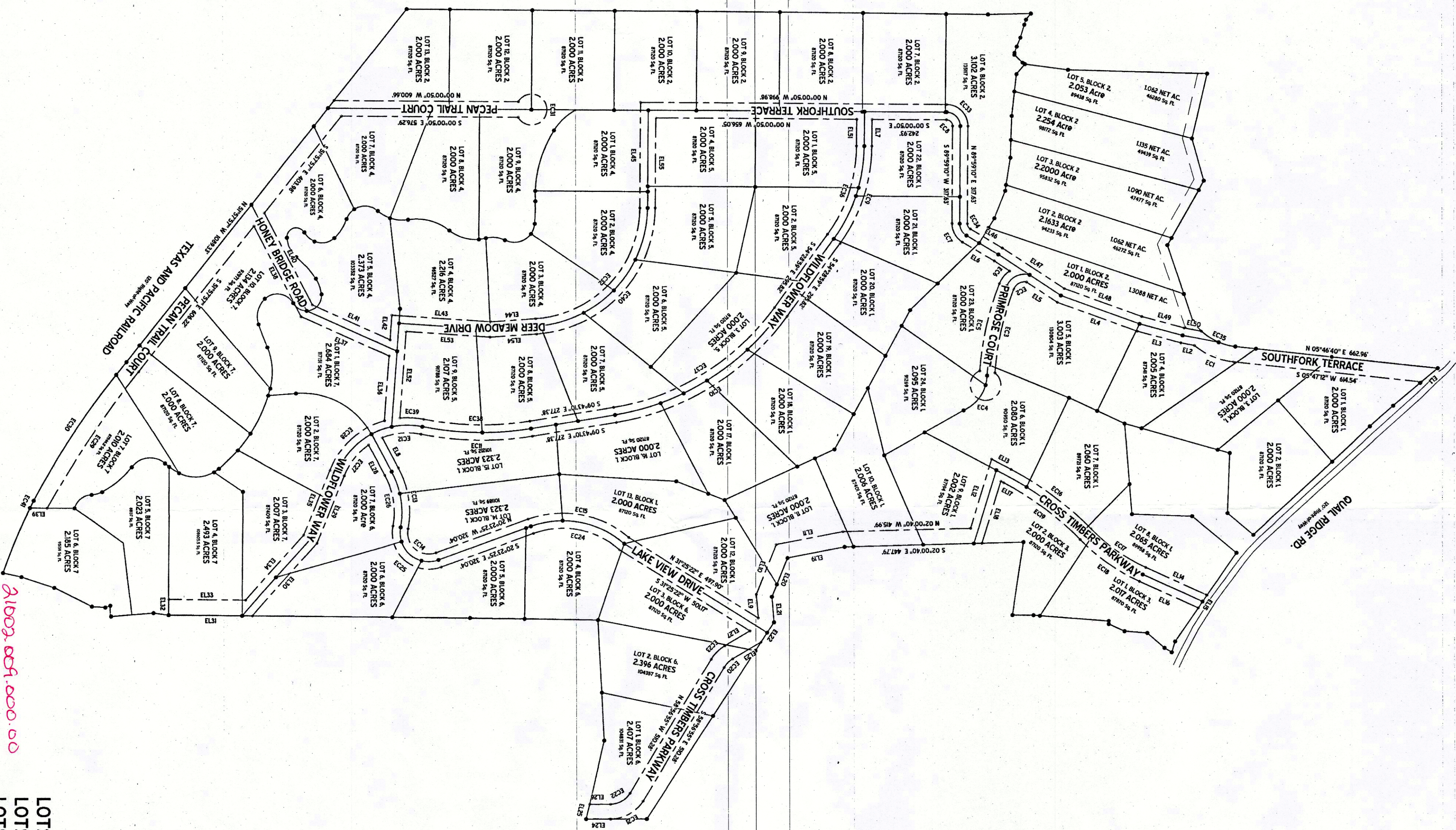


BOUNDARY LINE TABLE

CURVE I	RADIUS	ARC	CHORD BEARING	CHORD
EC1	229.02'	140.24'	S 29°20'00" W	134.47'
EC2	37.66'	51.76'	S 89°54'45" E	47.77'
EC3	963.49'	2812.4'	S 77°42'27" E	2802.4'
EC4	50.00'	241.73'	S 06°54'14" W	500.0'
EC5	1013.56'	2913.27'	N 77°10'21" W	2922.25'
EC6	87.60'	54.09'	N 51°35'57" W	51.23'
EC7	70.00'	73.01'	S 60°04'28" W	66.74'
EC8	20.00'	31.42'	S 44°59'10" W	21.28'
EC9	546.34'	334.87'	S 72°14'54" E	334.40'
EC10	660.74'	672.47'	S 32°04'05" E	655.44'
EC11	1031.00'	345.53'	S 00°37'07" W	343.60'
EC12	222.26'	129.00'	S 09°40'12" E	127.79'
EC13	301.18'	207.74'	N 80°50'52" E	203.42'
EC14	64.88'	143.22'	N 40°01'31" E	119.78'
EC15	78.72'	339.19'	N 10°01'31" E	333.57'
EC16	78.72'	287.27'	N 14°42'11" E	316.18'
EC17	576.03'	234.42'	N 34°42'11" W	237.72'
EC18	626.03'	234.42'	S 34°42'11" W	237.72'
EC19	975.00'	311.54'	S 34°42'11" W	310.22'
EC20	600.00'	381.15'	S 44°45'30" E	347.76'
EC21	125.00'	127.60'	S 29°42'27" E	122.13'
EC22	75.00'	74.56'	N 24°42'27" W	73.28'
EC23	130.00'	63.83'	N 44°53'30" W	62.99'
EC24	279.22'	300.47'	S 10°24'17" W	284.88'
EC25	118.88'	250.64'	S 40°01'49" W	204.73'
EC26	223.16'	173.23'	S 80°50'52" W	169.87'
EC27	222.26'	129.00'	S 19°02'25" E	127.91'
EC28	272.26'	247.15'	N 42°25'10" W	239.11'
EC29	345.53'	535.42'	S 59°24'28" E	534.49'
EC30	254.00'	543.87'	S 35°24'28" E	542.83'
EC31	50.00'	24.80'	N 89°59'10" E	50.00'
EC32	70.00'	58.62'	N 47°10'17" W	49.688'
EC33	20.00'	20.84'	N 40°01'31" E	19.899'
EC34	92.27'	123.32'	N 24°42'11" E	121.27'
EC35	496.34'	307.60'	S 72°14'54" E	302.24'
EC36	963.49'	434.40'	S 32°04'05" E	427.42'
EC37	660.74'	347.53'	S 00°37'07" W	344.65'
EC38	963.49'	471.53'	S 00°37'07" W	464.65'
EC39	272.26'	74.11'	S 02°44'17" W	77.84'
EC40	414.91'	641.09'	N 47°10'17" W	554.72'
EC41	184.03'	271.2'	S 49°59'10" E	271.2'

BOUNDARY LINE TABLE

LINE	BEARING	DISTANCE
EL1	S 67°01'31" E	46.30'
EL2	S 10°24'17" W	45.30'
EL3	S 10°24'17" W	146.27'
EL4	S 10°24'17" W	276.42'
EL5	S 30°17'42" W	120.44'
EL6	N 89°59'10" E	120.56'
EL7	N 89°59'10" E	87.24'
EL8	N 89°59'10" E	113.32'
EL9	S 89°59'10" W	77.03'
EL10	N 89°59'10" W	175.35'
EL11	N 72°10'17" W	224.46'
EL12	N 72°10'17" W	237.79'
EL13	N 29°18'48" E	71.33'
EL14	S 29°18'48" E	218.65'
EL15	S 59°24'28" E	502.82'
EL16	S 35°24'28" E	209.53'
EL17	S 35°24'28" E	209.53'
EL18	S 35°24'28" E	209.53'
EL19	S 35°24'28" E	209.53'
EL20	S 44°45'30" E	134.60'
EL21	N 89°59'10" E	63.10'
EL22	S 72°14'54" E	77.32'
EL23	S 32°04'05" E	107.42'
EL24	S 30°17'42" E	74.46'
EL25	N 77°10'17" W	51.33'
EL26	N 00°27'47" W	61.85'
EL27	N 30°54'24" W	94.88'
EL28	S 61°14'41" W	113.32'
EL29	S 44°45'30" E	239.27'
EL30	S 44°45'30" E	336.87'
EL31	S 44°45'30" E	273.27'
EL32	N 89°59'10" W	50.00'
EL33	N 89°59'10" W	29.02'
EL34	N 89°59'10" W	29.02'
EL35	N 40°01'31" W	21.22'
EL36	N 44°53'30" W	21.22'
EL37	S 23°44'32" W	54.07'
EL38	S 44°45'30" W	333.87'
EL39	S 00°00'00" E	333.50'
EL40	N 62°04'32" E	271.57'
EL41	N 23°44'32" E	271.57'
EL42	N 03°21'31" W	80.79'
EL43	N 03°21'31" W	323.59'
EL44	N 04°20'58" W	143.99'
EL45	S 89°59'10" W	343.24'
EL46	N 30°17'42" E	121.70'
EL47	N 32°51'08" E	240.55'
EL48	N 19°22'22" E	248.79'
EL49	N 15°31'21" E	146.17'
EL50	N 14°42'11" E	51.02'
EL51	N 14°42'11" E	282.43'
EL52	N 14°42'11" W	273.83'
EL53	N 03°21'31" E	152.65'
EL54	N 04°01'31" W	152.65'
EL55	S 89°59'10" W	283.24'



21002.001.000.00
 21002.012.000.00
 22217.004.000.00
 22217.005.000.00
 22217.004.000.50
 22217.010.001.00
 20833.005.000.00

E 208

LOTS 1-24, BLOCK 1; LOT 1-13, BLOCK 2;
 LOTS 1-2, BLOCK 3; LOTS 1-9, BLOCK 4;
 LOTS 1-9, BLOCK 5; LOTS 1-7, BLOCK 6;
 LOTS 1-10, BLOCK 7;

"SEVENFOLD ADDITION"
 AN ADDITION TO THE TOWN OF ANNETTA NORTH,
 PARKER COUNTY, TEXAS
 DECEMBER 2018

ACCT. NO.: 17467
 SCH. DIST.: RL
 CITY: L-11
 MAP NO.:

19% ES3
 81% ES1



TEXAS SURVEYING
 FINAL PLAT OF