

Doc 00430874 Bk OR Vol 1969 Pg 241

PCB668

FILED AND RECORDED
OFFICIAL PUBLIC RECORDS
On Nov 14, 2001 at 01:41P

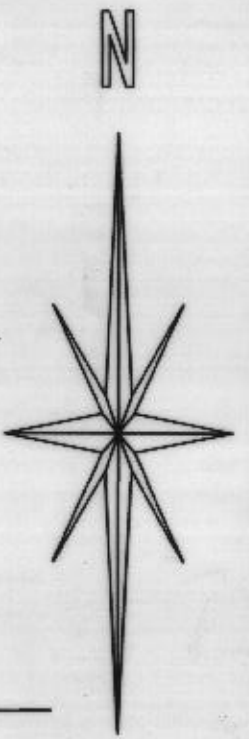
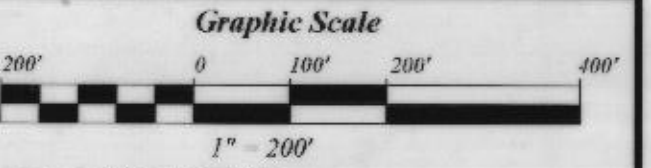
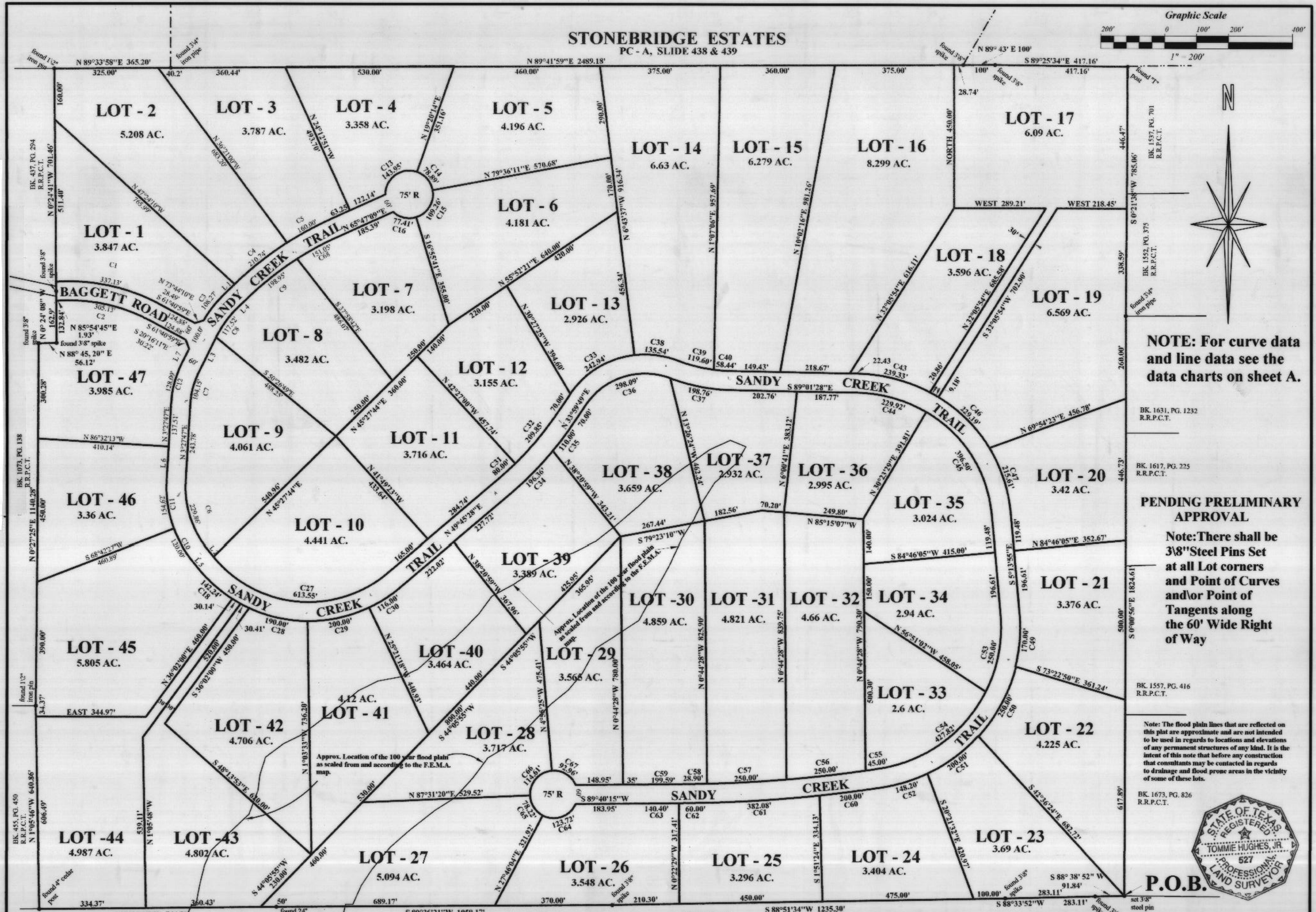
Document Number: 00438874
Amount: .00

By Melissa Rutledge

STATE OF TEXAS COUNTY OF PARKER
I hereby certify that this instrument was
filed on the date and time stamped herein by me
and was duly recorded in the volume and page
of the named records of Parker County
as stamped herein by me.

Nov 14, 2001

Jeanne Brunson, County Clerk
Parker County



NOTE: For curve data and line data see the data charts on sheet A.

BK. 1631, PG. 1232
R.R.P.C.T.

BK. 1617, PG. 225
R.R.P.C.T.

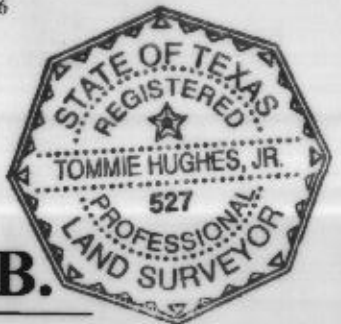
PENDING PRELIMINARY APPROVAL

Note: There shall be 3/8" Steel Pins Set at all Lot corners and Point of Curves and/or Point of Tangents along the 60' Wide Right of Way

BK. 1557, PG. 416
R.R.P.C.T.

Note: The flood plain lines that are reflected on this plat are approximate and are not intended to be used in regards to locations and elevations of any permanent structures of any kind. It is the intent of this note that before any construction that consultants may be contacted in regards to drainage and flood prone areas in the vicinity of some of these lots.

BK. 1673, PG. 826
R.R.P.C.T.



P.O.B.

SHEET B

BK. 455, PG. 450
R.R.P.C.T.

NOTE: Bearings are correlated with the south line of STONEBRIDGE ESTATES.

TOMMIE HUGHES AND ASSOCIATES, P.C.
Registered Professional Land Surveyors

1414 S. MAIN STREET
Office 594-5374 or 596-0212

WEATHERFORD, TEXAS
Home 613-1164

Date 9 - 18 - 2001 No. 18240

FINAL PLAT OF
SANDY CREEK RANCHES ADDITION
BEING 205.94 ACRES OF LAND BEING A PART OF THE P.H. ANDERSON SURVEY, ABSTRACT NO. 16 AND
THE JACOB AARON SURVEY, ABSTRACT NO. 15, PARKER COUNTY, TEXAS.

SHEET 2 OF 3

PTM 2 D:\SRVYBM\18216SB.ZAK