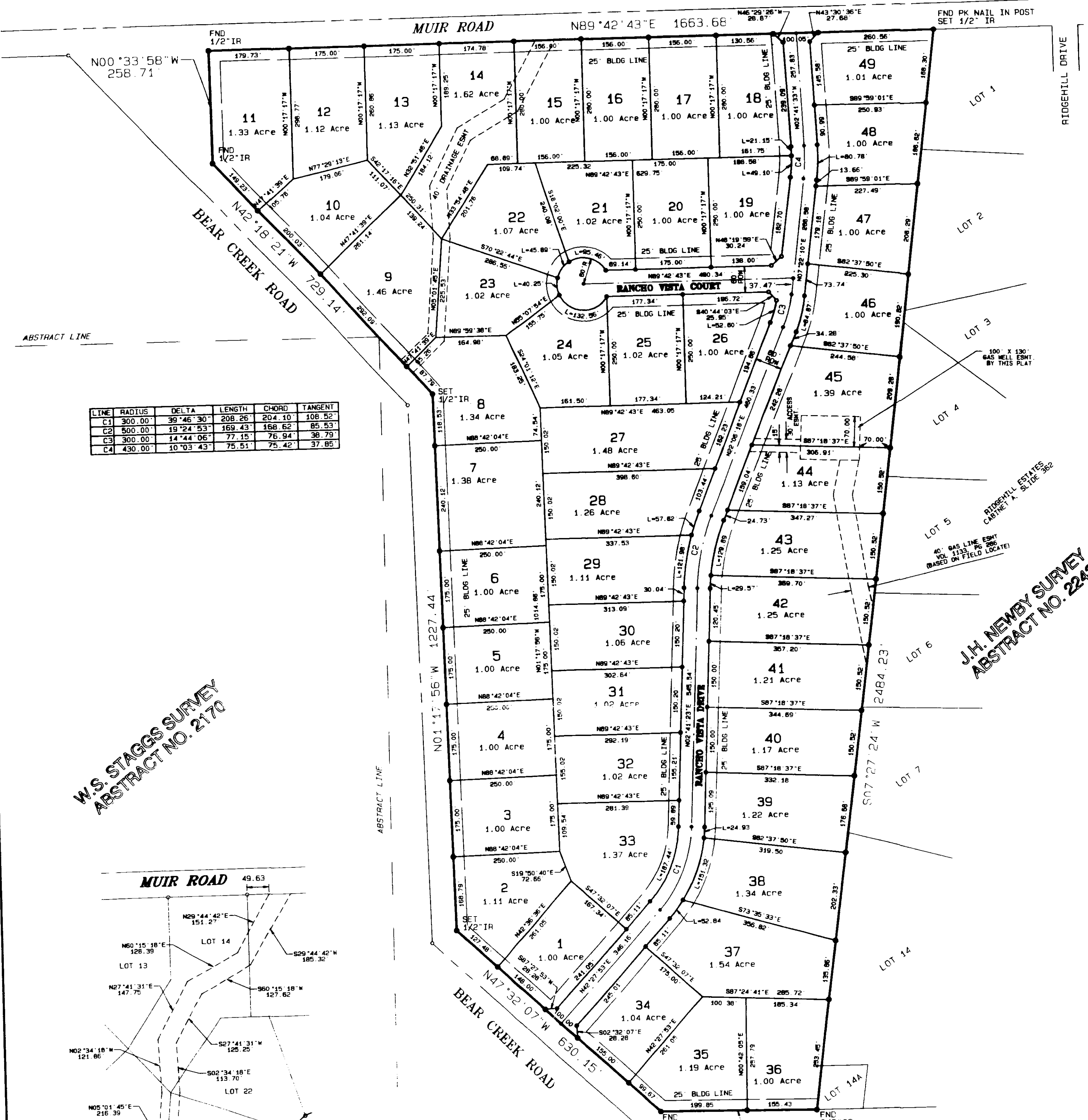


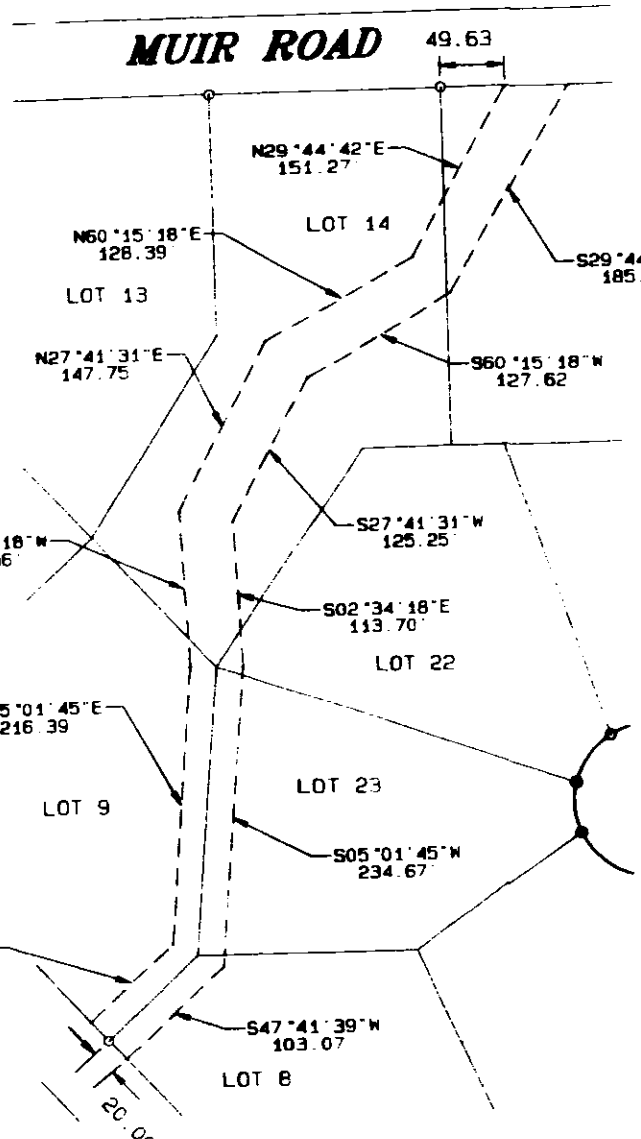
C-292



LINE	RADIUS	DELTA	LENGTH	CHORD	TANGENT
C1	300.00'	39°46'30"	208.26'	204.10'	108.52'
C2	500.00'	19°24'53"	169.43'	168.62'	85.53'
C3	300.00'	14°44'06"	77.15'	76.94'	38.79'
C4	430.00'	10°03'43"	75.51'	75.42'	37.85'

W.S. STAGGS SURVEY
ABSTRACT NO. 2170

J.H. NEWBY SURVEY
ABSTRACT NO. 2243



DETAIL
40' DRAINAGE EASEMENT

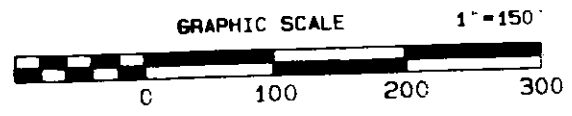
A.S. WORRALL SURVEY
ABSTRACT NO. 1655

ACCT. NO.: 16559
SCH. DIST.: AL
CITY: LD
MAP NO.: 111

FINAL PLAT
RANCHO VISTA ESTATES
AN ADDITION TO PARKER COUNTY, TEXAS
J. H. NEWBY SURVEY, ABSTRACT NO. 2243
PARKER COUNTY, TEXAS

MAY 2005

SHEET 2 OF 2



Doc 00663963 OR 2349 Pp 1524
FILES AND RECORDS
OFFICIAL PUBLIC RECORDS
DATE: JUN 20, 2005 AT 12:00
REGISTERED MAPS: 16559
BY: [Signature]
COUNTY CLERK
PARKER COUNTY
TX 75001