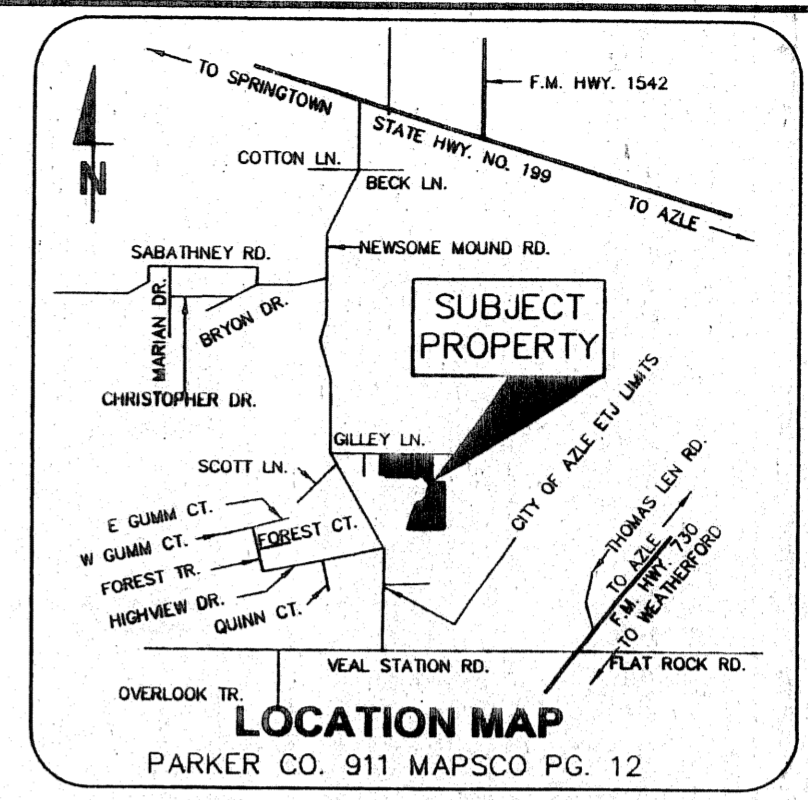
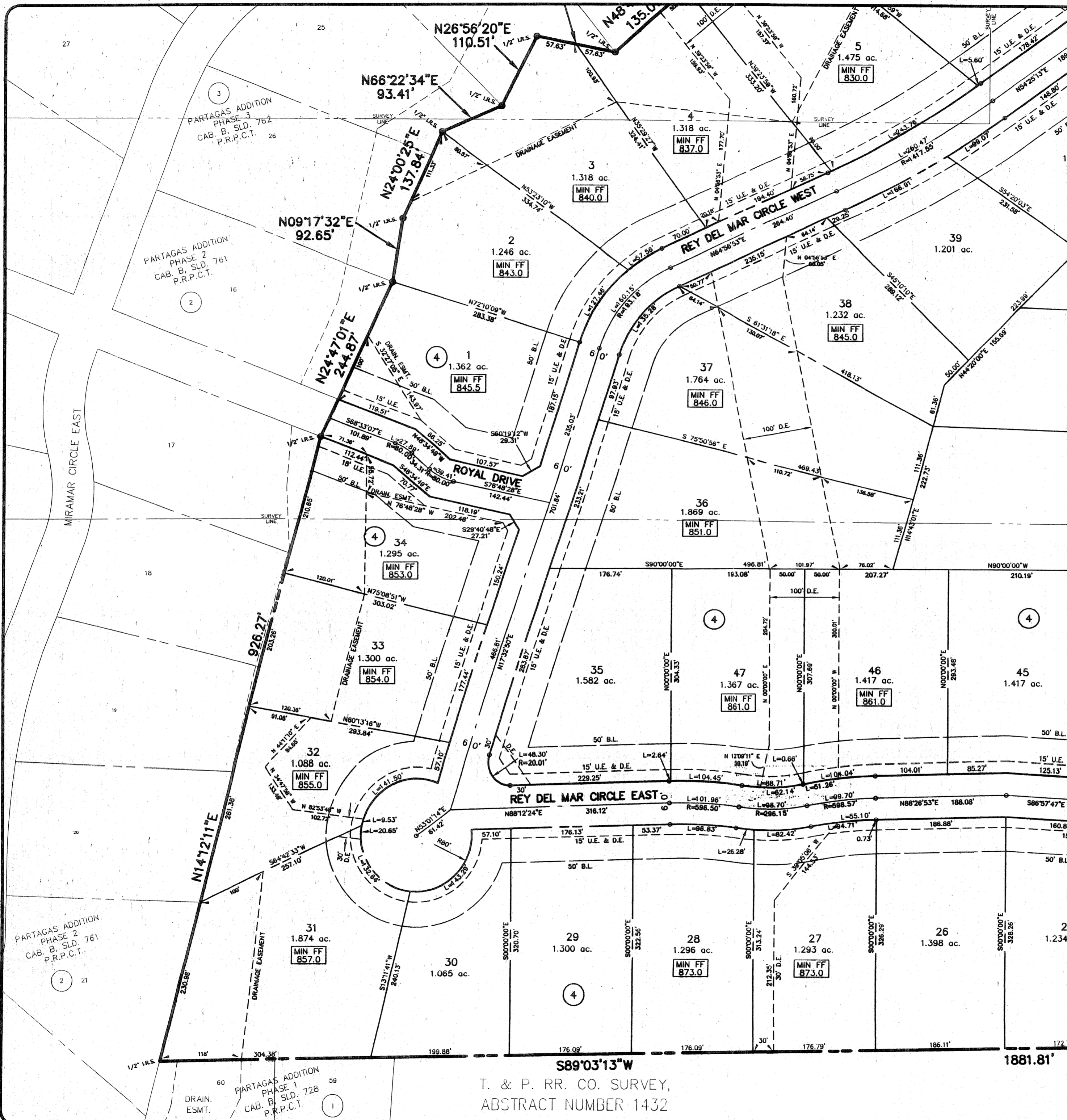
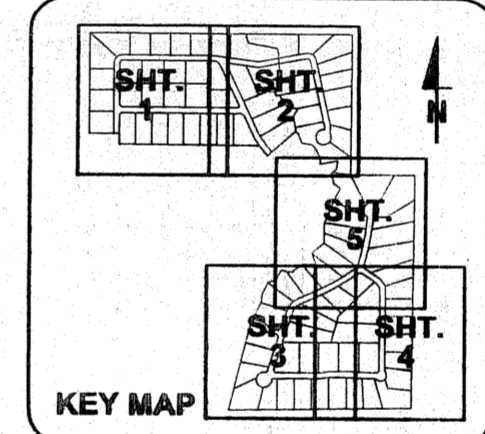
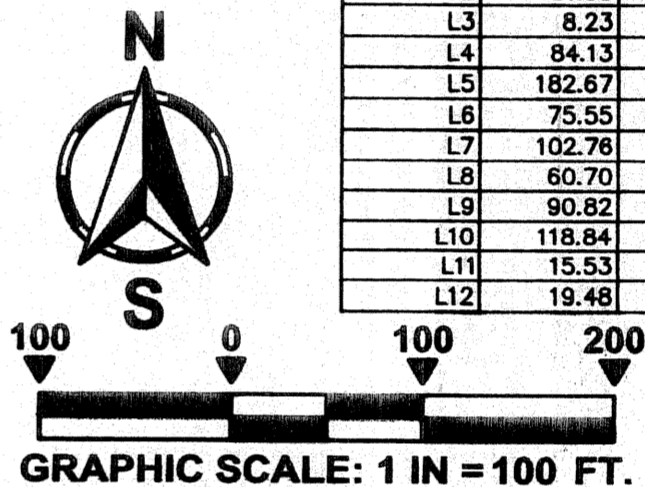


C512



LINE	LENGTH	BEARING
L1	11.50	N68°53'51\"/>



Doc# 624829  
Book 2502 Page 630

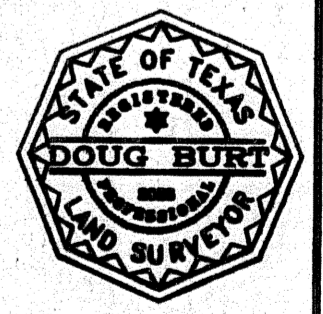
ACCT. NO.: 16075  
SCH. DIST.: AZ  
CITY: CO  
MAP NO.: M-9

FINAL PLAT  
**PARTAGAS ADDITION**  
**LOTS 1-47, BLOCK 4**  
**LOTS 1-48 BLOCK 5**  
**PHASE FOUR**

BEING 152.753 ACRES OF LAND IN THE:  
ISAAC H. MEEK ABSTRACT NUMBER 894,  
MRS. E. A. CLIFTON ABSTRACT NUMBER 1726,  
T. & P. RR. SURVEY, ABSTRACT NUMBER 1432,  
PARKER COUNTY, TEXAS

JULY 19, 2006

2. OWNER / DEVELOPER PARTAGAS PROPERTIES, LTD. 3916 ANN ARBOR COURT FORT WORTH, TEXAS 76109  
SURVEYOR TEXAS GEOSPATIAL 117 JOHN ST. ALEDO, TEXAS 76008 (817) 441-6199 (817) 441-6805 fax



**CivilSolutions Inc**  
Engineers Surveyors Planners  
P.O. Box 100247, Fort Worth, Texas, 76185  
(817) 423-0060 (817) 346-0520 Fax