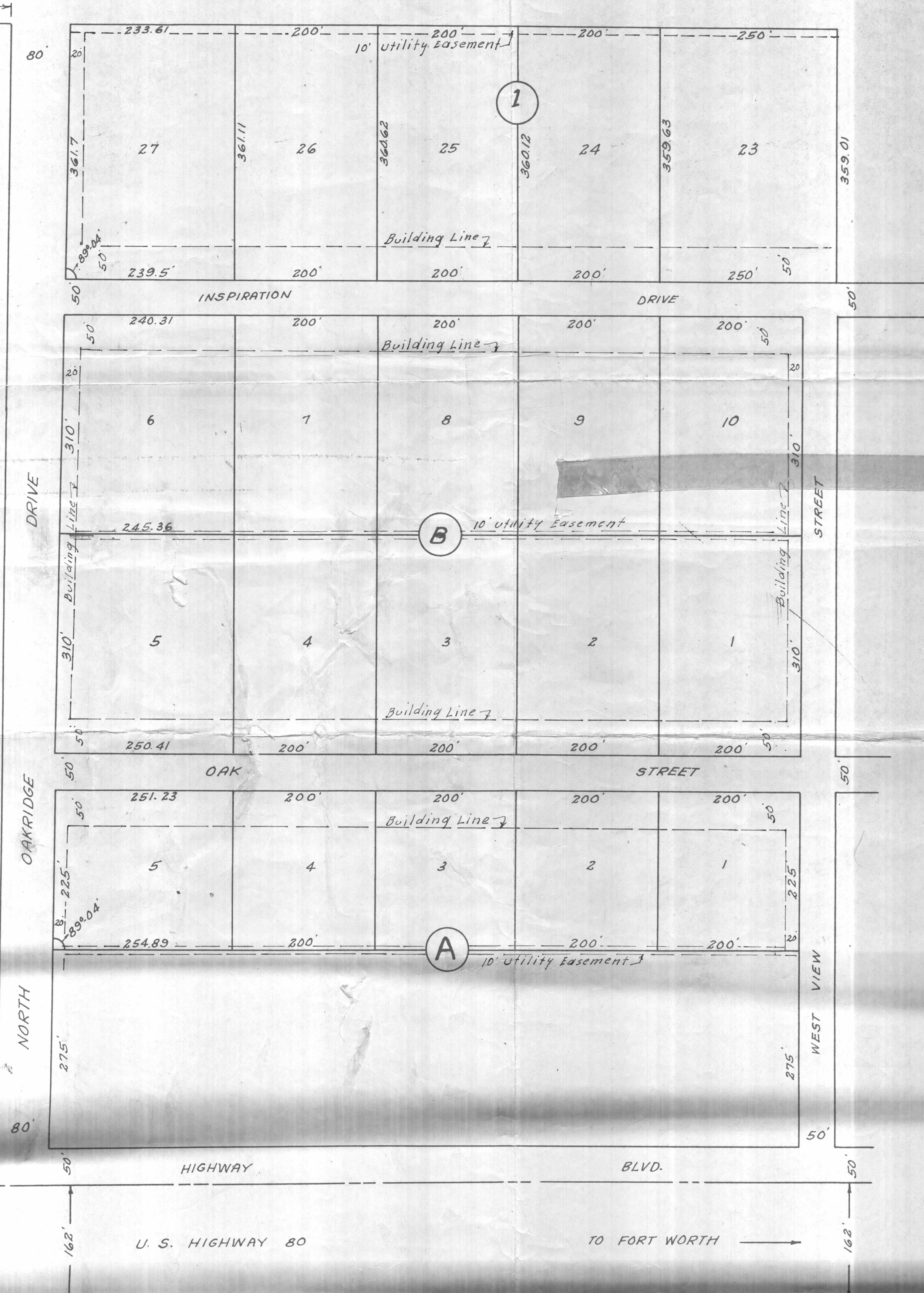


499.96
 N.W. Corner
 David Eddleman sur.
 Abstract 440



MAP
 Showing Block 1, Block A and
 Block B, same being an extension
 of Oak Ridge Addition and being a
 part of the David Eddleman Survey,
 Abstract 440 in Parker County, Texas.
 Surveyed February 25 1955
 By L.C. McCANLIE
 Parker County Surveyor.

RECEIVED AND FILED
 FOR RECORD
 At 8 o'clock A.M.
 MAR 29 1955 and recorded same day
 ORVILLE MILBURN, County Clerk
 PARKER COUNTY, TEXAS
 BY _____ DEPUTY

PCA-55

Scale: 1" = 100'