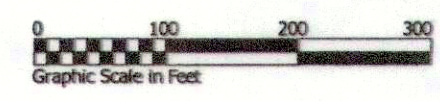
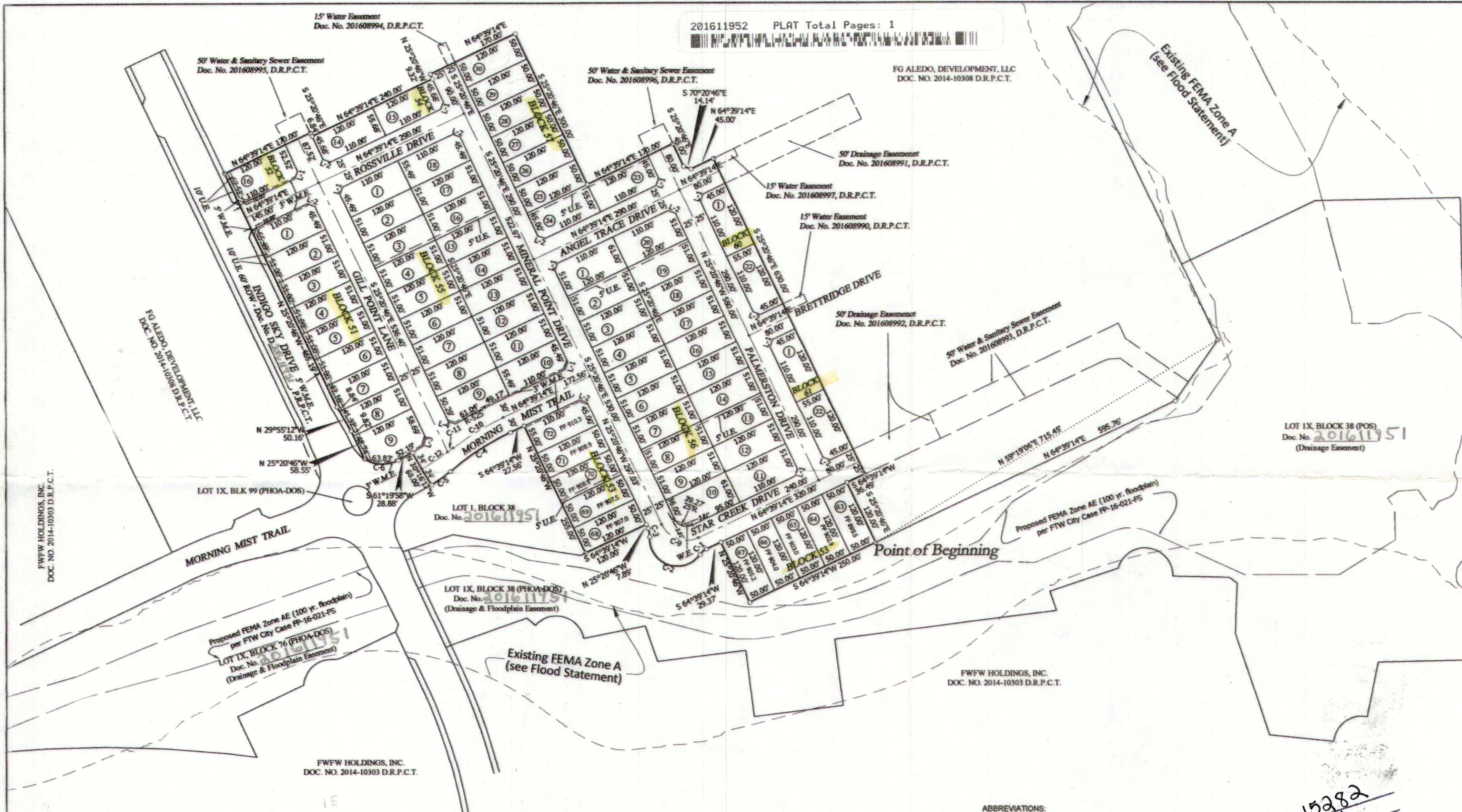


201611952 PLAT Total Pages: 1



MILLER SURVEYING EST. 1985

DEVELOPMENT TABLE

Total Acreage	-	14.651 Acres
Total number of residential lots	-	72
Smallest residential lot	-	8,221 SF
Total ROW Dedication	-	252,283 SF (5.79 Ac)
Density	-	2.85 lots per acre

Note: All boundary corners are marked with 1/2" MILLER 5665" capped steel rods unless noted otherwise.

W.M.E. = Wall & Wall Maintenance Easement.
 U.E. = Utility Easement
 W.E. = Water Easement
 PHOA-DOS = Private Home Owners Association / Developer Open Space
 D.R.P.C.T. = Deed Records, Parker County, Texas

LOT IX, BLOCK 38 (POS)
 Doc. No. 201611951
 (Drainage Easement)

Proposed FEMA Zone AE (100 yr. floodplain)
 per FTW City Case PP-16-021-FS

Existing FEMA Zone A
 (see Flood Statement)

Point of Beginning

FWFW HOLDINGS, INC.
 DOC. NO. 2014-10303 D.R.P.C.T.

FG Aledo Development, LLC - a Texas limited liability company
 3045 Lackland Road
 Fort Worth, Texas 76116
 817-925-9297
 Contact: Kim Gill, President

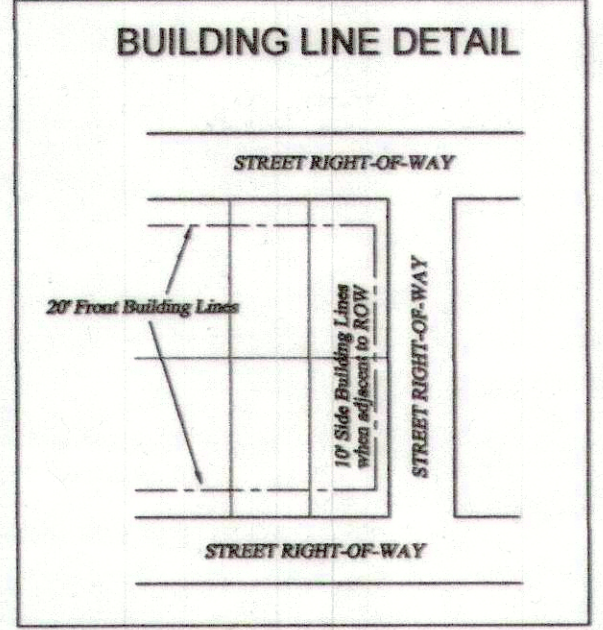
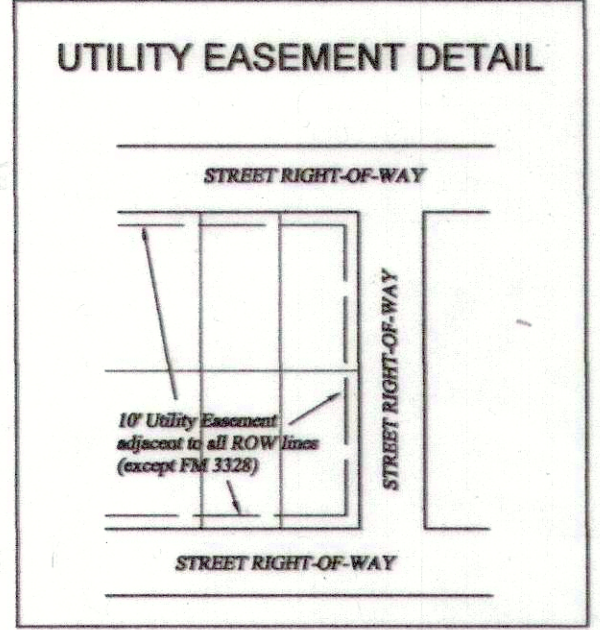


ABBREVIATIONS:
 HOA-DOS = Home Owners Association / Developer Open Space
 D.R.P.C.T. = Deed Records, Parker County, Texas

ACCT. NO.: 15282
 SCH. DIST.: Aledo
 CITY: M-15
 MAP NO.:

L-1 N 19°39'14"E 14.14'
 L-2 S 70°20'46"E 14.14'
 L-3 N 15°37'07"E 15.10'
 L-4 S 73°57'00"E 13.23'

Curve	Length	Radius	Cent. Angle	Chord
C-1	15.64'	30.50'	29°22'58"	S 49°57'45"W 15.47'
C-2	129.82'	50.00'	148°45'55"	N 70°20'46"W 96.31'
C-3	15.64'	30.50'	29°22'58"	N 10°39'17"W 15.47'
C-4	129.64'	480.00'	15°28'28"	S 56°55'00"W 129.24'
C-5	42.35'	230.00'	10°32'57"	S 54°27'15"W 42.29'
C-6	63.83'	62.22'	58°46'57"	N 87°40'24"W 61.07'
C-7	29.95'	33.50'	51°13'42"	N 89°51'25"W 28.96'
C-8	19.07'	86.54'	12°20'28"	N 70°54'54"W 19.03'
C-9	78.54'	50.00'	90°00'00"	S 70°20'46"E 70.71'
C-10	106.54'	510.00'	11°58'08"	S 58°40'10"W 106.34'
C-11	11.91'	550.00'	01°14'25"	S 53°18'18"W 11.91'
C-12	55.71'	550.00'	05°48'12"	S 56°49'37"W 55.68'



MILLER
Surveying, Inc.
 Commercial • Residential • Municipal
 430 Mid Cities Blvd. 817-577-1052
 Hurst, Texas 76054 TxDot No. 10100400
 MillerSurvey.net

MORNINGSTAR

an addition to
PARKER COUNTY, TEXAS
 Consisting of 72 lots and being 14.649 acres of land out of the
 P. J. McClary Survey, Abstract No. 907
 Prepared in October 2015

SHEET ONE OF TWO

D-560

20907.001.000.00