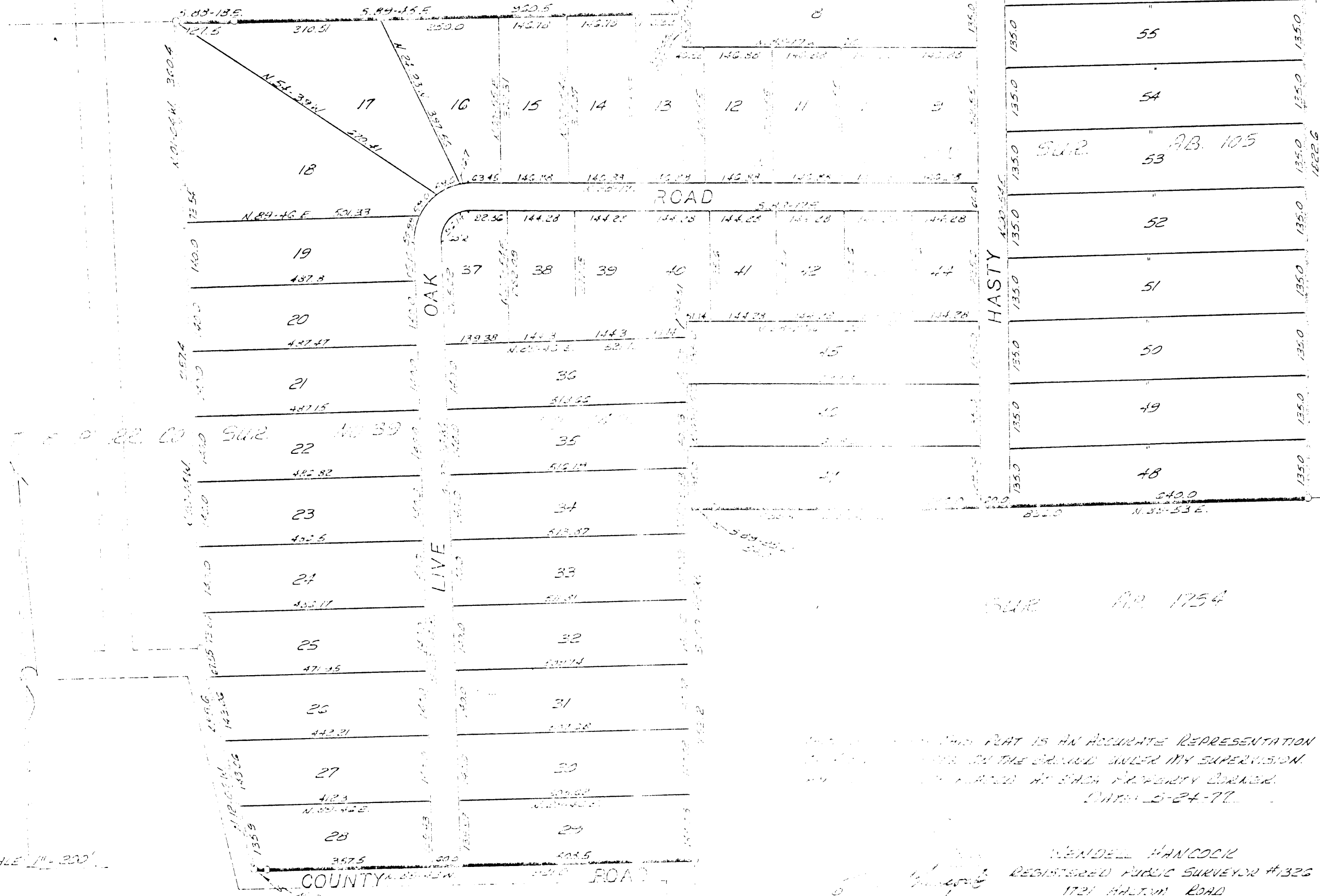


101.47 ACRES
 PLAT SHOWING
 MIDWAY PROPERTIES ADDITION

A SUBDIVISION OUT OF THE T.
 & P. RR. CO. SURVEY, NO. 39, AB.
 1426, AND THE W.C. BURTON SUR-
 VEY, AB. 105, IN PARKER COUN-
 TY, TEXAS.

R 1 CREEKMORE SUR AB. 398



50576

RECEIVED AND FILED
 FOR RECORD
 At 10:45 O'Clock A.M.
 MAY 27 1977

T. H. "Tommy" McDANIEL, Co. Clerk
 PARKER COUNTY, TEXAS
 By: *[Signature]* Deputy

STATE OF TEXAS
 COUNTY OF PARKER
 I hereby certify that this instrument was
 filed on the date and time stamped here-
 on by me and was duly recorded on the
 27 day of May A.D., 1977, in
 Vol. 36A, page 12, of the Platt
 records of Parker, Texas



J. H. "Tommy" McDaniel

County Clerk, Parker
 County, Texas

APPROVED BY COMMISSIONERS COURT
 PARKER COUNTY TEXAS
 DATE: 5/24/77
 BY: *[Signature]*
 BY: *[Signature]*
 BY: *[Signature]*
 BY: *[Signature]*

THIS PLAT IS AN ACCURATE REPRESENTATION
 OF THE LAND UNDER MY SUPERVISION
 AND I HAVE FILED AN OATH OF OFFICE
 DATED 5-24-77.

WENDELL HANCOCK
 REGISTERED PUBLIC SURVEYOR #326
 1724 HASTY ROAD
 FORT WORTH TEXAS 76107
 834-2243