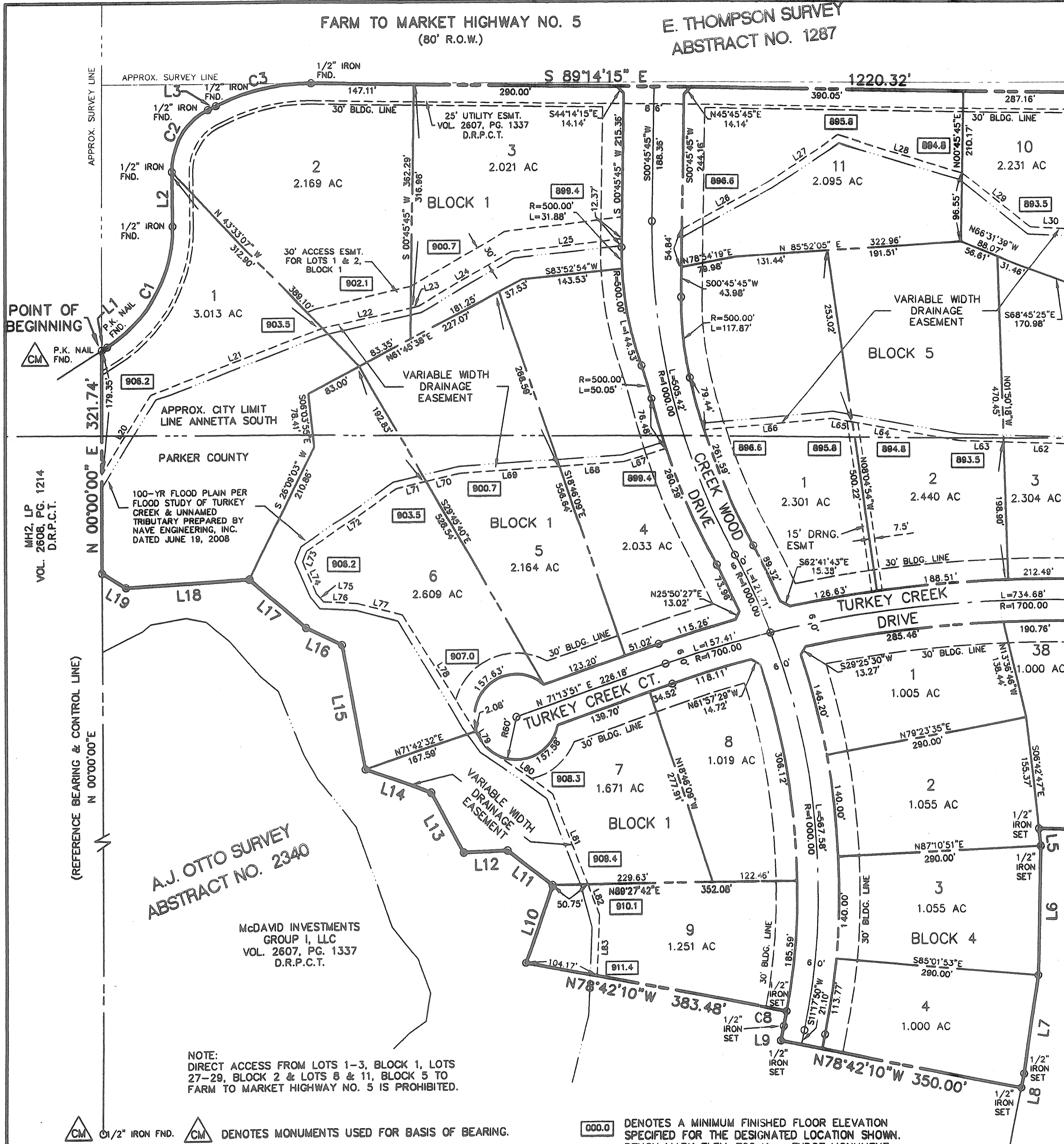
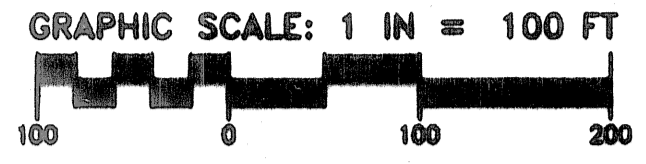


FARM TO MARKET HIGHWAY NO. 5
(80' R.O.W.)

E. THOMPSON SURVEY
ABSTRACT NO. 1287

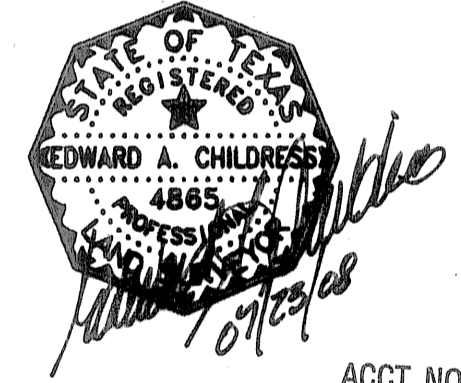


C-726



MATCH LINE

MATCH LINE



ACCT. NO.: 14983
SCH. DIST.: AL
CITY: CO
MAP NO.: L-19

FINAL PLAT

**LOTS 1-9, BLOCK 1;
LOTS 23-29, BLOCK 2;
LOTS 1-4 & 31-38, BLOCK 4;
LOTS 1-11, BLOCK 5
McDAVID SPRINGS**

BEING 77.663 ACRES OF LAND SITUATED IN THE
A.J. OTTO SURVEY, ABSTRACT NUMBER 2340 &
THE I&GNJ RR CO. SURVEY, ABSTRACT NUMBER 1783
ANNETTA SOUTH & PARKER COUNTY, TEXAS

PREPARED JUNE 4, 2008

SD Engineering, Inc.
Site Development Engineering

PO Box 1367 Aledo, TX 76008-1367
(817) 441-6400 Fax (817) 441-6085
www.sd-engineering.com

SHEET 2 OF 5

A.J. OTTO SURVEY
ABSTRACT NO. 2340

McDAVID INVESTMENTS
GROUP I, LLC
VOL. 2607, PG. 1337
D.R.P.C.T.

NOTE:
DIRECT ACCESS FROM LOTS 1-3, BLOCK 1, LOTS
27-29, BLOCK 2 & LOTS 8 & 11, BLOCK 5 TO
FARM TO MARKET HIGHWAY NO. 5 IS PROHIBITED.

000.0 DENOTES A MINIMUM FINISHED FLOOR ELEVATION
SPECIFIED FOR THE DESIGNATED LOCATION SHOWN.
BENCH MARK ELEV. 792.41 - TXDOT MONUMENT
ON TOP OF BRIDGE ABUTMENT, N/E CORNER OF
BRIDGE, CLEAR FORK OF TRINITY RIVER @ FM 5,
S/W OF ALEDO, TX.

CM 1/2" IRON FND. CM DENOTES MONUMENTS USED FOR BASIS OF BEARING.
BASIS OF BEARING IS THE WEST LINE OF THE McDAVID
INVESTMENTS GROUP I, LLC TRACT DESCRIBED IN DEED
RECORDED IN VOLUME 2607, PAGE 1337, DEED RECORDS,
PARKER COUNTY, TEXAS

DF0191 / 072500 / EVB / 06-01-08 / FP PHASE I REV 2