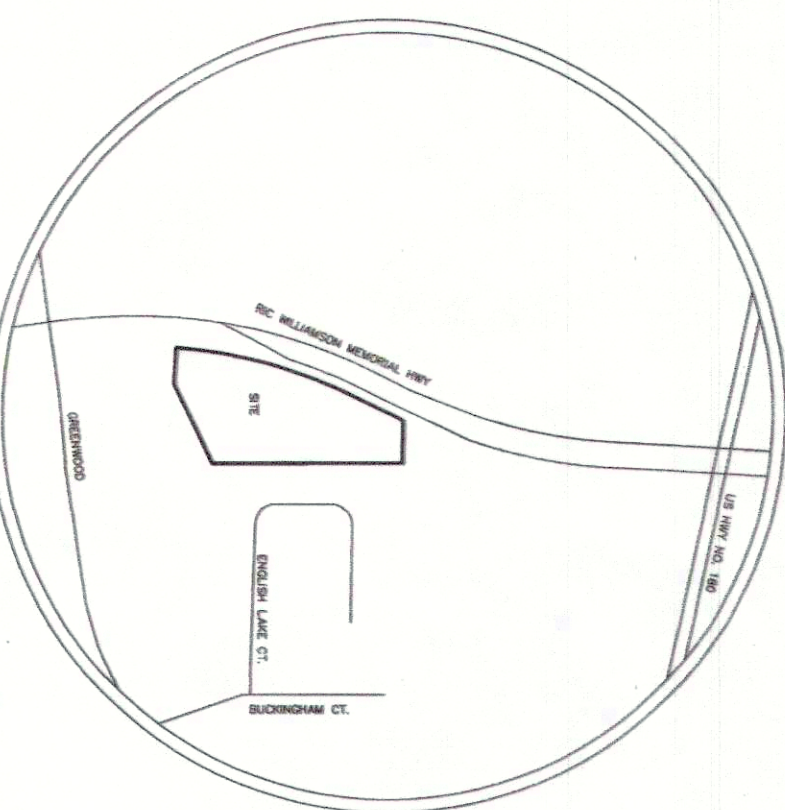


FILED AND RECORDED
OFFICIAL PUBLIC RECORDS

Jeane Brunson
201615623
07/15/2016 03:45 PM
Fee: 76.00
Jeane Brunson, County Clerk
Parker County, Texas
PLAT



CURVE TABLE

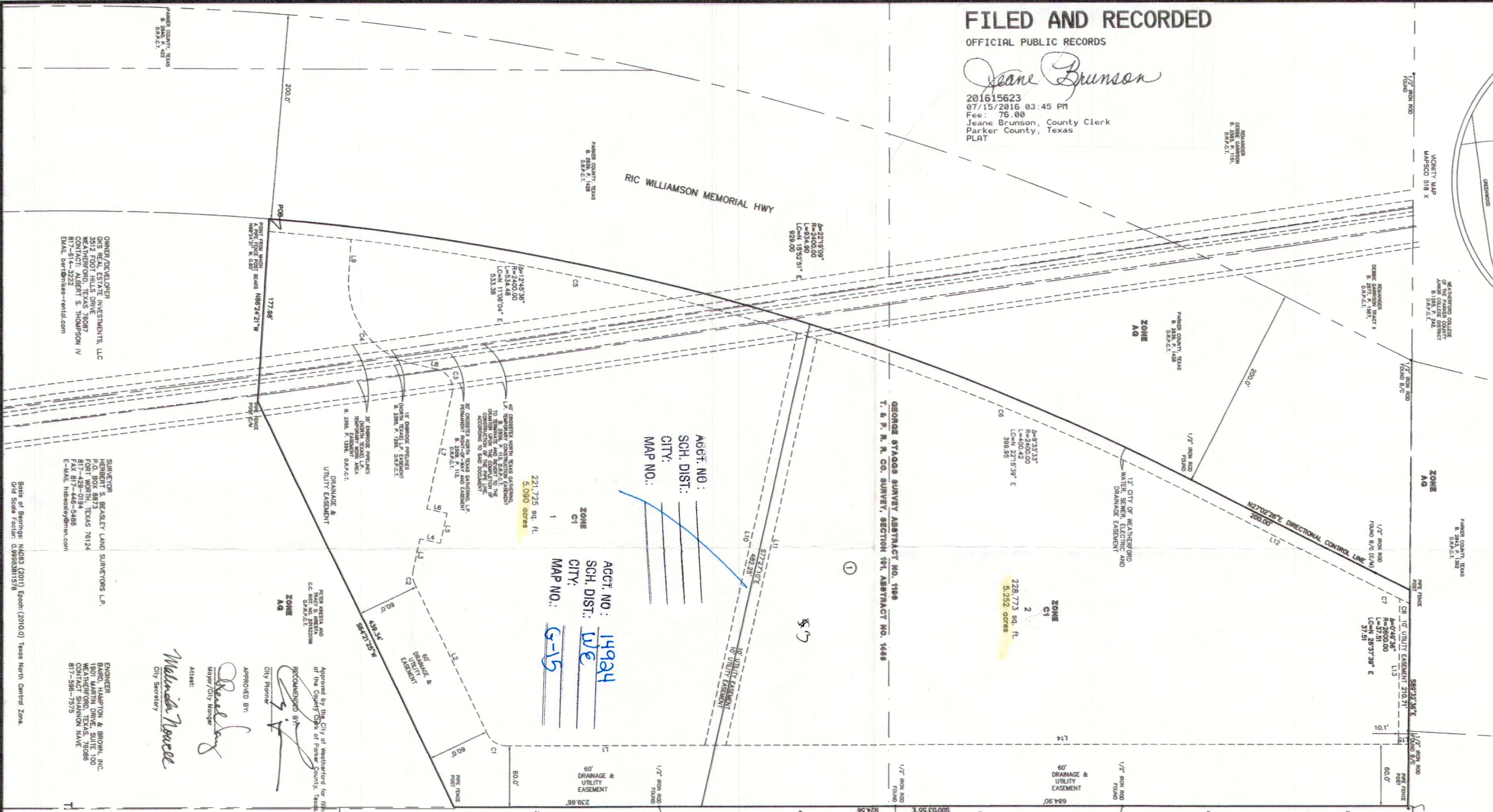
CURVE NO.	DELTA	RADIUS	LENGTH	CHORD	CHORD-BEARING
C1	64°29'20"	20.00	22.49	N22°09'45"E	E1.32
C2	38°02'32"	20.00	13.49	N83°22'11"E	E3.04
C3	39°37'37"	20.00	11.14	S27°42'37"E	E2.28
C4	11°45'00"	20.00	3.77	S77°29'03"E	E1.13
C5	10°26'41"	2589.00	442.26	S11°27'37"E	E414.83
C6	91°17'37"	2589.00	397.34	S22°43'37"E	E385.92
C7	0°42'36"	2612.00	32.36	N62°41'09"E	E32.36
C8	0°14'37"	2612.00	11.00	N22°12'28"E	E11.00

LINE TABLE

LINE	LENGTH	BEARING
L1	192.44	N00°03'50"W
L2	163.27	N44°11'29"E
L3	31.92	S77°29'03"E
L4	20.00	S11°27'37"E
L5	20.00	N42°24'37"E
L6	20.00	S77°29'03"E
L7	14.50	N42°24'37"E
L8	22.91	N42°24'37"E
L9	28.10	S96°24'21"E
L10	405.59	S77°29'03"E
L11	420.00	S27°02'26"W
L12	142.30	N69°22'26"W
L13	451.77	N00°03'50"W
L14	11.00	N00°03'50"W

REGISTERED PROFESSIONAL SURVEYORS
HERBERT S. BEASLEY
LAND SURVEYORS L.P.
• LAND • TOPOGRAPHIC
• CONSTRUCTION SURVEYING
FIRM NO. 10094900
METRO 817-429-0194
FAX 817-446-5488
hbeasley@hsm.com

P. O. BOX 8873
FORT WORTH, TEXAS 76124



AGCT. NO.: 14944
SCH. DIST.: WE
CITY: G-15
MAP NO.: G-15

AGCT. NO.: 14944
SCH. DIST.: WE
CITY: G-15
MAP NO.: G-15

AGCT. NO.: 14944
SCH. DIST.: WE
CITY: G-15
MAP NO.: G-15

Approved by the City of Weatherford for filing of the plat of the County Clerk of Parker County, Texas.

RECOMMENDED BY:
City Planning

APPROVED BY:
Mayor/City Manager
Attest:
Melinda Powell
City Secretary

Approved by the City of Weatherford for filing of the plat of the County Clerk of Parker County, Texas.

RECOMMENDED BY:
City Planning

APPROVED BY:
Mayor/City Manager
Attest:
Melinda Powell
City Secretary

Approved by the City of Weatherford for filing of the plat of the County Clerk of Parker County, Texas.

RECOMMENDED BY:
City Planning

APPROVED BY:
Mayor/City Manager
Attest:
Melinda Powell
City Secretary

Approved by the City of Weatherford for filing of the plat of the County Clerk of Parker County, Texas.

RECOMMENDED BY:
City Planning

APPROVED BY:
Mayor/City Manager
Attest:
Melinda Powell
City Secretary

Approved by the City of Weatherford for filing of the plat of the County Clerk of Parker County, Texas.

RECOMMENDED BY:
City Planning

APPROVED BY:
Mayor/City Manager
Attest:
Melinda Powell
City Secretary

Approved by the City of Weatherford for filing of the plat of the County Clerk of Parker County, Texas.

RECOMMENDED BY:
City Planning

APPROVED BY:
Mayor/City Manager
Attest:
Melinda Powell
City Secretary

Approved by the City of Weatherford for filing of the plat of the County Clerk of Parker County, Texas.

RECOMMENDED BY:
City Planning

APPROVED BY:
Mayor/City Manager
Attest:
Melinda Powell
City Secretary

Approved by the City of Weatherford for filing of the plat of the County Clerk of Parker County, Texas.

RECOMMENDED BY:
City Planning

APPROVED BY:
Mayor/City Manager
Attest:
Melinda Powell
City Secretary

Approved by the City of Weatherford for filing of the plat of the County Clerk of Parker County, Texas.

RECOMMENDED BY:
City Planning

APPROVED BY:
Mayor/City Manager
Attest:
Melinda Powell
City Secretary

Approved by the City of Weatherford for filing of the plat of the County Clerk of Parker County, Texas.

RECOMMENDED BY:
City Planning

APPROVED BY:
Mayor/City Manager
Attest:
Melinda Powell
City Secretary

Prepared March, 2016
Page of Side
572
Volume of Cabinet

being 10.342 acres of land located in the George Staggs Survey, Abstract No. 1196, and the & P. R. R. Co. Survey, Section 191, Abstract No. 1453, Parker County, Texas.

being 10.342 acres of land located in the George Staggs Survey, Abstract No. 1196, and the & P. R. R. Co. Survey, Section 191, Abstract No. 1453, Parker County, Texas.

being 10.342 acres of land located in the George Staggs Survey, Abstract No. 1196, and the & P. R. R. Co. Survey, Section 191, Abstract No. 1453, Parker County, Texas.

being 10.342 acres of land located in the George Staggs Survey, Abstract No. 1196, and the & P. R. R. Co. Survey, Section 191, Abstract No. 1453, Parker County, Texas.

being 10.342 acres of land located in the George Staggs Survey, Abstract No. 1196, and the & P. R. R. Co. Survey, Section 191, Abstract No. 1453, Parker County, Texas.

being 10.342 acres of land located in the George Staggs Survey, Abstract No. 1196, and the & P. R. R. Co. Survey, Section 191, Abstract No. 1453, Parker County, Texas.

being 10.342 acres of land located in the George Staggs Survey, Abstract No. 1196, and the & P. R. R. Co. Survey, Section 191, Abstract No. 1453, Parker County, Texas.

being 10.342 acres of land located in the George Staggs Survey, Abstract No. 1196, and the & P. R. R. Co. Survey, Section 191, Abstract No. 1453, Parker County, Texas.

being 10.342 acres of land located in the George Staggs Survey, Abstract No. 1196, and the & P. R. R. Co. Survey, Section 191, Abstract No. 1453, Parker County, Texas.

being 10.342 acres of land located in the George Staggs Survey, Abstract No. 1196, and the & P. R. R. Co. Survey, Section 191, Abstract No. 1453, Parker County, Texas.

21196.003.000.00
21453.003.000.00