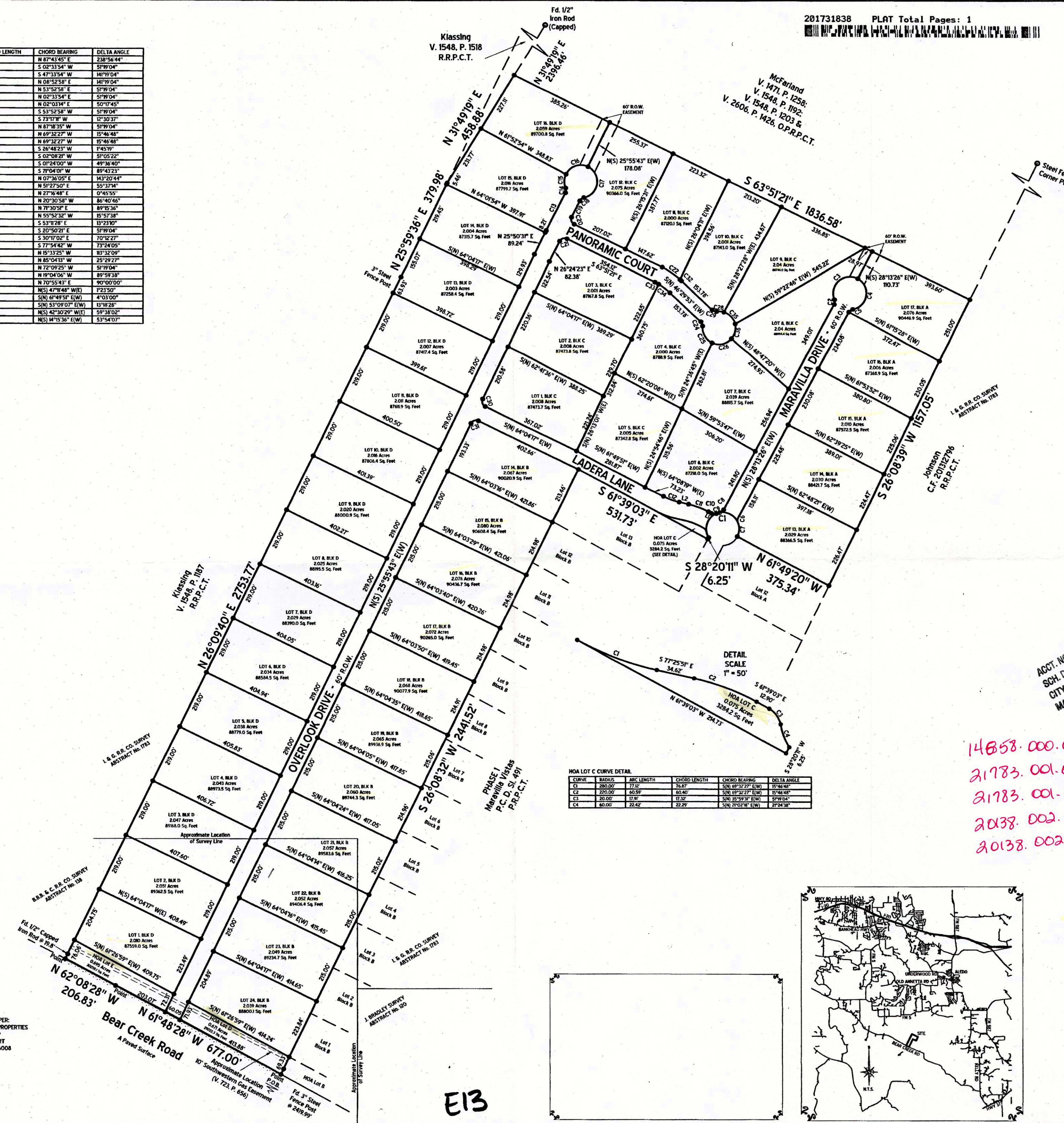


CURVE	RADIUS	ARC LENGTH	CHORD LENGTH	CHORD BEARING	DELTA ANGLE
C1	60.00'	250.22'	104.47'	N 87°43'45" E	238°56'44"
C2	20.00'	17.91'	17.32'	S 02°33'54" W	5°19'04"
C3	60.00'	147.99'	183.23'	S 47°33'54" W	141°09'04"
C4	60.00'	147.99'	183.23'	N 08°52'58" E	141°09'04"
C5	20.00'	17.91'	17.32'	N 53°52'58" E	5°19'04"
C6	20.00'	17.91'	17.32'	N 02°33'54" E	5°19'04"
C7	60.00'	52.67'	50.99'	N 02°03'14" E	5°07'45"
C8	20.00'	17.91'	17.32'	S 53°52'58" W	5°19'04"
C9	60.00'	13.07'	13.07'	S 73°17'18" W	12°30'37"
C10	20.00'	17.91'	17.32'	N 87°18'35" W	5°19'04"
C11	280.00'	77.12'	78.87'	N 69°32'27" W	15°46'48"
C12	220.00'	60.59'	60.40'	N 69°32'27" W	15°46'48"
C13	5000.20'	153.18'	153.18'	S 26°48'23" W	1°45'19"
C14	20.00'	17.83'	17.25'	S 02°08'21" W	5°05'22"
C15	60.00'	51.95'	50.34'	S 01°24'00" W	49°36'40"
C16	60.00'	51.96'	54.65'	S 79°04'00" W	89°43'23"
C17	60.00'	150.8'	133.91'	N 07°36'05" E	143°23'44"
C18	20.00'	19.42'	18.66'	N 51°27'50" E	55°37'34"
C19	4940.20'	65.99'	65.99'	N 27°16'48" E	0°45'55"
C20	20.00'	30.26'	27.45'	N 20°30'58" W	86°40'46"
C21	20.00'	31.16'	28.10'	N 7°30'59" E	89°15'36"
C22	280.00'	78.00'	77.75'	N 55°52'32" W	15°57'38"
C23	220.00'	51.40'	51.29'	S 53°17'28" E	13°23'07"
C24	20.00'	17.91'	17.32'	S 20°50'21" E	5°19'04"
C25	60.00'	73.52'	69.01'	S 30°17'02" E	70°12'27"
C26	60.00'	76.87'	71.72'	S 77°54'42" W	73°24'05"
C27	60.00'	188.89'	100.37'	N 15°33'25" W	183°32'09"
C28	60.00'	28.69'	28.47'	N 85°04'13" W	25°29'27"
C29	20.00'	17.91'	17.32'	N 72°09'25" W	5°19'04"
C30	20.00'	31.41'	28.28'	N 19°04'04" W	89°59'38"
C31	20.00'	31.42'	28.28'	N 70°55'43" E	90°00'00"
C32	280.00'	6.83'	6.83'	S(N) 47°18'48" (E) W	1°23'50"
C33	220.00'	15.55'	15.55'	S(N) 6°49'59" (E) W	4°03'00"
C34	220.00'	31.0'	30.98'	S(N) 53°09'07" (E) W	13°18'28"
C35	60.00'	62.45'	59.87'	S(N) 42°30'29" (E) W	59°38'02"
C36	60.00'	56.45'	54.39'	S(N) 14°15'36" (E) W	53°54'07"

LINE	BEARING	DISTANCE
L1	N(S) 6°39'03" (E) W	12.90'
L2	N(S) 7°25'51" (E) W	34.62'

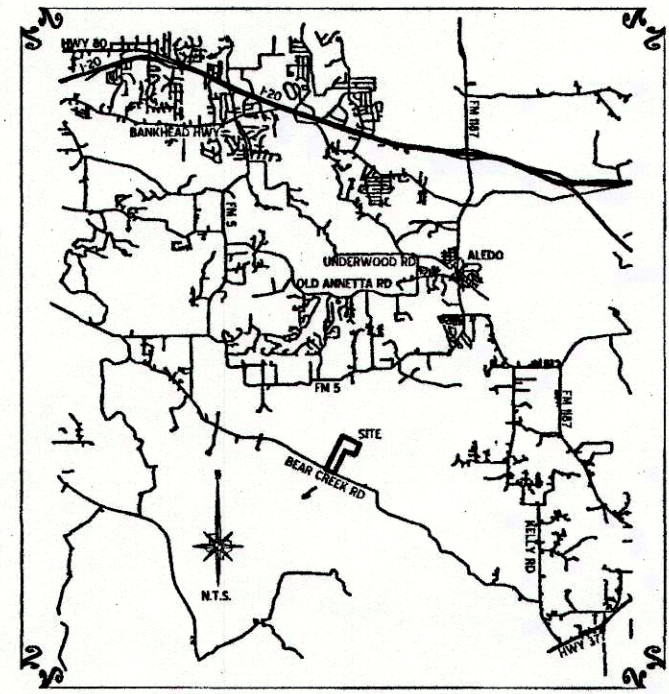
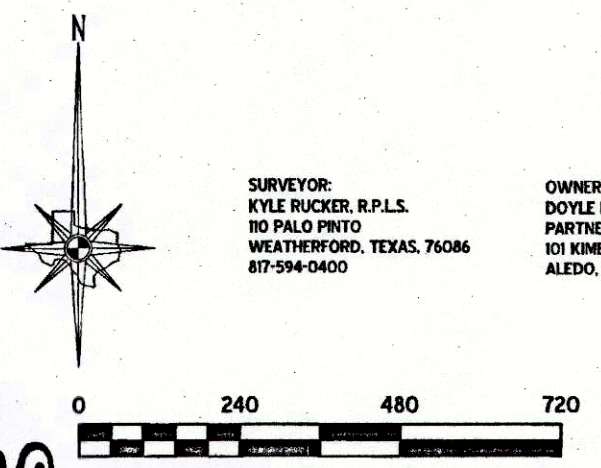


ACCT. NO.: 14858  
 SCH. DIST.: HL  
 CITY: L-19+L-20  
 MAP NO.:

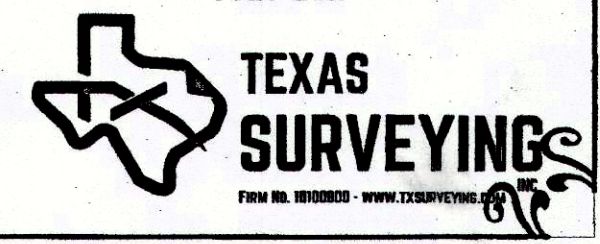
14858.000.000.10  
 21783.001.001.00  
 21783.001.002.00  
 20138.002.000.00  
 20138.002.003.00

**SURVEYOR:**  
 KYLE RUCKER, R.P.L.S.  
 10 PALO PINO  
 WEATHERFORD, TEXAS, 76086  
 817-594-0400

**OWNER/DEVELOPER:**  
 DOYLE HANLEY PROPERTIES  
 PARTNERSHIP, LP  
 101 KIMBRO COURT  
 ALEDO, TEXAS 76008



**FINAL PLAT OF**  
 LOTS 13-17, BLOCK A, LOTS 14-24, BLOCK B,  
 LOTS 1-12, BLOCK C, LOTS 1-16, BLOCK D;  
 & "HOA LOTS C, D, & E"  
**MARAVILLA VISTAS, PHASE 2**  
 AN ADDITION TO  
 PARKER COUNTY, TEXAS  
 BEING 99.514 ACRES SITUATED AND LYING IN THE B.B.B. &  
 C. RR CO. SURVEY, ABSTRACT NO. 138 AND THE I. & G. RR  
 Co. SURVEY, ABSTRACT NO. 1783,  
 PARKER COUNTY, TEXAS.  
 JULY 2017



E13