

MARAVILLA VISTAS

Lots 1-17, Block A
Lots 1-27, Block B
An Addition to Parker County, Texas
being 100,000 acres tract
of land out of the

I. & G.N. R.R. Co. SURVEY, ABSTRACT NO. 1783,
the J. BRADLEY SURVEY, ABSTRACT NO. 120,
and the B.B.B. & C. R.R. Co. SURVEY,
ABSTRACT NO. 138, Parker County, Texas

44 LOTS (TOTAL)
25 Lots (Phase 1)
19 Lots (Phase 2)

OSO COURT 1138 feet (TOTAL)
MARAVILLA DRIVE 3583 feet (TOTAL)
2429 feet (Phase 1) - 1154 feet (Phase 2)

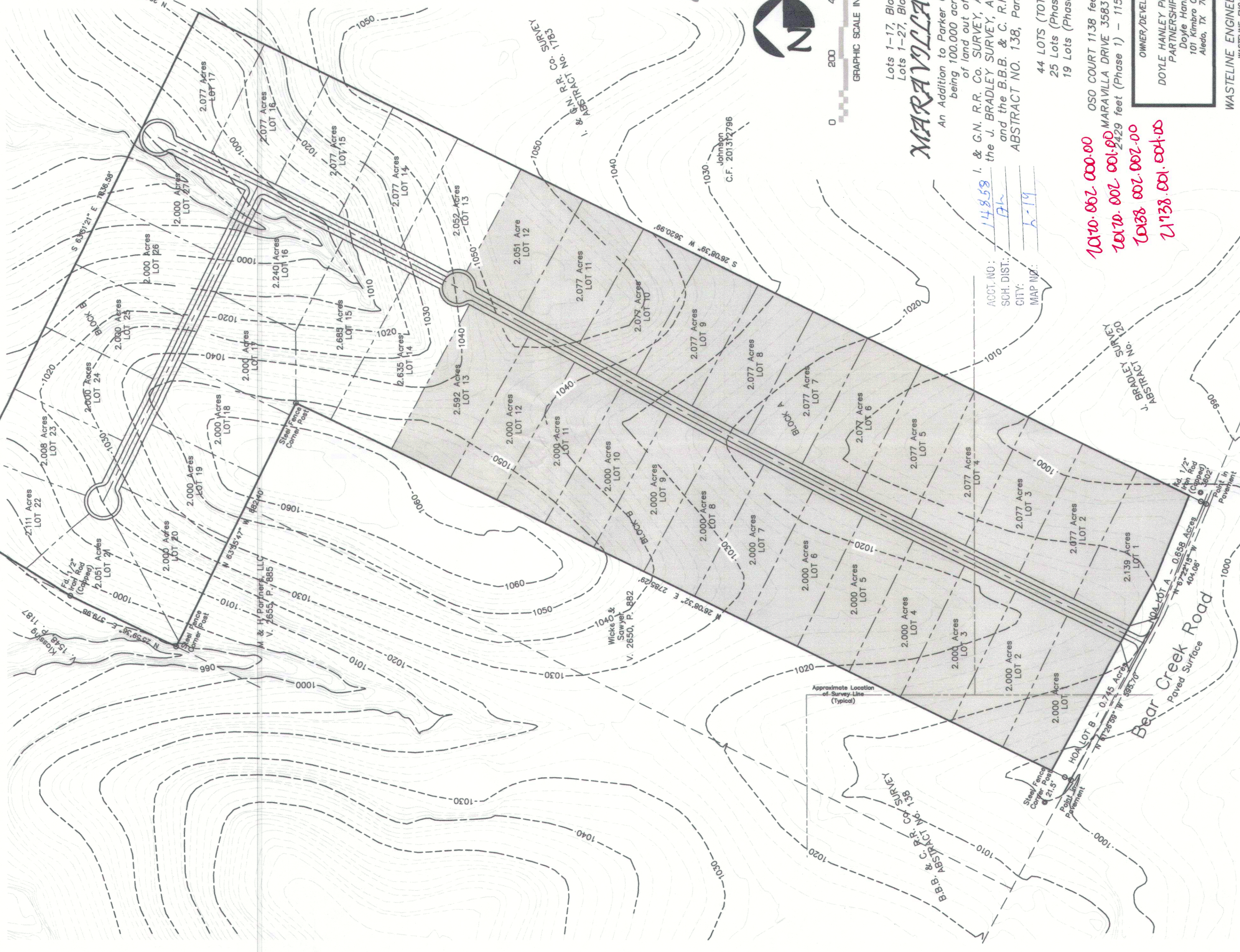
OWNER/DEVELOPER
DOYLE HANLEY PROPERTIES
PARTNERSHIP, L.P.
Doyle Hanley
101 Kimbro Court
Aledo, TX 76008

WASTELINE ENGINEERING, INC.,
WASTELINE-ENG.COM
P.O. BOX #21
208 SOUTH FRONT STREET
ALEDO, TX 76008
Fax: (817)441-1300

0471

Tract "B"
221,151 Acres
Pt. of V. 1471, P. 1258
Pt. of V. 1548, P. 1192
Pt. of V. 1548, P. 1203
All of V. 2806, P. 1428

Klasing
V. 1548, P. 1518



ACCT. NO.: 14859
SCH. DIST.: 7-1
CITY: 2-19
MAP NO.:

10110.002.000.00
10110.002.001.00
10138.002.002.00
21738.001.004.00

P.O.B.