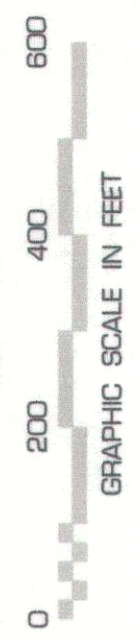
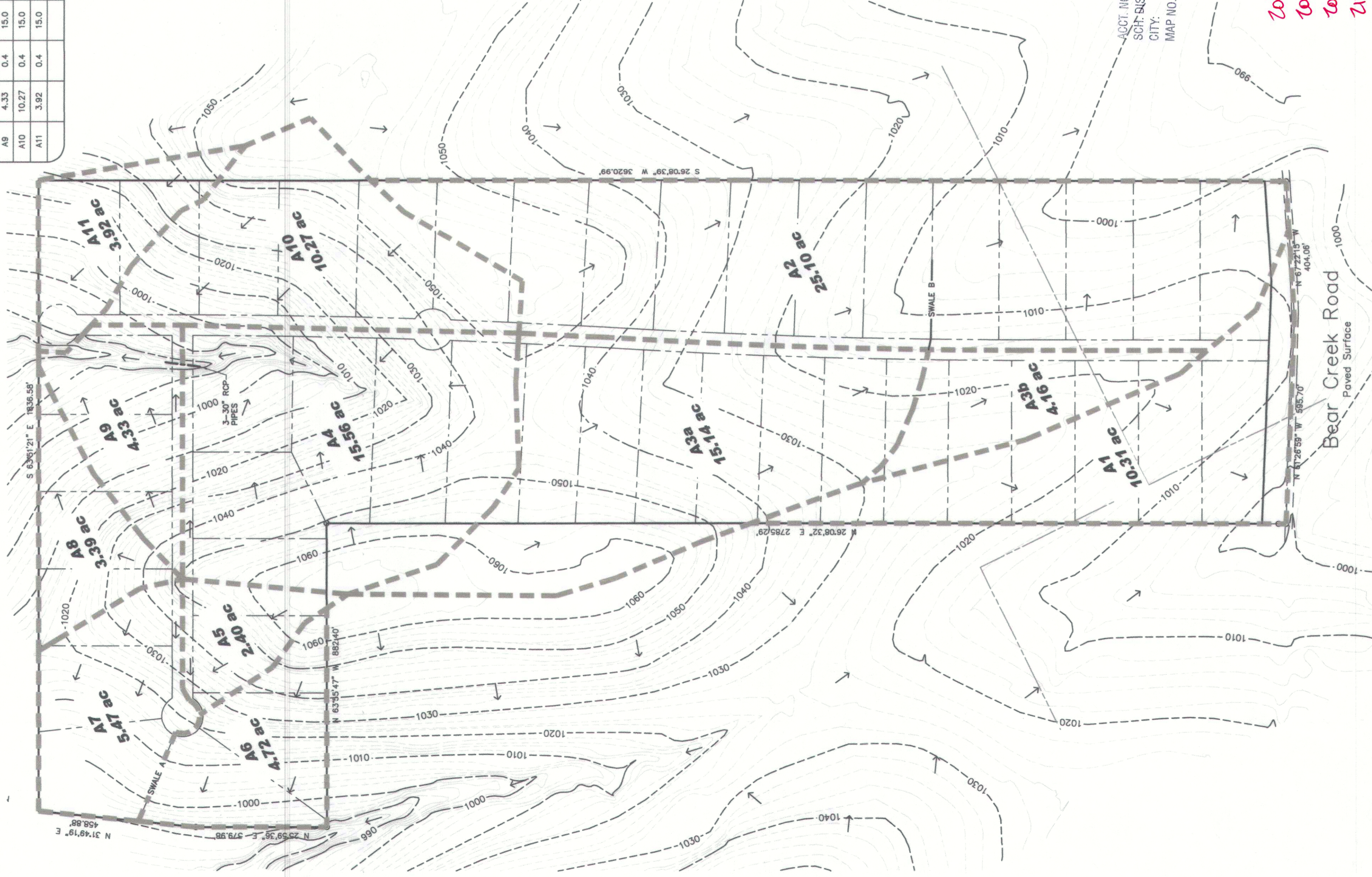


DRAINAGE AREA TABLE - 08/14/2015

D.A. NO.	AREA (AC.)	C	T _c (min.)	I(10)	I(100)	Q(10) (cfs)	Q(100) (cfs)	COMMENTS
A1	10.31	0.4	15.0	6.48	9.6	26.72	39.59	SHEET FLOW TO SOUTHWEST
A2	25.10	0.4	15.0	6.48	9.6	65.06	96.38	SHEET FLOW TO SOUTHEAST
A3a	15.14	0.4	15.0	6.48	9.6	39.24	58.14	DITCH FLOW TO SOUTHWEST
A3b	4.16	0.4	15.0	6.48	9.6	10.78	15.97	DITCH FLOW TO NORTHEAST
A4	15.56	0.4	15.0	6.48	9.6	40.33	59.75	DITCH FLOW TO NORTHEAST
								3-30" pipes at OSO to carry A3 & A4
A5	2.40	0.4	15.0	6.48	9.6	6.22	9.22	DITCH FLOW TO SWALE A
A6	4.72	0.4	15.0	6.48	9.6	12.23	18.12	SHEET FLOW TO NORTHWEST
A7	5.47	0.4	15.0	6.48	9.6	14.18	21.00	SHEET FLOW TO NORTH-NORTHWEST
A8	3.39	0.4	15.0	6.48	9.6	8.79	13.02	SHEET FLOW TO NORTH
A9	4.33	0.4	15.0	6.48	9.6	11.22	16.63	DITCH FLOW TO NORTHEAST
A10	10.27	0.4	15.0	6.48	9.6	26.62	39.44	DITCH FLOW TO NORTHEAST
A11	3.92	0.4	15.0	6.48	9.6	10.16	15.05	SHEET FLOW TO NORTHEAST



MARAVILLA VISTAS

An Addition to Parker County, Texas
 being 100,000 acres tract
 of land out of the
 I. & G.N. R.R. Co. SURVEY, ABSTRACT NO. 1783,
 the J. BRADLEY SURVEY, ABSTRACT NO. 120,
 and the B.B.B. & C. R.R. Co. SURVEY,
 ABSTRACT NO. 138, Parker County, Texas

ACCT. NO.: 14858
 SGT. DIST.: 74
 CITY: _____
 MAP NO.: 2-19

44 LOTS (TOTAL)
 25 Lots (Phase 1)
 19 Lots (Phase 2)

OSO COURT 1138 feet (TOTAL)
 MARAVILLA DRIVE 3583 feet (TOTAL)
 2429 feet (Phase 1) - 1154 feet (Phase 2)

OWNER/DEVELOPER
DOYLE HANLEY PROPERTIES PARTNERSHIP, L.P.
 Doyle Hanley
 101 Kimbra Court
 Aledo, TX 76008

WASTELINE ENGINEERING, INC.,
 WASTELINE-ENG.COM
 P.O. BOX 421
 208 SOUTH FRONT STREET
 ALEDO, TX 76008
 (817)441-1300
 Fax: (817)441-1033
 Texas Registered Engineering Firm #F-1666

D-471