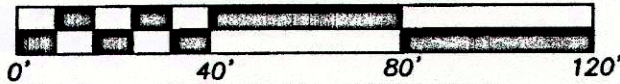


GRAPHIC SCALE: 1"=40'



NOTE: ALL BEARINGS WERE BASED ON GPS OBSERVATIONS, NAD83, TEXAS NORTH CENTRAL 4202 (EPOCH 2011)

| LINE | BEARING | DISTANCE |
|------|-----------------|----------|
| L1 | S 17° 58' 19" W | 10.44' |
| L2 | N 89° 49' 44" E | 26.00' |
| L3 | N 88° 57' 10" E | 64.31' |
| P1 | S 18° 41' 07" W | 10.44' |
| P2 | N 89° 51' 32" E | 25.85' |
| D1 | S 17° 58' 19" W | 10.44' |
| D2 | N 89° 49' 44" E | 26.00' |
| D3 | N 88° 57' 10" E | 64.31' |

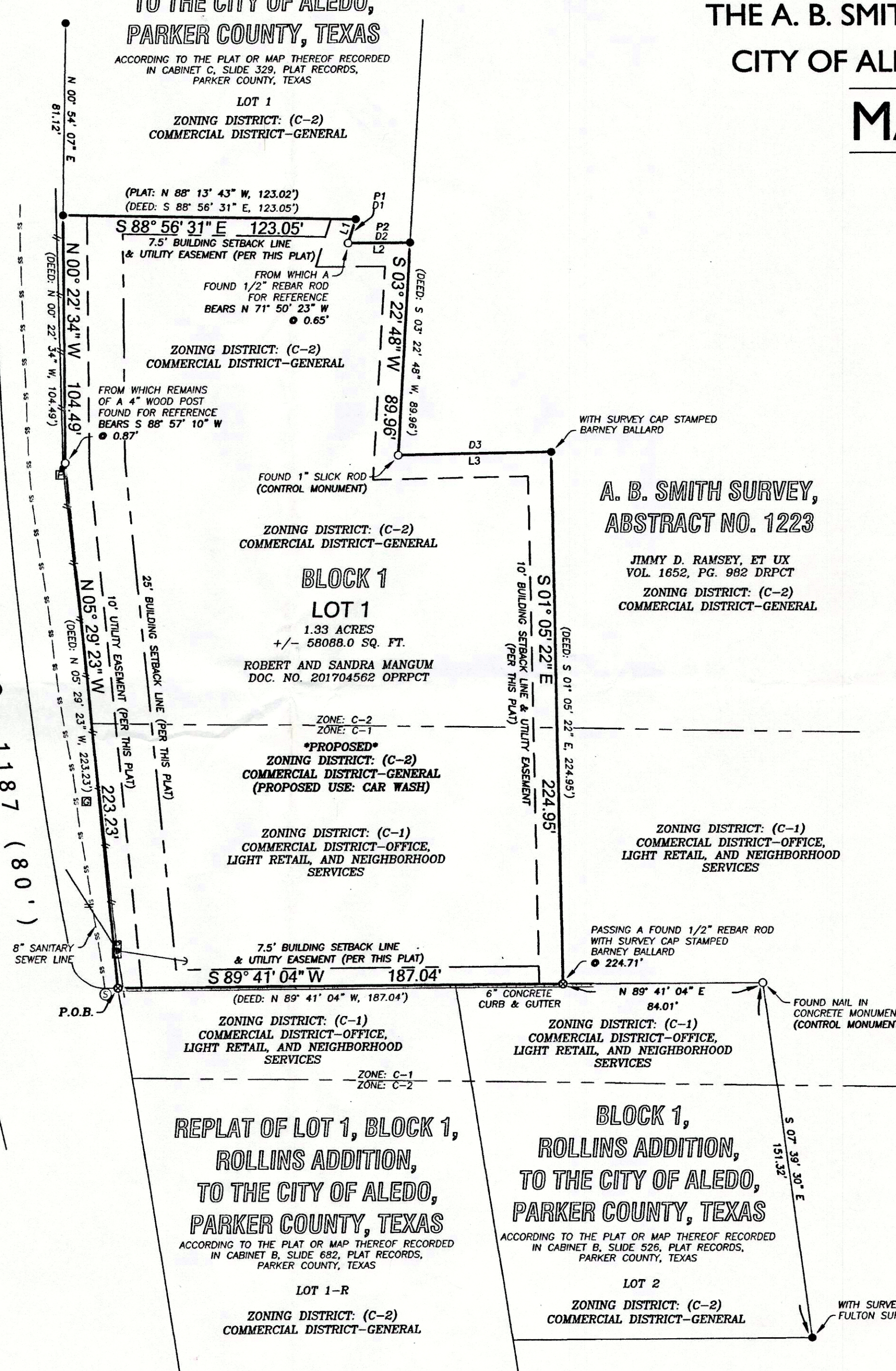
201714736 PLAT Total Pages: 1

MANGUM ADDITION

A 1.33 ACRE TRACT OF LAND SITUATED WITHIN THE A. B. SMITH SURVEY, ABSTRACT NO. 1223, CITY OF ALEDO, PARKER COUNTY, TEXAS

MARCH 2017

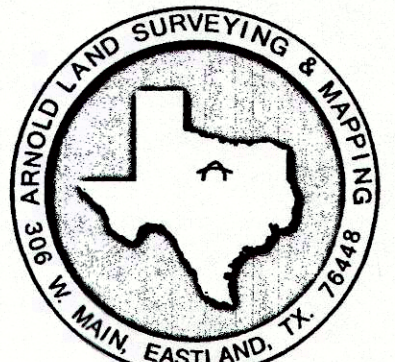
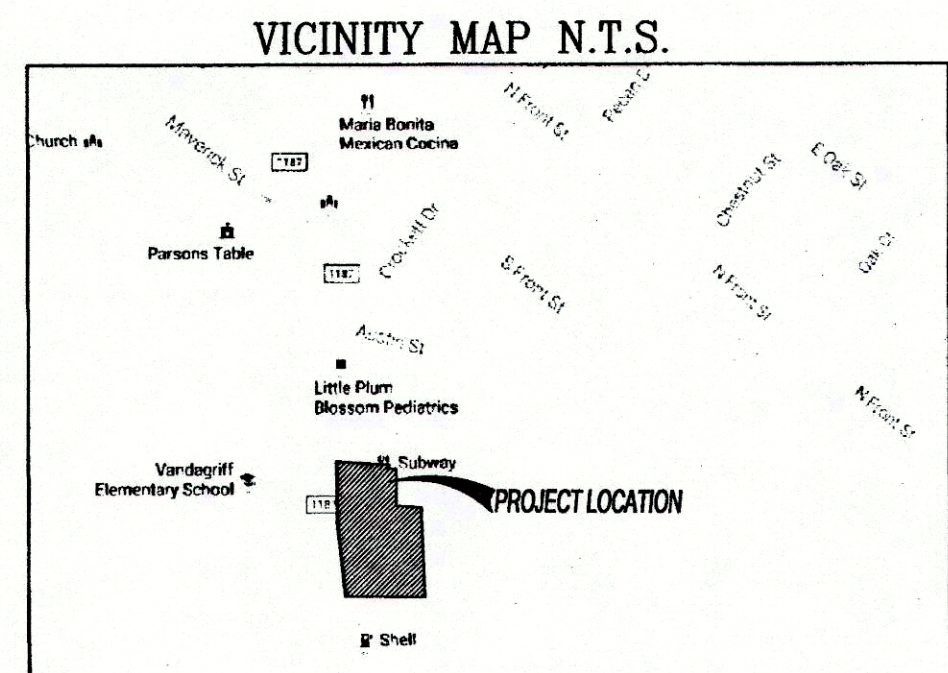
FARM TO MARKET ROAD NO. 1187 (80')



ACCT. NO: 14853
SCH. DIST: AL
CITY: M-18
MAP NO:

LEGEND

- ✂ CUT "X" IN CONCRETE
- ⊕ FOUND 1/2" REBAR ROD (CONTROL MONUMENT); UNLESS OTHERWISE NOTED HEREON SKETCH SET 1/2" REBAR ROD WITH SURVEY CAP STAMPED A.L.S. 6224 6332; UNLESS OTHERWISE NOTED HEREON SKETCH
- ⊙ SANITARY SEWER LID
- ⊠ CABLE PEDESTAL
- ⊡ GAS PIPELINE MARKER
- UTILITY POLE
- ⊞ TELEPHONE PEDESTAL
- DOWN GUY
- OVERHEAD UTILITY LINE
- - - BUILDING LINE
- - - EASEMENT LINE
- - - DESCRIBED TRACT



OFFICE: (254) 629-8550 FAX: (254) 629-8524
EMAIL: danny.arnold@surveying.com
TSPS FIRM NO. 101885-00
RLS GF# NONE JOB# 2016-284



21223.007.000.00
21223.011.000.00
D-734